

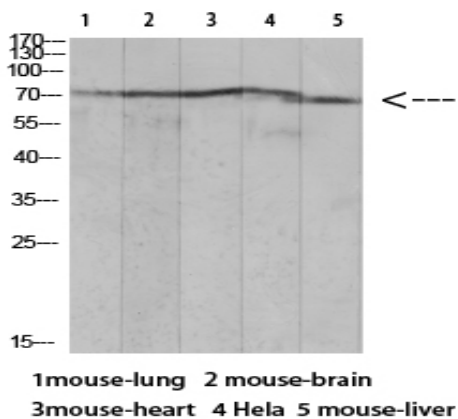
**Ku-70 (Acetyl Lys317) Polyclonal Antibody**

<b>Catalog No :</b>	YK0083
<b>Reactivity :</b>	Human;Rat;Mouse
<b>Applications :</b>	WB;ELISA;IHC
<b>Target :</b>	Ku70/XRCC6
<b>Fields :</b>	>>Non-homologous end-joining
<b>Gene Name :</b>	XRCC6 G22P1
<b>Protein Name :</b>	X-ray repair cross-complementing protein 6 (EC 3.6.4.-) (EC 4.2.99.-) (5'-deoxyribose-5-phosphate lyase Ku70) (5'-dRP lyase Ku70) (70 kDa subunit of Ku antigen) (ATP-dependent DNA helicase 2 subunit 1)
<b>Human Gene Id :</b>	2547
<b>Human Swiss Prot No :</b>	P12956
<b>Mouse Swiss Prot No :</b>	P23475
<b>Immunogen :</b>	Synthetic Acetyl peptide from human protein at AA range: 317
<b>Specificity :</b>	The antibody detects endogenous Ku-70 when Acetyl occurs at Lys317
<b>Formulation :</b>	Liquid in PBS containing 50% glycerol, 0.5% BSA and 0.02% sodium azide.
<b>Source :</b>	Polyclonal, Rabbit,IgG
<b>Dilution :</b>	WB 1:500-2000;IHC 1:50-300; ELISA 2000-20000
<b>Purification :</b>	The antibody was affinity-purified from rabbit antiserum by affinity-chromatography using epitope-specific immunogen.
<b>Concentration :</b>	1 mg/ml
<b>Storage Stability :</b>	-15°C to -25°C/1 year(Do not lower than -25°C)

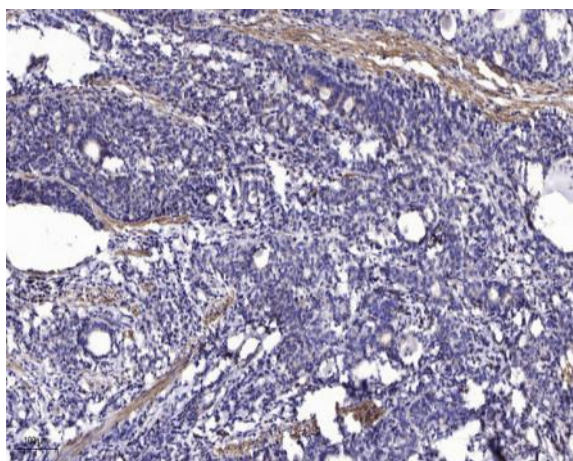
<b>Observed Band :</b>	69kD
<b>Cell Pathway :</b>	Non-homologous end-joining;
<b>Background :</b>	<p>The p70/p80 autoantigen is a nuclear complex consisting of two subunits with molecular masses of approximately 70 and 80 kDa. The complex functions as a single-stranded DNA-dependent ATP-dependent helicase. The complex may be involved in the repair of nonhomologous DNA ends such as that required for double-strand break repair, transposition, and V(D)J recombination. High levels of autoantibodies to p70 and p80 have been found in some patients with systemic lupus erythematosus. [provided by RefSeq, Jul 2008],</p>
<b>Function :</b>	<p>developmental stage:Expression does not increase during promyelocyte differentiation.,disease:Individuals with systemic lupus erythematosus (SLE) and related disorders produce extremely large amounts of autoantibodies to p70 and p86. Existence of a major autoantigenic epitope or epitopes on the C-terminal 190 amino acids of p70 containing the leucine repeat. The majority of autoantibodies to p70 in most sera from patients with SLE seem to be reactive with this region.,function:Single stranded DNA-dependent ATP-dependent helicase. Has a role in chromosome translocation. The DNA helicase II complex binds preferentially to fork-like ends of double-stranded DNA in a cell cycle-dependent manner. It works in the 3'-5' direction. Binding to DNA may be mediated by p70. Involved in DNA nonhomologous end joining (NHEJ) required for double-strand break repair and V(D)J recombination. The Ku p70/p86</p>
<b>Subcellular Location :</b>	Nucleus . Chromosome .
<b>Expression :</b>	Brain,Cervix carcinoma,Epithelium,Heart,Hepatocyte,Kidney,Liver,Lun
<b>Tag :</b>	orthogonal
<b>Sort :</b>	9021
<b>No4 :</b>	1
<b>Host :</b>	Rabbit
<b>Modifications :</b>	Acetyl

---

## Products Images



Western blot analysis of mouse-lung lysate, antibody was diluted at 1000. Secondary antibody(catalog#:RS0002) was diluted at 1:20000



Immunohistochemical analysis of paraffin-embedded human Gastric adenocarcinoma. 1, Antibody was diluted at 1:200(4° overnight). 2, Tris-EDTA,pH9.0 was used for antigen retrieval. 3,Secondary antibody was diluted at 1:200(room temperature, 45min).