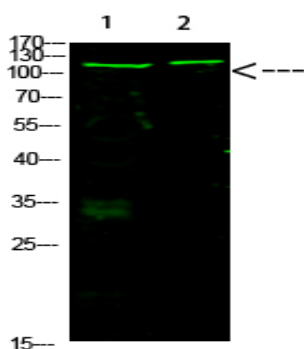


Rb (Acetyl-K873/K874) Polyclonal Antibody

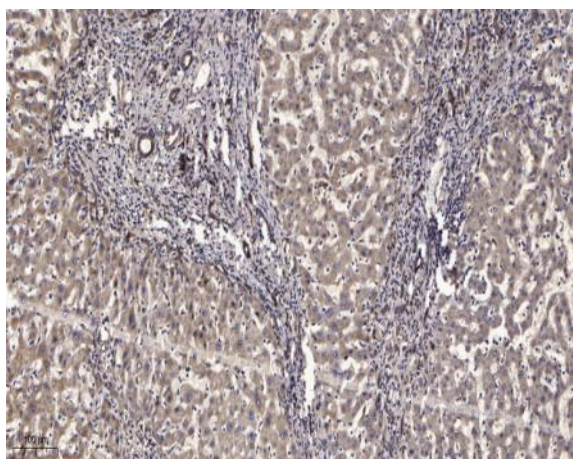
Catalog No :	YK0092
Reactivity :	Human:K873+K874;Mouse:K866+K867;Rat:K865+K866
Applications :	WB;IHC
Target :	Rb
Fields :	>>Endocrine resistance;>>Cell cycle;>>Cellular senescence;>>Cushing syndrome;>>Hepatitis C;>>Hepatitis B;>>Human cytomegalovirus infection;>>Human papillomavirus infection;>>Human T-cell leukemia virus 1 infection;>>Kaposi sarcoma-associated herpesvirus infection;>>Epstein-Barr virus infection;>>Pathways in cancer;>>Viral carcinogenesis;>>Chemical carcinogenesis - receptor activation;>>Pancreatic cancer;>>Glioma;>>Prostate cancer;>>Melanoma;>>Bladder cancer;>>Chronic myeloid leukemia;>>Small cell lung cancer;>>Non-small cell lung cancer;>>Breast cancer;>>Hepatocellular carcinoma;>>Gastric cancer
Gene Name :	RB1
Protein Name :	Rb
Human Gene Id :	5925
Human Swiss Prot No :	P06400
Mouse Swiss Prot No :	P13405
Immunogen :	Synthesized Acetyl peptide derived from human Rb. at AA range: K873/872
Specificity :	This antibody detects endogenous levels of Rb at Human:K873+K874;Mouse:K866+K867;Rat:K865+K866, It doesn't react with total protein.
Formulation :	Liquid in PBS containing 50% glycerol, 0.5% BSA and 0.02% sodium azide.
Source :	Polyclonal, Rabbit,IgG
Dilution :	WB 1:500-2000;IHC 1:50-300

Purification :	The antibody was affinity-purified from rabbit antiserum by affinity-chromatography using epitope-specific immunogen.
Concentration :	1 mg/ml
Storage Stability :	-15°C to -25°C/1 year(Do not lower than -25°C)
Molecularweight :	106kD
Cell Pathway :	Cell_Cycle_G1S;Cell_Cycle_G2M_DNA;Pathways in cancer;Pancreatic cancer;Glioma;Prostate cancer;Melanoma;Bladder cancer;Chronic myeloid leukemia;Small cell lung cancer;Non-small cell lung cancer;
Background :	The protein encoded by this gene is a negative regulator of the cell cycle and was the first tumor suppressor gene found. The encoded protein also stabilizes constitutive heterochromatin to maintain the overall chromatin structure. The active, hypophosphorylated form of the protein binds transcription factor E2F1. Defects in this gene are a cause of childhood cancer retinoblastoma (RB), bladder cancer, and osteogenic sarcoma. [provided by RefSeq, Jul 2008],
Function :	disease:Defects in RB1 are a cause of bladder cancer [MIM:109800].,disease:Defects in RB1 are a cause of osteogenic sarcoma [MIM:259500].,disease:Defects in RB1 are the cause of childhood cancer retinoblastoma (RB) [MIM:180200]. RB is a congenital malignant tumor that arises from the nuclear layers of the retina. It occurs in about 1:20'000 live births and represents about 2% of childhood malignancies. It is bilateral in about 30% of cases. Although most RB appear sporadically, about 20% are transmitted as an autosomal dominant trait with incomplete penetrance. The diagnosis is usually made before the age of 2 years when strabismus or a gray to yellow reflex from pupil ("cat eye") is investigated.,function:Key regulator of entry into cell division that acts as a tumor suppressor. Acts as a transcription repressor of E2F1 target genes. The underphosphorylated, active form of RB1 interacts
Subcellular Location :	Nucleus . During keratinocyte differentiation, acetylation by KAT2B/PCAF is required for nuclear localization. .
Expression :	Expressed in the retina. Expressed in foreskin keratinocytes (at protein level) (PubMed:20940255).
Sort :	14019
No4 :	1
Host :	Rabbit
Modifications :	Acetyl

Products Images



Western Blot analysis of 1, mouse-heart 3, mouse-brain cells using primary antibody diluted at 1:1000 (4 °C overnight). Secondary antibody: Goat Anti-rabbit IgG IRDye 800 (diluted at 1:5000, 25 °C, 1 hour)



Immunohistochemical analysis of paraffin-embedded human liver cancer. 1, Antibody was diluted at 1:200 (4 °C overnight). 2, Tris-EDTA, pH 9.0 was used for antigen retrieval. 3, Secondary antibody was diluted at 1:200 (room temperature, 45 min).