

**Sp3 (Acetyl Lys551) rabbit pAb**

|                              |   |
|------------------------------|---|
| <b>Catalog No :</b>          | YK0170  |
| <b>Reactivity :</b>          | Human;Mouse   |
| <b>Applications :</b>        | WB;IHC  |
| <b>Target :</b>              | Sp3   |
| <b>Gene Name :</b>           | SP3   |
| <b>Protein Name :</b>        | Sp3 (Acetyl Lys551)   |
| <b>Human Gene Id :</b>       | 6670  |
| <b>Human Swiss Prot No :</b> | Q02447  |
| <b>Mouse Gene Id :</b>       | 20687   |
| <b>Mouse Swiss Prot No :</b> | O70494  |
| <b>Immunogen :</b>           | Synthesized peptide derived from human Sp3 (Acetyl Lys551)  |
| <b>Specificity :</b>         | This antibody detects endogenous levels of Human,Mouse Sp3 (Acetyl Lys551)                                |
| <b>Formulation :</b>         | Liquid in PBS containing 50% glycerol, 0.5% BSA and 0.02% sodium azide.                                   |
| <b>Source :</b>              | Polyclonal, Rabbit,IgG  |
| <b>Dilution :</b>            | WB 1:500-2000;IHC 1:50-300  |
| <b>Purification :</b>        | The antibody was affinity-purified from rabbit serum by affinity-chromatography using specific immunogen. |
| <b>Concentration :</b>       | 1 mg/ml   |
| <b>Storage Stability :</b>   | -15°C to -25°C/1 year(Do not lower than -25°C)  |

**Observed Band :** 85kD

---

**Background :** This gene belongs to a family of Sp1 related genes that encode transcription factors that regulate transcription by binding to consensus GC- and GT-box regulatory elements in target genes. This protein contains a zinc finger DNA-binding domain and several transactivation domains, and has been reported to function as a bifunctional transcription factor that either stimulates or represses the transcription of numerous genes. Transcript variants encoding different isoforms have been described for this gene, and one has been reported to initiate translation from a non-AUG (AUA) start codon. Additional isoforms, resulting from the use of alternate downstream translation initiation sites, have also been noted. A related pseudogene has been identified on chromosome 13. [provided by RefSeq, Feb 2010],

---

**Function :** function:Transcriptional factor that can act as an activator or repressor, probably in a isoform-specific manner. Binds to GT and GC boxes promoters elements.,similarity:Belongs to the Sp1 C2H2-type zinc-finger protein family.,similarity:Contains 3 C2H2-type zinc fingers.,tissue specificity:Ubiquitously expressed.,

---

**Subcellular Location :** Nucleus. Nucleus, PML body. Localizes to the nuclear periphery and in nuclear dots when sumoylated. Some localization in PML nuclear bodies.

---

**Expression :** Ubiquitously expressed.

---

**Sort :** 16532

---

**No4 :** 1

---

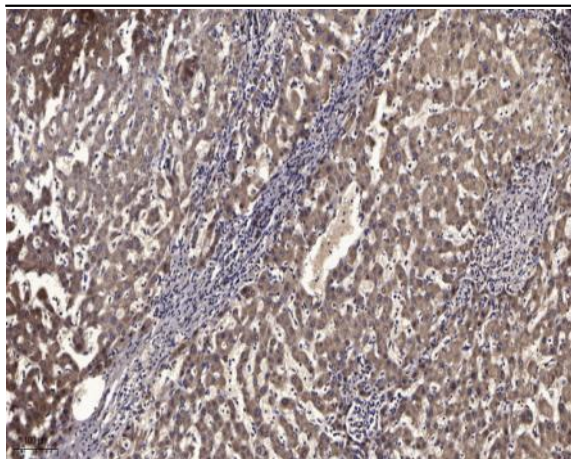
**Host :** Rabbit

---

**Modifications :** Acetyl

---

## Products Images



Immunohistochemical analysis of paraffin-embedded human liver cancer. 1, Antibody was diluted at 1:200(4° overnight). 2, Tris-EDTA,pH9.0 was used for antigen retrieval. 3,Secondary antibody was diluted at 1:200(room temperature, 45min).