

Histone H1 (Tri Methyl Lys25) Polyclonal Antibody

Catalog No :	YH0045
Reactivity :	Human
Applications :	WB
Target :	Histone H1
Gene Name :	HIST1H1A/HIST1H1C/HIST1H1D/HIST1H1E
Protein Name :	Histone H1.1/Histone H1.2/Histone H1.3/Histone H1.4
Human Gene Id :	3024/3006/3007/3008
Human Swiss Prot No :	Q02539/P16403/P16402/P10412
Mouse Gene Id :	80838/50708/14957/50709
Rat Gene Id :	291145/201097
Rat Swiss Prot No :	D4A3K5/P15865
Immunogen :	Synthetic Peptide of Histone H1 (Tri Methyl Lys25)
Specificity :	The antibody detects endogenous Histone H1 (Tri Methyl Lys25) protein.
Formulation :	PBS, pH 7.4, containing 0.5%BSA, 0.02% sodium azide as Preservative and 50% Glycerol.
Source :	Polyclonal, Rabbit,IgG
Dilution :	WB 1:1000-2000
Purification :	The antibody was affinity-purified from rabbit antiserum by affinity-chromatography using specific immunogen.
Storage Stability :	-15°C to -25°C/1 year(Do not lower than -25°C)

Observed Band : 17-25kD

Background : Histones are basic nuclear proteins responsible for nucleosome structure of the chromosomal fiber in eukaryotes. Two molecules of each of the four core histones (H2A, H2B, H3, and H4) form an octamer, around which approximately 146 bp of DNA is wrapped in repeating units, called nucleosomes. The linker histone, H1, interacts with linker DNA between nucleosomes and functions in the compaction of chromatin into higher order structures. This gene is intronless and encodes a replication-dependent histone that is a member of the histone H1 family. Transcripts from this gene lack polyA tails but instead contain a palindromic termination element. This gene is found in the large histone gene cluster on chromosome 6. [provided by RefSeq, Aug 2015],

Function : function:Histones H1 are necessary for the condensation of nucleosome chains into higher order structures.,similarity:Belongs to the histone H1/H5 family.,

Subcellular Location : Nucleus . Chromosome . Mainly localizes in euchromatin.

Expression : Placenta,

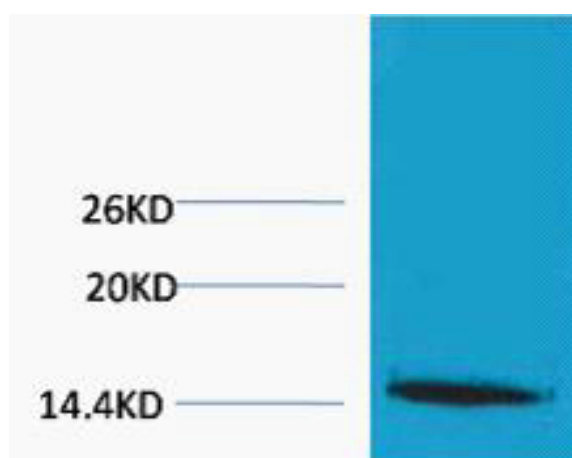
Sort : 7411

No4 : 1

Host : Rabbit

Modifications : Methyl

Products Images



Western blot analysis of extracts from HeLa cells, 1:2000.
Secondary antibody(catalog#:RS0002) was diluted at 1:20000