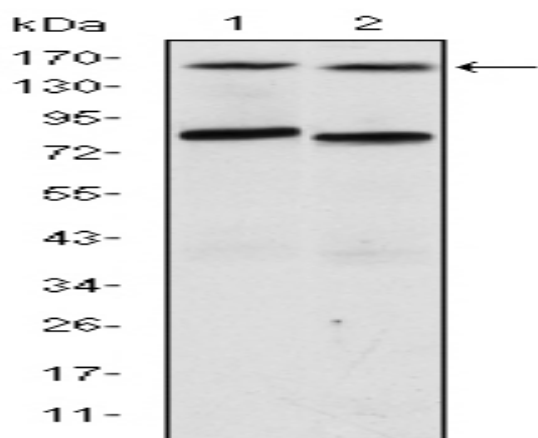


**ANIB1 Monoclonal Antibody**

|                            |   |
|----------------------------|---|
| <b>Catalog No :</b>        | YM0025  |
| <b>Reactivity :</b>        | Human   |
| <b>Applications :</b>      | WB;ELISA  |
| <b>Target :</b>            | ANIB1   |
| <b>Human Gene Id :</b>     | 116833  |
| <b>Immunogen :</b>         | Purified recombinant fragment of human ANIB1 expressed in E. Coli.            |
| <b>Specificity :</b>       | ANIB1 Monoclonal Antibody detects ANIB1 protein.                              |
| <b>Formulation :</b>       | Liquid in PBS containing 50% glycerol, 0.5% BSA and 0.02% sodium azide.       |
| <b>Source :</b>            | Monoclonal, Mouse   |
| <b>Dilution :</b>          | WB 1:500 - 1:2000. ELISA: 1:10000. Not yet tested in other applications.      |
| <b>Purification :</b>      | Affinity purification   |
| <b>Storage Stability :</b> | -15°C to -25°C/1 year(Do not lower than -25°C)                                |
| <b>P References :</b>      | 1. Clin Chem 2004, 50:996-1001.<br>2. Farnham JM, et al. Hum Genet, 2004 Feb. |
| <b>Sort :</b>              | 2032  |
| <b>No4 :</b>               | 1   |
| <b>Host :</b>              | Mouse   |
| <b>Modifications :</b>     | Unmodified  |

**Products Images**



Western Blot analysis using ANIB1 Monoclonal Antibody against T47D (1) and MCF-7 (2) cell lysate.

