

ApoL1 Monoclonal Antibody

Catalog No :	YM0038
Reactivity :	Human
Applications :	WB;ELISA
Target :	ApoL1
Fields :	>>African trypanosomiasis
Gene Name :	APOL1
Protein Name :	Apolipoprotein L1
Human Gene Id :	8542
Human Swiss Prot No :	O14791
Immunogen :	Purified recombinant fragment of ApoL1 expressed in E. Coli.
Specificity :	ApoL1 Monoclonal Antibody detects endogenous levels of ApoL1 protein.
Formulation :	Liquid in PBS containing 50% glycerol, 0.5% BSA and 0.02% sodium azide.
Source :	Polyclonal, Mouse
Dilution :	WB 1:500 - 1:2000. ELISA: 1:10000. Not yet tested in other applications.
Purification :	Affinity purification
Storage Stability :	-15°C to -25°C/1 year(Do not lower than -25°C)
Molecularweight :	44kD
P References :	1. Proc Natl Acad Sci U S A. 2007 Mar 6;104(10):4118-23. 2. J Lipid Res. 2005 Mar;46(3):469-74.

Background : This gene encodes a secreted high density lipoprotein which binds to apolipoprotein A-I. Apolipoprotein A-I is a relatively abundant plasma protein and is the major apoprotein of HDL. It is involved in the formation of most cholesteryl esters in plasma and also promotes efflux of cholesterol from cells. This apolipoprotein L family member may play a role in lipid exchange and transport throughout the body, as well as in reverse cholesterol transport from peripheral cells to the liver. Several different transcript variants encoding different isoforms have been found for this gene. [provided by RefSeq, Nov 2008],

Function : function:May play a role in lipid exchange and transport throughout the body. May participate in reverse cholesterol transport from peripheral cells to the liver.,sequence caution:Translated as Gln.,similarity:Belongs to the apolipoprotein L family.,subunit:In plasma, interacts with APOA1 and mainly associated with large high density lipoprotein particles.,tissue specificity:Plasma. Found on APOA-I-containing high density lipoprotein (HDL3). Expressed in pancreas, lung, prostate, liver, placenta and spleen.,

Subcellular Location : Secreted.

Expression : Plasma. Found on APOA-I-containing high density lipoprotein (HDL3). Expressed in pancreas, lung, prostate, liver, placenta and spleen.

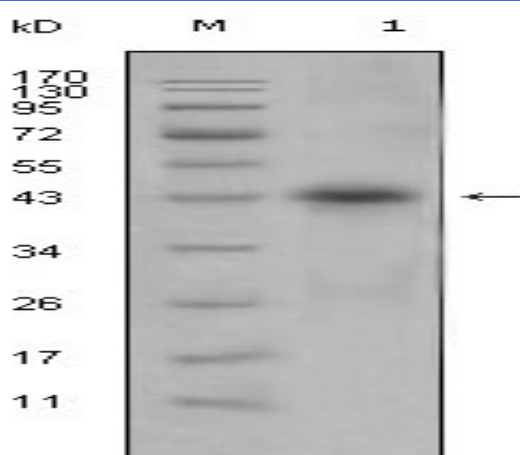
Sort : 2160

No4 : 1

Host : Mouse

Modifications : Unmodified

Products Images



Western Blot analysis using ApoL1 Monoclonal Antibody against human plasma (1).