

Bcl-10 Monoclonal Antibody

Catalog No :	YM0057
Reactivity :	Human;Mouse
Applications :	WB;IHC;IF;FCM;ELISA
Target :	Bcl-10
Fields :	>>NF-kappa B signaling pathway;>>C-type lectin receptor signaling pathway;>>T cell receptor signaling pathway;>>B cell receptor signaling pathway;>>Shigellosis;>>Tuberculosis
Gene Name :	BCL10
Protein Name :	B-cell lymphoma/leukemia 10
Human Gene Id :	8915
Human Swiss Prot No :	O95999
Mouse Gene Id :	12042
Mouse Swiss Prot No :	Q9Z0H7
Immunogen :	Purified recombinant fragment of human Bcl-10 expressed in E. Coli.
Specificity :	Bcl-10 Monoclonal Antibody detects endogenous levels of Bcl-10 protein.
Formulation :	Liquid in PBS containing 50% glycerol, 0.5% BSA and 0.02% sodium azide.
Source :	Monoclonal, Mouse
Dilution :	WB 1:500 - 1:2000. IHC 1:200 - 1:1000. IF 1:200 - 1:1000. Flow cytometry: 1:200 - 1:400. ELISA: 1:10000. Not yet tested in other applications.
Purification :	Affinity purification
Concentration :	1 mg/ml

Storage Stability : -15°C to -25°C/1 year(Do not lower than -25°C)

Molecularweight : 26kD

Cell Pathway : T_Cell_Receptor;B_Cell_Antigen;

P References : 1. Br J Cancer. 2006 May 22;94(10):1446-51.
2. Proc Natl Acad Sci U S A. 2006 Apr 11;103(15):5799-804.

Background : This gene was identified by its translocation in a case of mucosa-associated lymphoid tissue (MALT) lymphoma. The protein encoded by this gene contains a caspase recruitment domain (CARD), and has been shown to induce apoptosis and to activate NF-kappaB. This protein is reported to interact with other CARD domain containing proteins including CARD9, 10, 11 and 14, which are thought to function as upstream regulators in NF-kappaB signaling. This protein is found to form a complex with MALT1, a protein encoded by another gene known to be translocated in MALT lymphoma. MALT1 and this protein are thought to synergize in the activation of NF-kappaB, and the deregulation of either of them may contribute to the same pathogenetic process that leads to the malignancy. Alternative splicing results in multiple transcript variants. [provided by RefSeq, Mar 2016],

Function : disease:A chromosomal aberration involving BCL10 is recurrent in low-grade mucosa-associated lymphoid tissue (MALT lymphoma). Translocation t(1;14)(p22;q32). Although the BCL10/IgH translocation leaves the coding region of BCL10 intact, frequent BCL10 mutations could be attributed to the Ig somatic hypermutation mechanism resulting in nucleotide transitions.,disease:Defects in BCL10 are involved in various types of cancer.,function:Promotes apoptosis, pro-caspase-9 maturation and activation of NF-kappa-B via NIK and IKK. May be an adapter protein between upstream TNFR1-TRADD-RIP complex and the downstream NIK-IKK-IKAP complex. Is a substrate for MALT1.,PTM:Phosphorylated. Phosphorylation results in dissociation from TRAF2 and binding to BIRC2/c-IAP2.,similarity:Contains 1 CARD domain.,subcellular location:Appears to have a perinuclear, compact and filamentous pattern of expression. Also

Subcellular Location : Cytoplasm, perinuclear region . Membrane raft . Appears to have a perinuclear, compact and filamentous pattern of expression. Also found in the nucleus of several types of tumor cells. Colocalized with DPP4 in membrane rafts. .

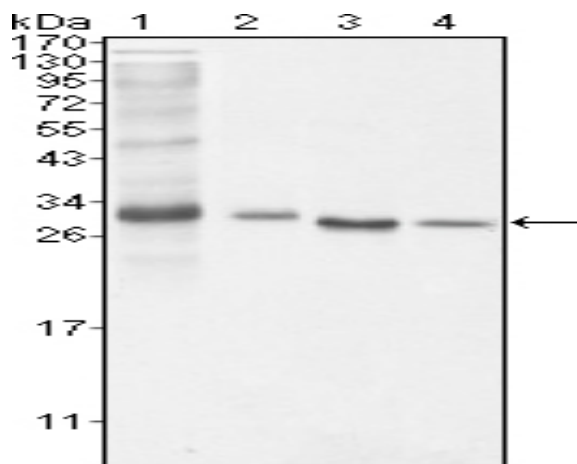
Expression : Ubiquitous.

Sort : 2613

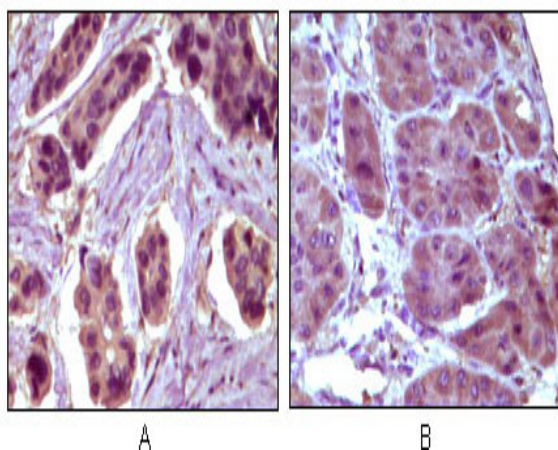
No4 : 1

Mouse

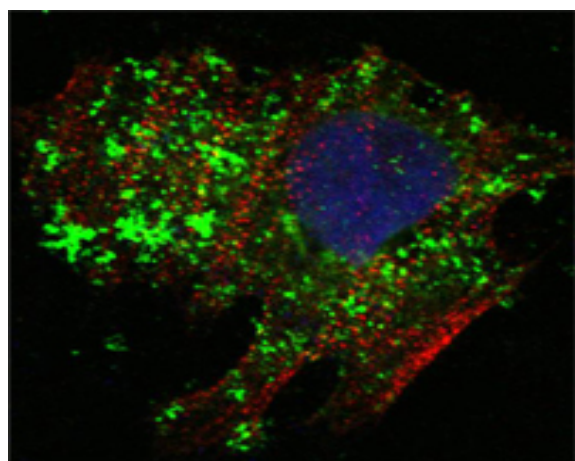
Products Images



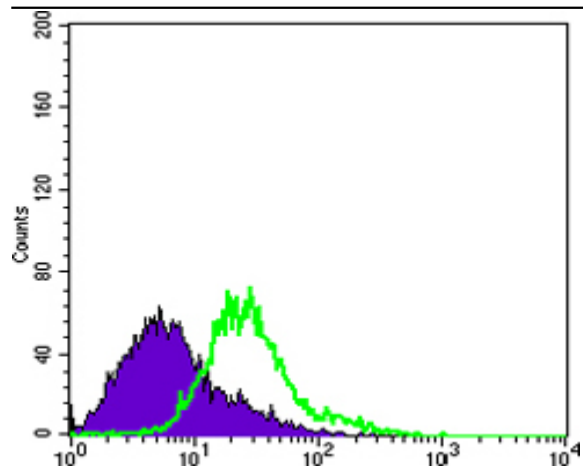
Western Blot analysis using Bcl-10 Monoclonal Antibody against NIH/3T3 (1), HeLa (2), MCF-7 (3) and Jurkat (4) cell lysate.



Immunohistochemistry analysis of paraffin-embedded human breast carcinoma (A) and liver carcinoma (B), showing cytoplasmic localization with DAB staining using Bcl-10 Monoclonal Antibody.



Confocal immunofluorescence analysis of HeLa cells using Bcl-10 Monoclonal Antibody (green). Red: Actin filaments have been labeled with Alexa Fluor-555 phalloidin. Blue: DRAQ5 fluorescent DNA dye.



Flow cytometric analysis of HeLa cells using Bcl-10 Monoclonal Antibody (green) and negative control (purple).