

Blk Monoclonal Antibody

Catalog No :	YM0067
Reactivity :	Human
Applications :	WB;IF;FCM;ELISA
Target :	BLK
Gene Name :	BLK
Protein Name :	Tyrosine-protein kinase Blk
Human Gene Id :	640
Human Swiss Prot No :	P51451
Mouse Swiss Prot No :	P16277
Immunogen :	Purified recombinant fragment of human Blk expressed in E. Coli.
Specificity :	Blk Monoclonal Antibody detects endogenous levels of Blk protein.
Formulation :	Liquid in PBS containing 50% glycerol, 0.5% BSA and 0.02% sodium azide.
Source :	Monoclonal, Mouse
Dilution :	WB 1:500 - 1:2000. IF 1:200 - 1:1000. Flow cytometry: 1:200 - 1:400. ELISA: 1:10000. Not yet tested in other applications.
Purification :	Affinity purification
Storage Stability :	-15°C to -25°C/1 year(Do not lower than -25°C)
Molecularweight :	58kD
P References :	1. N Engl J Med. 2008 Feb 28;358(9):900-9. 2. Genes Immun. 2009 Apr;10(3):219-26. 3. Proc Natl Acad Sci U S A. 2009 Aug 25;106(34):14460-5.

Background : This gene encodes a nonreceptor tyrosine-kinase of the src family of proto-oncogenes that are typically involved in cell proliferation and differentiation. The protein has a role in B-cell receptor signaling and B-cell development. The protein also stimulates insulin synthesis and secretion in response to glucose and enhances the expression of several pancreatic beta-cell transcription factors. [provided by RefSeq, Aug 2010],

Function : catalytic activity:ATP + a [protein]-L-tyrosine = ADP + a [protein]-L-tyrosine phosphate.,function:May function in a signal transduction pathway that is restricted to B-lymphoid cells.,similarity:Belongs to the protein kinase superfamily. Tyr protein kinase family. SRC subfamily.,similarity:Contains 1 protein kinase domain.,similarity:Contains 1 SH2 domain.,similarity:Contains 1 SH3 domain.,

Subcellular Location : Cell membrane ; Lipid-anchor . Present and active in lipid rafts. Membrane location is required for the phosphorylation of CD79A and CD79B (By similarity). .

Expression : Expressed in lymphatic organs, pancreatic islets, Leydig cells, striate ducts of salivary glands and hair follicles.

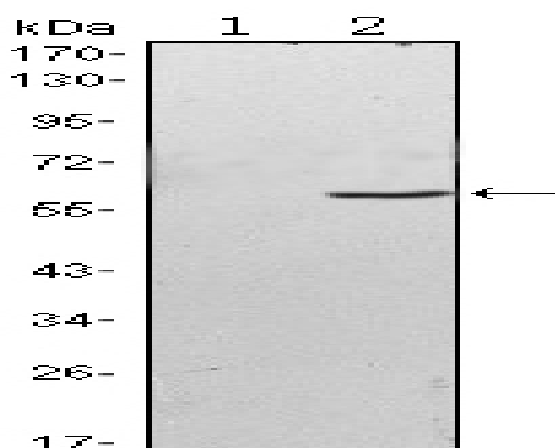
Sort : 2770

No4 : 1

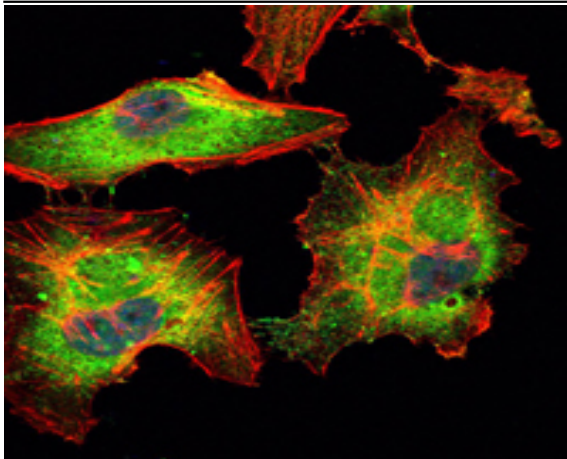
Host : Mouse

Modifications : Unmodified

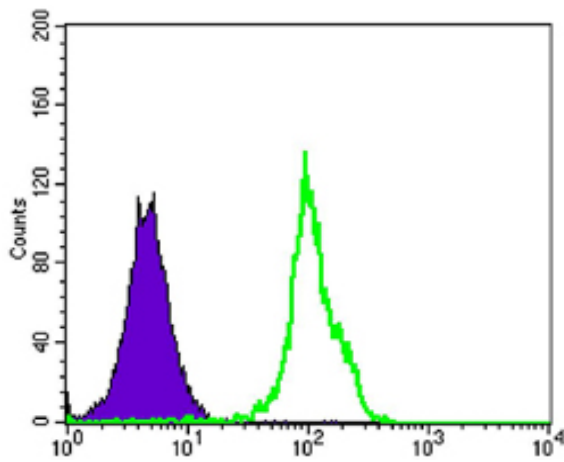
Products Images



Western Blot analysis using Blk Monoclonal Antibody against HEK293 (1) and BLK-hlgFc transfected HEK293 (2) cell lysate.



Immunofluorescence analysis of HeLa cells using Blk Monoclonal Antibody (green). Blue: DRAQ5 fluorescent DNA dye. Red: Actin filaments have been labeled with Alexa Fluor-555 phalloidin.



Flow cytometric analysis of HL-60 cells using Blk Monoclonal Antibody (green) and negative control (purple).