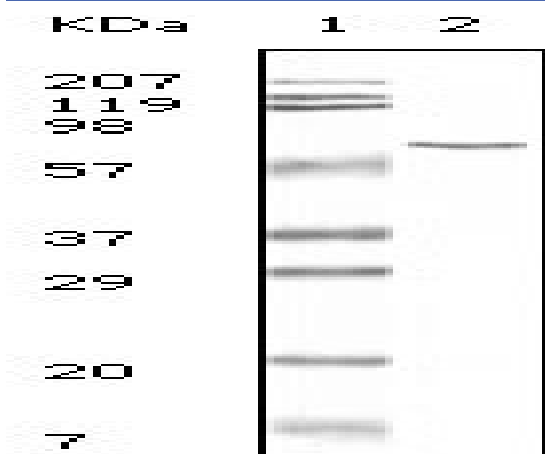


BSA Monoclonal Antibody

Catalog No :	YM0082
Reactivity :	Bovine
Applications :	WB;ELISA
Target :	BSA
Immunogen :	Bovine serum albumin.
Specificity :	BSA Monoclonal Antibody detects BSA protein.
Formulation :	Liquid in PBS containing 50% glycerol, 0.5% BSA and 0.02% sodium azide.
Source :	Monoclonal, Mouse
Dilution :	WB 1:500 - 1:2000. ELISA: 1:10000. Not yet tested in other applications.
Purification :	Affinity purification
Concentration :	1 mg/ml
Storage Stability :	-15°C to -25°C/1 year(Do not lower than -25°C)
P References :	1. Clin Chem 1997,43 (7): 1142-1150. 2. Science 1994.263: 1625-1629. 3. Nature 1994.367: 417-418.
Sort :	2882
No4 :	1
Host :	Mouse
Modifications :	Unmodified

Products Images



Western Blot analysis using BSA Monoclonal Antibody against BSA.