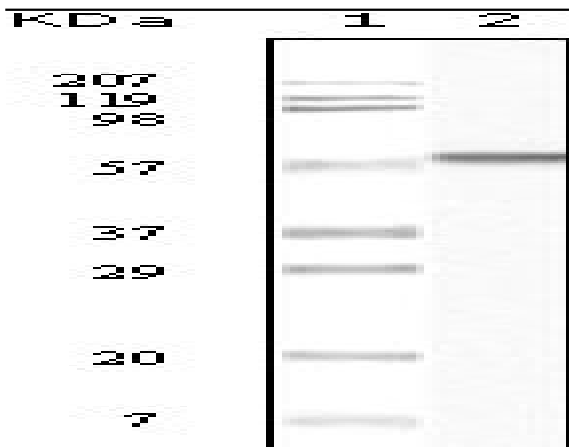


Casein Kinase I α Monoclonal Antibody

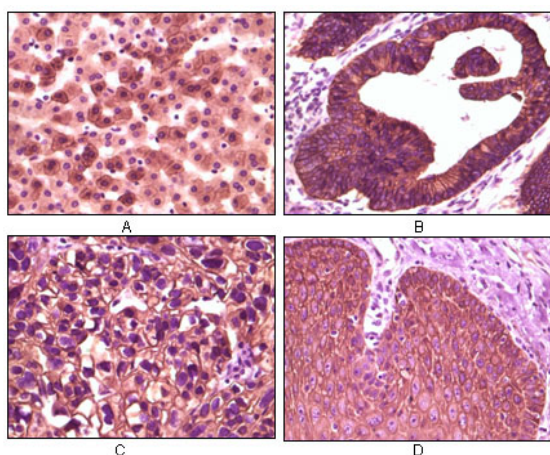
Catalog No :	YM0092
Reactivity :	Human
Applications :	WB;IHC;IF;ELISA
Target :	Casein Kinase I α
Fields :	>>Wnt signaling pathway;>>Hedgehog signaling pathway;>>Alzheimer disease;>>Pathways of neurodegeneration - multiple diseases;>>Human papillomavirus infection;>>Breast cancer;>>Hepatocellular carcinoma;>>Gastric cancer
Gene Name :	CSNK1A1
Protein Name :	Casein kinase I isoform alpha
Human Gene Id :	1452
Human Swiss Prot No :	P48729
Mouse Swiss Prot No :	Q8BK63
Immunogen :	Purified recombinant fragment of Casein Kinase I α expressed in E. Coli.
Specificity :	Casein Kinase I α Monoclonal Antibody detects endogenous levels of Casein Kinase I α protein.
Formulation :	Liquid in PBS containing 50% glycerol, 0.5% BSA and 0.02% sodium azide.
Source :	Monoclonal, Mouse
Dilution :	WB 1:500 - 1:2000. IHC 1:200 - 1:1000. ELISA: 1:10000.. IF 1:50-200
Purification :	Affinity purification
Storage Stability :	-15°C to -25°C/1 year(Do not lower than -25°C)

Molecularweight :	39kD
Cell Pathway :	WNT;WNT-T CELLHedgehog;
P References :	1. Ricardo G. Espinola, Robin A. Pixley, Berhane Ghebrehiwet. Blood (ASH Annual Meeting Abstracts), Nov 2005; 106: 2666.
Background :	<p>catalytic activity:ATP + a protein = ADP + a phosphoprotein.,function:Casein kinases are operationally defined by their preferential utilization of acidic proteins such as caseins as substrates. It can phosphorylate a large number of proteins. Participates in Wnt signaling. Phosphorylates CTNNB1 on 'Ser-45'.,similarity:Belongs to the protein kinase superfamily.,similarity:Belongs to the protein kinase superfamily. CK1 Ser/Thr protein kinase family. Casein kinase I subfamily.,similarity:Contains 1 protein kinase domain.,subunit:Monomer. Interacts with the Axin complex.,</p>
Function :	<p>catalytic activity:ATP + a protein = ADP + a phosphoprotein.,function:Casein kinases are operationally defined by their preferential utilization of acidic proteins such as caseins as substrates. It can phosphorylate a large number of proteins. Participates in Wnt signaling. Phosphorylates CTNNB1 on 'Ser-45'.,similarity:Belongs to the protein kinase superfamily.,similarity:Belongs to the protein kinase superfamily. CK1 Ser/Thr protein kinase family. Casein kinase I subfamily.,similarity:Contains 1 protein kinase domain.,subunit:Monomer. Interacts with the Axin complex.,</p>
Subcellular Location :	<p>Cytoplasm . Cytoplasm, cytoskeleton, microtubule organizing center, centrosome . Chromosome, centromere, kinetochore . Nucleus speckle . Cytoplasm, cytoskeleton, cilium basal body . Cytoplasm, cytoskeleton, spindle . Localizes to the centrosome in interphase cells, and to kinetochore fibers during mitosis. Also recruited to the keratin cytoskeleton (PubMed:23902688). .</p>
Expression :	Brain,Epithelium,Liver,Lung,Placenta,Skin,
Sort :	3136
No4 :	1
Host :	Mouse
Modifications :	Unmodified

Products Images



Western Blot analysis using Casein Kinase Ia Monoclonal Antibody against truncated CK1 recombinant protein.



Immunohistochemistry analysis of paraffin-embedded human liver tissue (A), colon carcinoma (B), lung carcinoma (C) and esophagus tissue (D), showing membrane localization with DAB staining using Casein Kinase Ia Monoclonal Antibody.