

## CD18 Monoclonal Antibody

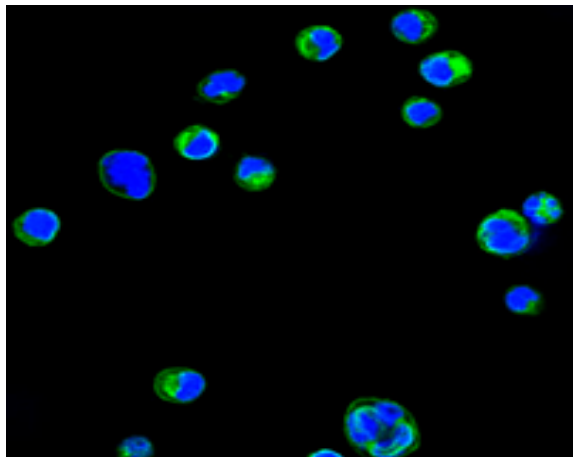
<b>Catalog No :</b>	YM0107
<b>Reactivity :</b>	Human;Mouse
<b>Applications :</b>	IF;ELISA
<b>Target :</b>	Integrin $\beta$ 2
<b>Fields :</b>	>>Rap1 signaling pathway;>>Phagosome;>>Hippo signaling pathway;>>Cell adhesion molecules;>>Complement and coagulation cascades;>>Neutrophil extracellular trap formation;>>Natural killer cell mediated cytotoxicity;>>Leukocyte transendothelial migration;>>Regulation of actin cytoskeleton;>>Pertussis;>>Legionellosis;>>Leishmaniasis;>>Malaria;>>Amoebiasis;>>Staphylococcus aureus infection;>>Tuberculosis;>>Human T-cell leukemia virus 1 infection;>>Rheumatoid arthritis;>>Viral myocarditis
<b>Gene Name :</b>	ITGB2
<b>Protein Name :</b>	Integrin beta-2
<b>Human Gene Id :</b>	3689
<b>Human Swiss Prot No :</b>	P05107
<b>Mouse Gene Id :</b>	16414
<b>Mouse Swiss Prot No :</b>	P11835
<b>Immunogen :</b>	Purified recombinant fragment of CD18 expressed in E. Coli.
<b>Specificity :</b>	CD18 Monoclonal Antibody detects endogenous levels of CD18 protein.
<b>Formulation :</b>	Liquid in PBS containing 50% glycerol, 0.5% BSA and 0.02% sodium azide.
<b>Source :</b>	Monoclonal, Mouse
<b>Dilution :</b>	IF 1:200 - 1:1000. ELISA: 1:10000. Not yet tested in other applications.

<b>Purification :</b>	Affinity purification
<b>Storage Stability :</b>	-15°C to -25°C/1 year(Do not lower than -25°C)
<b>Cell Pathway :</b>	Cell adhesion molecules (CAMs);Natural killer cell mediated cytotoxicity;Leukocyte transendothelial migration;Regulates Actin and Cytoskeleton;Viral myocarditis;
<b>P References :</b>	<ol style="list-style-type: none"><li>1. Microcirculation. 2008 Aug;15(6):555-67.</li><li>2. Mol Immunol. 2008 Feb;45(3):709-18.</li><li>3. J Biol Chem. 2007 Aug 17;282(33):24310-9.</li></ol>
<b>Background :</b>	This gene encodes an integrin beta chain, which combines with multiple different alpha chains to form different integrin heterodimers. Integrins are integral cell-surface proteins that participate in cell adhesion as well as cell-surface mediated signalling. The encoded protein plays an important role in immune response and defects in this gene cause leukocyte adhesion deficiency. Alternative splicing results in multiple transcript variants. [provided by RefSeq, Dec 2014],
<b>Function :</b>	disease:Defects in ITGB2 are the cause of leukocyte adhesion deficiency type I (LAD1) [MIM:116920]. LAD1 patients have recurrent bacterial infections and their leukocytes are deficient in a wide range of adhesion-dependent functions.,function:Integrin alpha-L/beta-2 is a receptor for ICAM1, ICAM2, ICAM3 and ICAM4. Integrins alpha-M/beta-2 and alpha-X/beta-2 are receptors for the iC3b fragment of the third complement component and for fibrinogen. Integrin alpha-X/beta-2 recognizes the sequence G-P-R in fibrinogen alpha-chain. Integrin alpha-M/beta-2 recognizes P1 and P2 peptides of fibrinogen gamma chain. Integrin alpha-M/beta-2 is also a receptor for factor X. Integrin alpha-D/beta-2 is a receptor for ICAM3 and VCAM1.,online information:ITGB2 mutation db,PTM:Both Ser-745 and Ser-756 become phosphorylated when T-cells are exposed to phorbol esters. Phosphorylation on Thr-758 (but not on S
<b>Subcellular Location :</b>	Cell membrane ; Single-pass type I membrane protein . Membrane raft ; Single-pass type I membrane protein .
<b>Expression :</b>	Leukocytes (PubMed:23775590). Expressed in neutrophils (at protein level) (PubMed:21193407, PubMed:28807980).
<b>Tag :</b>	hot
<b>Sort :</b>	3430
<b>No4 :</b>	1
<b>Host :</b>	Mouse

**Modifications :** Unmodified

---

## Products Images



Confocal immunofluorescence analysis of HL60 cells using CD18 Monoclonal Antibody (green). Blue: DRAQ5 fluorescent DNA dye.