

## CD20 Monoclonal Antibody

<b>Catalog No :</b>	YM0112
<b>Reactivity :</b>	Human
<b>Applications :</b>	IHC;IF;ELISA
<b>Target :</b>	CD20
<b>Fields :</b>	>>Hematopoietic cell lineage
<b>Gene Name :</b>	MS4A1
<b>Protein Name :</b>	B-lymphocyte antigen CD20
<b>Human Gene Id :</b>	931
<b>Human Swiss Prot No :</b>	P11836
<b>Mouse Swiss Prot No :</b>	P19437
<b>Immunogen :</b>	Synthetic peptide corresponding to aa (EPANPSEKNSPSTQY) of human CD20, conjugated to KLH.
<b>Specificity :</b>	CD20 Monoclonal Antibody detects endogenous levels of CD20 protein.
<b>Formulation :</b>	Liquid in PBS containing 50% glycerol, 0.5% BSA and 0.02% sodium azide.
<b>Source :</b>	Monoclonal, Mouse
<b>Dilution :</b>	IHC 1:200 - 1:1000. IF 1:200 - 1:1000. ELISA: 1:10000. Not yet tested in other applications.
<b>Purification :</b>	Affinity purification
<b>Storage Stability :</b>	-15°C to -25°C/1 year(Do not lower than -25°C)
<b>Cell Pathway :</b>	Hematopoietic cell lineage;

**P References :** 1. Byar K. Semin Oncol Nurs. 2004, Feb, 20 (1 Suppl 1):20-5. Review.  
2. Reiners KS. Hansen HP. Krüssmann A. et al. Immunology. 2004, Jun, 112(2):228-36.

---

**Background :** This gene encodes a member of the membrane-spanning 4A gene family. Members of this nascent protein family are characterized by common structural features and similar intron/exon splice boundaries and display unique expression patterns among hematopoietic cells and nonlymphoid tissues. This gene encodes a B-lymphocyte surface molecule which plays a role in the development and differentiation of B-cells into plasma cells. This family member is localized to 11q12, among a cluster of family members. Alternative splicing of this gene results in two transcript variants which encode the same protein. [provided by RefSeq, Jul 2008],

---

**Function :** caution:Epitope 1, mapped in PubMed:16785532, is predicted to be buried in the membrane. Its accessibility to the extracellular space, and thus to antibody recognition, is not explained.,function:This protein may be involved in the regulation of B-cell activation and proliferation.,online information:CD20 entry,pharmaceutical:Monoclonal antibodies(mAb) against CD20 are used to treat B-cell non-Hodgkin's lymphoma (NHL). These antibodies include Rituximab (Mabthera), Britumomab (Zevalin) and Tositumomab (Bexxar). CD20 engaged by mAb can generate transmembrane signals capable of directly controlling cell growth and triggering cell death in certain tumors. Alternatively, mAb can mediate complement-dependent cytotoxicity.,PTM:Phosphorylated. Might be functionally regulated by protein kinase(s).,similarity:Belongs to the MS4A family.,tissue specificity:Expressed on B-cells.,

---

**Subcellular Location :** Cell membrane ; Multi-pass membrane protein . Cell membrane ; Lipid-anchor . Constitutively associated with membrane rafts. .

---

**Expression :** Expressed on B-cells.

---

**Sort :** 3445

---

**No4 :** 1

---

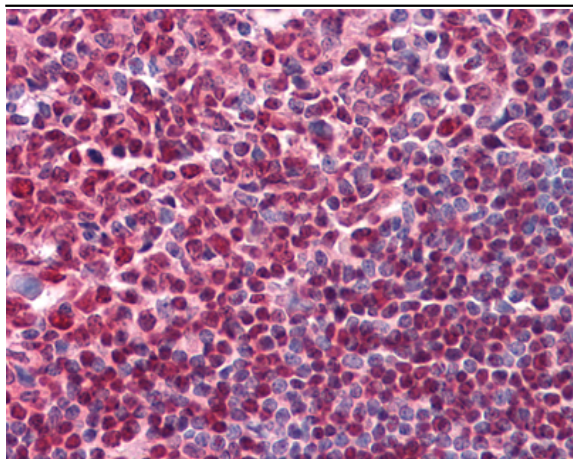
**Host :** Mouse

---

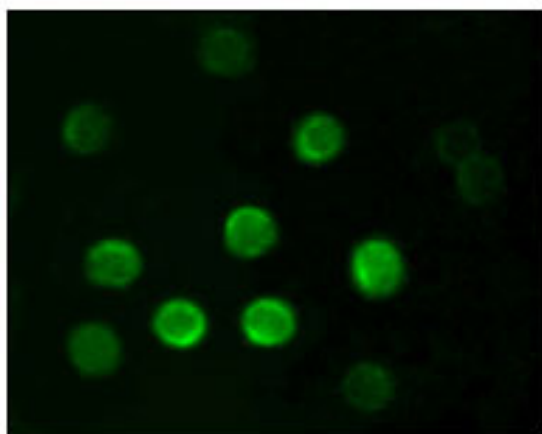
**Modifications :** Unmodified

---

**Products Images**



Immunohistochemistry analysis of paraffin-embedded human Tonsil tissues with AEC staining using CD20 Monoclonal Antibody.



Immunofluorescence analysis of B lymphocytes using CD20 Monoclonal Antibody.