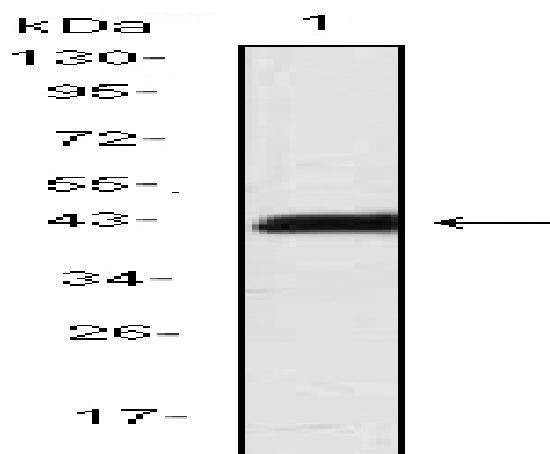


CD247 Monoclonal Antibody(4B10)

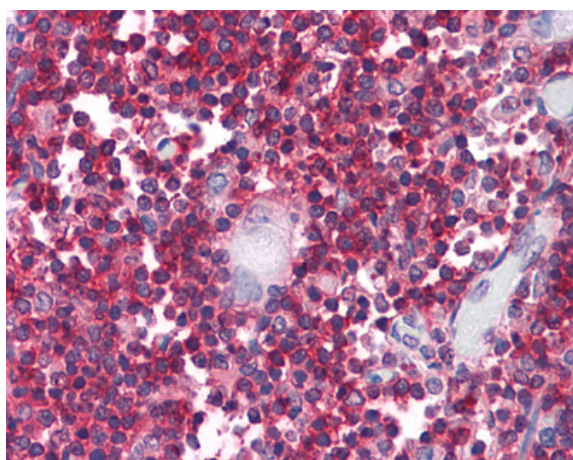
| | |
|------------------------------|--|
| Catalog No : | YM0114 |
| Reactivity : | Human |
| Applications : | WB;IHC;IF;FCM;ELISA |
| Target : | CD247 |
| Fields : | >>Natural killer cell mediated cytotoxicity;>>Th1 and Th2 cell differentiation;>>Th17 cell differentiation;>>T cell receptor signaling pathway;>>Chagas disease;>>Epstein-Barr virus infection;>>Human immunodeficiency virus 1 infection;>>PD-L1 expression and PD-1 checkpoint pathway in cancer |
| Gene Name : | CD247 |
| Protein Name : | T-cell surface glycoprotein CD3 zeta chain |
| Human Gene Id : | 919 |
| Human Swiss Prot No : | P20963 |
| Mouse Swiss Prot No : | P24161 |
| Immunogen : | Purified recombinant fragment of human CD247 expressed in E. Coli. |
| Specificity : | CD247 Monoclonal Antibody detects endogenous levels of CD247 protein. |
| Formulation : | Liquid in PBS containing 50% glycerol, 0.5% BSA and 0.02% sodium azide. |
| Source : | Monoclonal, Mouse |
| Dilution : | WB 1:500 - 1:2000. IHC 1:200 - 1:1000. IF 1:200 - 1:1000. Flow cytometry: 1:200 - 1:400. ELISA: 1:10000. Not yet tested in other applications. |
| Purification : | Affinity purification |
| Storage Stability : | -15°C to -25°C/1 year(Do not lower than -25°C) |

| | |
|-------------------------------|---|
| Molecularweight : | 19kD |
| Cell Pathway : | Natural killer cell mediated cytotoxicity;T_Cell_Receptor; |
| P References : | <ol style="list-style-type: none">1. J Immunol. 2002 Aug 15;169(4):1705-12.2. Arthritis Rheum. 2003 Jul;48(7):1948-55.3. Nat Methods. 2005 Aug;2(8):591-8. |
| Background : | <p>The protein encoded by this gene is T-cell receptor zeta, which together with T-cell receptor alpha/beta and gamma/delta heterodimers, and with CD3-gamma, -delta and -epsilon, forms the T-cell receptor-CD3 complex. The zeta chain plays an important role in coupling antigen recognition to several intracellular signal-transduction pathways. Low expression of the antigen results in impaired immune response. Two alternatively spliced transcript variants encoding distinct isoforms have been found for this gene. [provided by RefSeq, Jul 2008],</p> |
| Function : | <p>disease:Defects in CD247 are a cause of primary T-cell immunodeficiency [MIM:610163]. Affected individuals suffer of recurrent infections. Patients T-cell counts are very low and B-cell counts are normal.,domain:The ITAM domains mediate interaction with SHB.,function:Probable role in assembly and expression of the TCR complex as well as signal transduction upon antigen triggering.,online information:CD247 mutation db,PTM:Phosphorylated on Tyr residues after T-cell receptor triggering.,similarity:Belongs to the CD3Z/FCER1G family.,similarity:Contains 3 ITAM domains.,subunit:The TCR/CD3 complex of T-lymphocytes consists of either a TCR alpha/beta or TCR gamma/delta heterodimer coexpressed at the cell surface with the invariant subunits of CD3 labeled gamma, delta, epsilon, zeta, and eta. CD3-zeta forms either homodimers or heterodimers with CD3-eta. Interacts with SLA and SLA2. Interacts w</p> |
| Subcellular Location : | Cell membrane ; Single-pass type I membrane protein. |
| Expression : | CD3Z is expressed in normal lymphoid tissue and in peripheral blood mononuclear cells (PBMCs) (PubMed:11722641). |
| Tag : | hot |
| Sort : | 3494 |
| No4 : | 1 |
| Host : | Mouse |
| Modifications : | Unmodified |

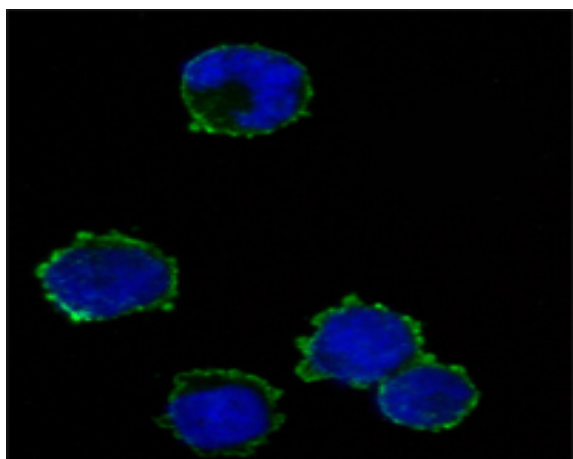
Products Images



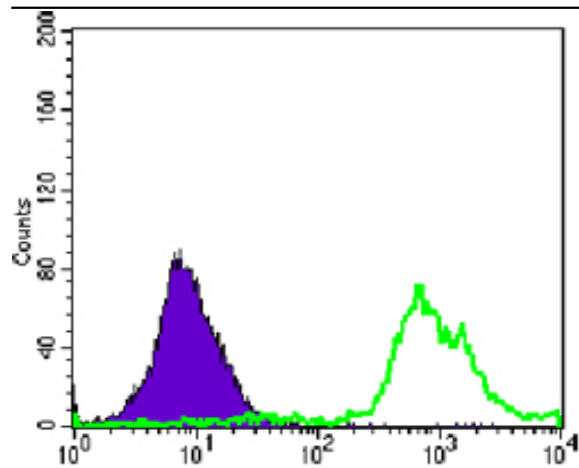
Western Blot analysis using CD247 Monoclonal Antibody against CD247-hlgGFc transfected HEK293 cell lysate.



Immunohistochemistry analysis of paraffin-embedded human Thymus tissues with AEC staining using CD247 Monoclonal Antibody.



Immunofluorescence analysis of K562 cells using CD247 Monoclonal Antibody (green). Blue: DRAQ5 fluorescent DNA dye.



Flow cytometric analysis of Jurkat cells using CD247 Monoclonal Antibody (green) and negative control (purple).