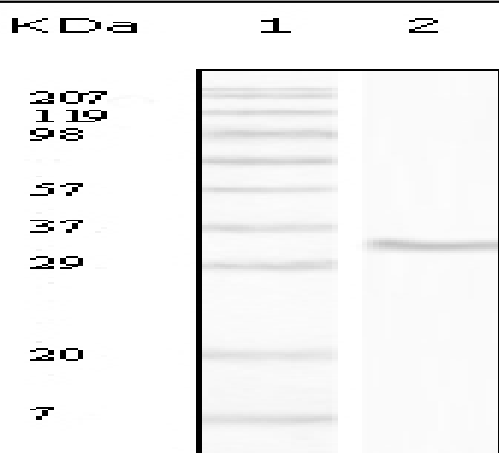


CD34 Monoclonal Antibody

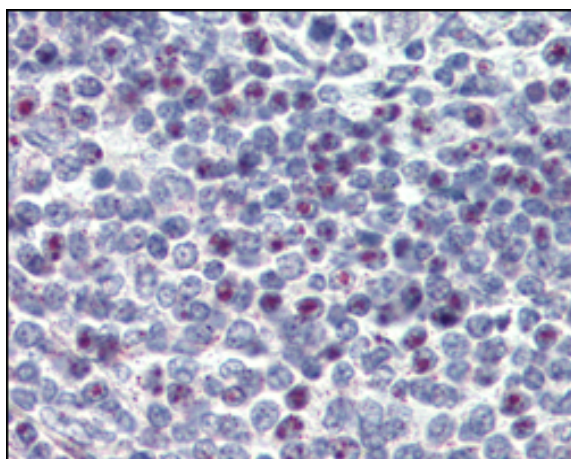
Catalog No :	YM0120
Reactivity :	Human
Applications :	WB;IHC;IF;ELISA
Target :	CD34
Fields :	>>Cell adhesion molecules;>>Hematopoietic cell lineage
Gene Name :	CD34
Protein Name :	Hematopoietic progenitor cell antigen CD34
Human Gene Id :	947
Human Swiss Prot No :	P28906
Mouse Swiss Prot No :	Q64314
Immunogen :	Purified recombinant fragment of CD34 expressed in E. Coli.
Specificity :	CD34 Monoclonal Antibody detects endogenous levels of CD34 protein.
Formulation :	Liquid in PBS containing 50% glycerol, 0.5% BSA and 0.02% sodium azide.
Source :	Monoclonal, Mouse
Dilution :	WB 1:500 - 1:2000. IHC 1:200 - 1:1000. IF 1:200 - 1:1000. ELISA: 1:10000. Not yet tested in other applications.
Purification :	Affinity purification
Storage Stability :	-15°C to -25°C/1 year(Do not lower than -25°C)
Molecularweight :	41kD

Cell Pathway :	Cell adhesion molecules (CAMs);Hematopoietic cell lineage;
P References :	<ol style="list-style-type: none">1. Sho E., et al. Arterioscler Thromb Vasc Biol. 2004; 24: 1916-21.2. Satterthwaite, A.B.,et al. Genomics.1992;12:788-794.3. Krause, D.S.,et al. 1994. Blood.84: 691-701.
Background :	The protein encoded by this gene may play a role in the attachment of stem cells to the bone marrow extracellular matrix or to stromal cells. This single-pass membrane protein is highly glycosylated and phosphorylated by protein kinase C. Two transcript variants encoding different isoforms have been found for this gene. [provided by RefSeq, Aug 2011],
Function :	alternative products:Both isoforms are expressed on the cell surface. CD34-T/CD34-F ratio increases with cell differentiation,developmental stage:On early hematopoietic progenitor cells.,disease:Abnormal CD34 expression in leukemogenesis.,function:Possible adhesion molecule with a role in early hematopoiesis by mediating the attachment of stem cells to the bone marrow extracellular matrix or directly to stromal cells. Could act as a scaffold for the attachment of lineage specific glycans, allowing stem cells to bind to lectins expressed by stromal cells or other marrow components. Presents carbohydrate ligands to selectins.,online information:CD34 entry,PTM:Highly glycosylated.,PTM:Phosphorylated on serine residues by PKC.,similarity:Belongs to the CD34 family.,tissue specificity:Selectively expressed on hematopoietic progenitor cells and the small vessel endothelium of a variety of tiss
Subcellular Location :	Membrane; Single-pass type I membrane protein.
Expression :	Selectively expressed on hematopoietic progenitor cells and the small vessel endothelium of a variety of tissues.
Sort :	3558
No4 :	1
Host :	Mouse
Modifications :	Unmodified

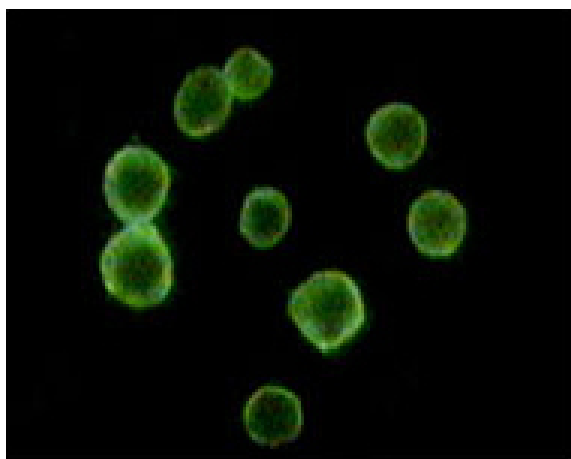
Products Images



Western Blot analysis using CD34 Monoclonal Antibody against truncated CD34 recombinant protein.



Immunohistochemistry analysis of paraffin-embedded human spleen tissues with DAB staining using CD34 Monoclonal Antibody.



Immunofluorescence analysis of peripheral blood cells using CD34 Monoclonal Antibody.