

CD37 Monoclonal Antibody

| | |
|------------------------------|--|
| Catalog No : | YM0121 |
| Reactivity : | Human;Mouse |
| Applications : | IF;ELISA |
| Target : | CD37 |
| Fields : | >>Hematopoietic cell lineage |
| Gene Name : | CD37 |
| Protein Name : | Leukocyte antigen CD37 |
| Human Gene Id : | 951 |
| Human Swiss Prot No : | P11049 |
| Mouse Gene Id : | 12493 |
| Mouse Swiss Prot No : | Q61470 |
| Immunogen : | Purified recombinant fragment of CD37 expressed in E. Coli. |
| Specificity : | CD37 Monoclonal Antibody detects endogenous levels of CD37 protein. |
| Formulation : | Liquid in PBS containing 50% glycerol, 0.5% BSA and 0.02% sodium azide. |
| Source : | Monoclonal, Mouse |
| Dilution : | IF 1:200 - 1:1000. ELISA: 1:10000. Not yet tested in other applications. |
| Purification : | Affinity purification |
| Storage Stability : | -15°C to -25°C/1 year(Do not lower than -25°C) |
| Cell Pathway : | Hematopoietic cell lineage; |

P References : 1. J Immunol. 2004 Mar 1;172(5):2953-61.
2. J Immunol. 2007 Jan 1;178(1):154-62.

Background : The protein encoded by this gene is a member of the transmembrane 4 superfamily, also known as the tetraspanin family. Most of these members are cell-surface proteins that are characterized by the presence of four hydrophobic domains. The proteins mediate signal transduction events that play a role in the regulation of cell development, activation, growth and motility. This encoded protein is a cell surface glycoprotein that is known to complex with integrins and other transmembrane 4 superfamily proteins. It may play a role in T-cell-B-cell interactions. Alternate splicing results in multiple transcript variants encoding different isoforms. [provided by RefSeq, Jul 2008],

Function : similarity:Belongs to the tetraspanin (TM4SF) family.,tissue specificity:B-lymphocytes.,

Subcellular Location : Membrane; Multi-pass membrane protein.

Expression : B-lymphocytes.

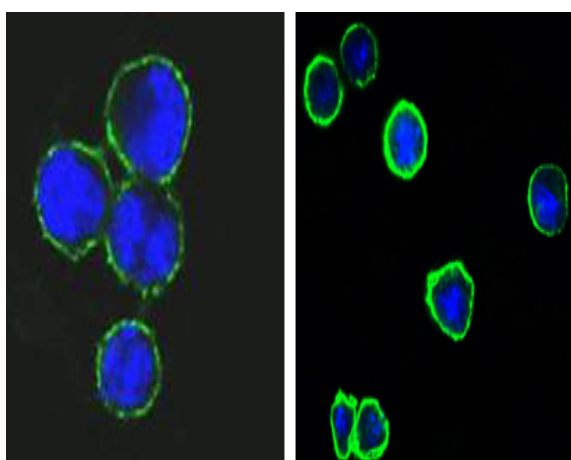
Sort : 3565

No4 : 1

Host : Mouse

Modifications : Unmodified

Products Images



Confocal immunofluorescence analysis of methanol-fixed BCBL-1 (left) and L1210 (right) cells using CD37 Monoclonal Antibody (green), showing membrane localization. Blue: DRAQ5 fluorescent DNA dye.