

CD66e Monoclonal Antibody

Catalog No :	YM0129
Reactivity :	Human
Applications :	WB;IF;ELISA
Target :	CEA
Gene Name :	CEACAM5
Protein Name :	Carcinoembryonic antigen-related cell adhesion molecule 5
Human Gene Id :	1048
Human Swiss Prot No :	P06731
Mouse Swiss Prot No :	Q3UUK2
Immunogen :	Purified recombinant fragment of human CD66e expressed in E. Coli.
Specificity :	CD66e Monoclonal Antibody detects endogenous levels of CD66e protein.
Formulation :	Liquid in PBS containing 50% glycerol, 0.5% BSA and 0.02% sodium azide.
Source :	Monoclonal, Mouse
Dilution :	WB 1:500 - 1:2000. IF 1:200 - 1:1000. ELISA: 1:10000. Not yet tested in other applications.
Purification :	Affinity purification
Storage Stability :	-15°C to -25°C/1 year(Do not lower than -25°C)
Molecularweight :	77kD
P References :	1. Scand J Clin Lab Invest. 2008;68(8):703-13. 2. Xi Bao Yu Fen Zi Mian Yi Xue Za Zhi. 2008 Apr;24(4):370-2. Chinese.

Background : This gene encodes a cell surface glycoprotein that represents the founding member of the carcinoembryonic antigen (CEA) family of proteins. The encoded protein is used as a clinical biomarker for gastrointestinal cancers and may promote tumor development through its role as a cell adhesion molecule. Additionally, the encoded protein may regulate differentiation, apoptosis, and cell polarity. This gene is present in a CEA family gene cluster on chromosome 19. Alternative splicing results in multiple transcript variants. [provided by RefSeq, Jul 2015],

Function : function:Cell surface glycoprotein that plays a role in cell adhesion and in intracellular signaling. Receptor for E.coli Dr adhesins.,PTM:Complex immunoreactive glycoprotein with a MW of 180 kDa comprising 60% carbohydrate.,similarity:Belongs to the immunoglobulin superfamily. CEA family.,similarity:Contains 7 Ig-like (immunoglobulin-like) domains.,subunit:Homodimer. Binding of E.coli Dr adhesins leads to dissociation of the homodimer.,tissue specificity:Found in adenocarcinomas of endodermally derived digestive system epithelium and fetal colon.,

Subcellular Location : Cell membrane ; Lipid-anchor, GPI-anchor . Apical cell membrane . Cell surface . Localized to the apical glycocalyx surface. .

Expression : Expressed in columnar epithelial and goblet cells of the colon (at protein level) (PubMed:10436421). Found in adenocarcinomas of endodermally derived digestive system epithelium and fetal colon.

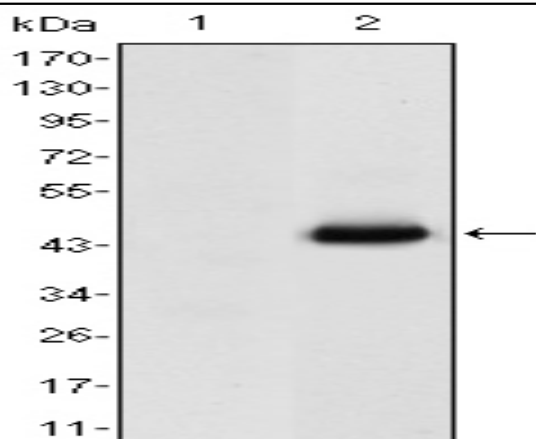
Sort : 3642

No4 : 1

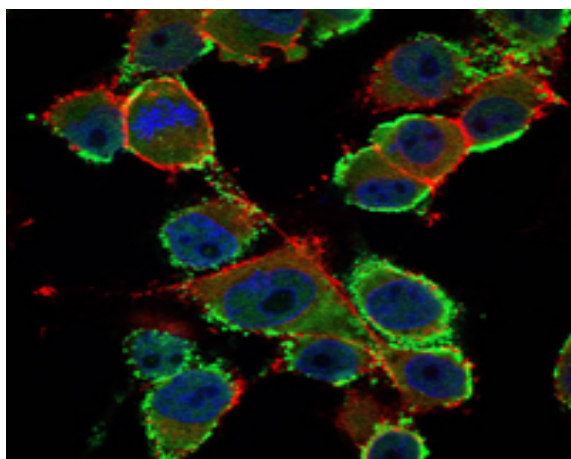
Host : Mouse

Modifications : Unmodified

Products Images



Western Blot analysis using CD66e Monoclonal Antibody against HEK293 (1) and CEA-hlgGfc transfected HEK293 (2) cell lysate.



Immunofluorescence analysis of PANC-1 cells using CD66e Monoclonal Antibody (green). Blue: DRAQ5 fluorescent DNA dye. Red: Actin filaments have been labeled with Alexa Fluor-555 phalloidin.

