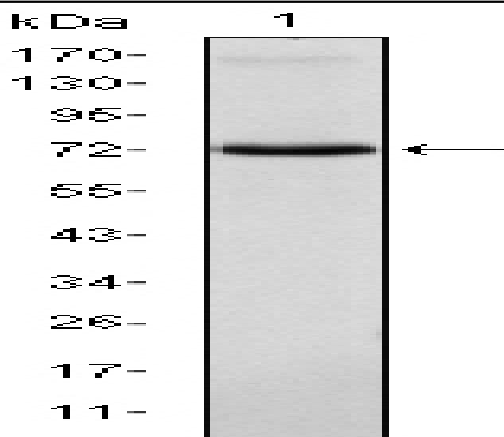


Emt Monoclonal Antibody

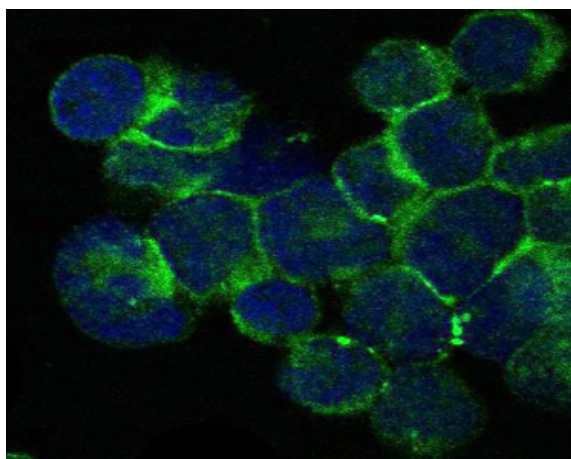
Catalog No :	YM0218
Reactivity :	Human
Applications :	WB;IF;FCM;ELISA
Target :	Emt
Fields :	>>Chemokine signaling pathway;>>T cell receptor signaling pathway;>>Leukocyte transendothelial migration
Gene Name :	ITK
Protein Name :	Tyrosine-protein kinase ITK/TSK
Human Gene Id :	3702
Human Swiss Prot No :	Q08881
Mouse Swiss Prot No :	Q03526
Immunogen :	Purified recombinant fragment of human Emt expressed in E. Coli.
Specificity :	Emt Monoclonal Antibody detects endogenous levels of Emt protein.
Formulation :	Liquid in PBS containing 50% glycerol, 0.5% BSA and 0.02% sodium azide.
Source :	Monoclonal, Mouse
Dilution :	WB 1:500 - 1:2000. IF 1:200 - 1:1000. Flow cytometry: 1:200 - 1:400. ELISA: 1:10000. Not yet tested in other applications.
Purification :	Affinity purification
Storage Stability :	-15°C to -25°C/1 year(Do not lower than -25°C)
Molecularweight :	72kD

Cell Pathway :	Chemokine;T_Cell_Receptor;Leukocyte transendothelial migration;
P References :	1. J Clin Invest. 2009 May;119(5):1350-8. 2. Mol Cells. 2009 Aug 31;28(2):125-30.
Background :	This gene encodes an intracellular tyrosine kinase expressed in T-cells. The protein contains both SH2 and SH3 domains which are often found in intracellular kinases. It is thought to play a role in T-cell proliferation and differentiation. [provided by RefSeq, Jul 2008],
Function :	catalytic activity:ATP + a [protein]-L-tyrosine = ADP + a [protein]-L-tyrosine phosphate.,cofactor:Binds 1 zinc ion per subunit.,function:Plays a role in T-cell proliferation and differentiation.,induction:By interleukin-2.,similarity:Belongs to the protein kinase superfamily. Tyr protein kinase family. TEC subfamily.,similarity:Contains 1 Btk-type zinc finger.,similarity:Contains 1 PH domain.,similarity:Contains 1 protein kinase domain.,similarity:Contains 1 SH2 domain.,similarity:Contains 1 SH3 domain.,subcellular location:Localizes to cell surface receptors in the plasma membrane after stimulation with respective receptors (TCR, CD28, CD2) in T-cells.,tissue specificity:T-cell lines and natural killer cell lines.,
Subcellular Location :	Cytoplasm . Nucleus . Localizes in the vicinity of cell surface receptors in the plasma membrane after receptor stimulation.
Expression :	T-cell lines and natural killer cell lines.
Sort :	5542
No4 :	1
Host :	Mouse
Modifications :	Unmodified

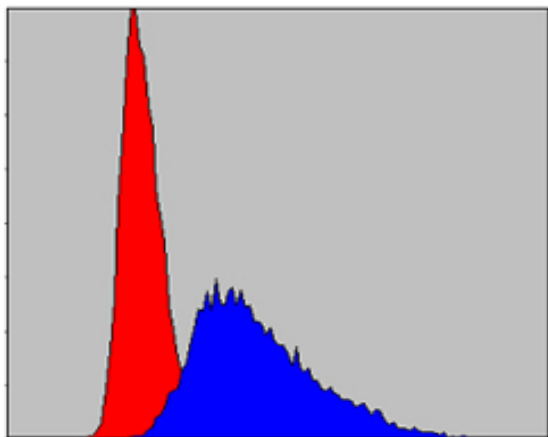
Products Images



Western Blot analysis using Emt Monoclonal Antibody against Jurkat cell lysate.



Immunofluorescence analysis of Jurkat cells using Emt Monoclonal Antibody (green). Blue: DRAQ5 fluorescent DNA dye.



Flow cytometric analysis of Jurkat cells using Emt Monoclonal Antibody (blue) and negative control (red).

