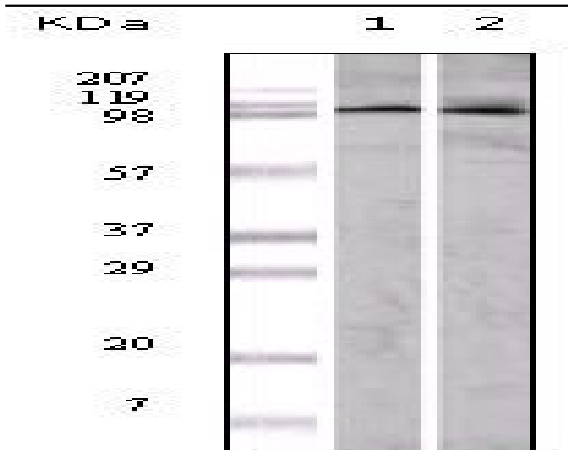


EphA1 Monoclonal Antibody

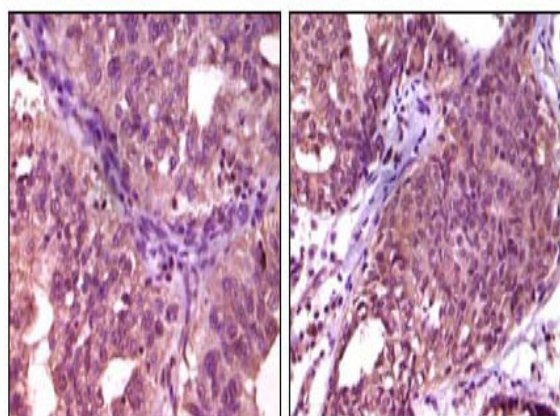
Catalog No :	YM0220
Reactivity :	Human
Applications :	WB;IHC;IF;ELISA
Target :	EphA1
Fields :	>>Axon guidance
Gene Name :	EPHA1
Protein Name :	Ephrin type-A receptor 1
Human Gene Id :	2041
Human Swiss Prot No :	P21709
Mouse Swiss Prot No :	Q60750
Immunogen :	Purified recombinant fragment of EphA1 expressed in E. Coli.
Specificity :	EphA1 Monoclonal Antibody detects endogenous levels of EphA1 protein.
Formulation :	Liquid in PBS containing 50% glycerol, 0.5% BSA and 0.02% sodium azide.
Source :	Monoclonal, Mouse
Dilution :	WB 1:500 - 1:2000. IHC 1:200 - 1:1000. ELISA: 1:10000.. IF 1:50-200
Purification :	Affinity purification
Concentration :	1 mg/ml
Storage Stability :	-15°C to -25°C/1 year(Do not lower than -25°C)
Molecularweight :	108kD

Cell Pathway :	Axon guidance;
P References :	<ol style="list-style-type: none">1. Shannon L. Duffy, Kirsten A. Steiner, Patrick P.L. Tam Gene Expr Patterns. 2006 Feb 6.2. Elena B. Pasquale. Nat Rev Mol Cell Biol.2005 Jun; 6(6): 462-75.
Background :	<p>This gene belongs to the ephrin receptor subfamily of the protein-tyrosine kinase family. EPH and EPH-related receptors have been implicated in mediating developmental events, particularly in the nervous system. Receptors in the EPH subfamily typically have a single kinase domain and an extracellular region containing a Cys-rich domain and 2 fibronectin type III repeats. The ephrin receptors are divided into 2 groups based on the similarity of their extracellular domain sequences and their affinities for binding ephrin-A and ephrin-B ligands. This gene is expressed in some human cancer cell lines and has been implicated in carcinogenesis. [provided by RefSeq, Jul 2008],</p>
Function :	<p>catalytic activity:ATP + a [protein]-L-tyrosine = ADP + a [protein]-L-tyrosine phosphate.,function:Receptor for members of the ephrin-A family. Binds with a low affinity to ephrin-A1 .,similarity:Belongs to the protein kinase superfamily. Tyr protein kinase family.,similarity:Belongs to the protein kinase superfamily. Tyr protein kinase family. Ephrin receptor subfamily.,similarity:Contains 1 protein kinase domain.,similarity:Contains 1 SAM (sterile alpha motif) domain.,similarity:Contains 2 fibronectin type-III domains.,tissue specificity:Overexpressed in several carcinomas.,</p>
Subcellular Location :	Cell membrane ; Single-pass type I membrane protein .
Expression :	Overexpressed in several carcinomas.
Sort :	5607
No4 :	1
Host :	Mouse
Modifications :	Unmodified

Products Images



Western Blot analysis using EphA1 Monoclonal Antibody against A549 (1) and HeLa (2) cell lysate.



Immunohistochemistry analysis of paraffin-embedded human ovary carcinoma (left) and breast carcinoma (right), showing cytoplasmic localization with DAB staining using EphA1 Monoclonal Antibody.