

EphA7 Monoclonal Antibody

Catalog No :	YM0227
Reactivity :	Human
Applications :	WB;IHC;IF;ELISA
Target :	EPHA7
Fields :	>>Axon guidance
Gene Name :	EPHA7
Protein Name :	Ephrin type-A receptor 7
Human Gene Id :	2045
Human Swiss Prot No :	Q15375
Mouse Swiss Prot No :	Q61772
Immunogen :	Purified recombinant fragment of EphA7 (aa27-210) expressed in E. Coli.
Specificity :	EphA7 Monoclonal Antibody detects endogenous levels of EphA7 protein.
Formulation :	Liquid in PBS containing 50% glycerol, 0.5% BSA and 0.02% sodium azide.
Source :	Monoclonal, Mouse
Dilution :	WB 1:500 - 1:2000. IHC 1:200 - 1:1000. ELISA: 1:10000.. IF 1:50-200
Purification :	Affinity purification
Storage Stability :	-15°C to -25°C/1 year(Do not lower than -25°C)
Molecularweight :	112kD
Cell Pathway :	Axon guidance;

P References :

1. Genome Res. 2004 Oct;14(10B):2121-7.
2. Nature. 2005 Oct 20;437(7062):1173-8.

Background :

This gene belongs to the ephrin receptor subfamily of the protein-tyrosine kinase family. EPH and EPH-related receptors have been implicated in mediating developmental events, particularly in the nervous system. Receptors in the EPH subfamily typically have a single kinase domain and an extracellular region containing a Cys-rich domain and 2 fibronectin type III repeats. The ephrin receptors are divided into 2 groups based on the similarity of their extracellular domain sequences and their affinities for binding ephrin-A and ephrin-B ligands. Increased expression of this gene is associated with multiple forms of carcinoma. Alternative splicing results in multiple transcript variants. [provided by RefSeq, Dec 2013],

Function :

catalytic activity:ATP + a [protein]-L-tyrosine = ADP + a [protein]-L-tyrosine phosphate.,function:Receptor for members of the ephrin-A family. Binds to ephrin-A1, -A2, -A3, -A4 and -A5.,similarity:Belongs to the protein kinase superfamily. Tyr protein kinase family. Ephrin receptor subfamily.,similarity:Contains 1 protein kinase domain.,similarity:Contains 1 SAM (sterile alpha motif) domain.,similarity:Contains 2 fibronectin type-III domains.,subunit:Interacts with PRKCABP and GRIP1.,tissue specificity:Widely expressed.,

Subcellular**Location :**

Cell membrane ; Single-pass type I membrane protein .

Expression :

Widely expressed.

Sort :

5636

No4 :

1

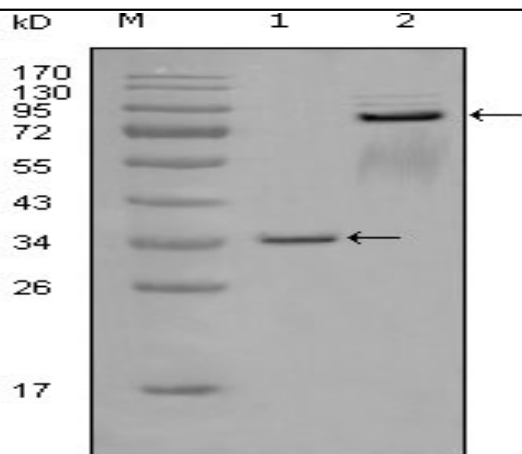
Host :

Mouse

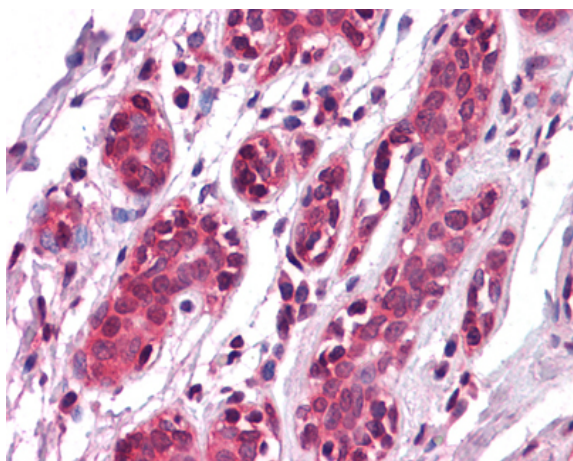
Modifications :

Unmodified

Products Images



Western Blot analysis using EphA7 Monoclonal Antibody against truncated GST-EphA7 recombinant protein (1) and truncated EphA7 (aa25-556)-hlgGfc transfected CHOK1 cell lysate (2).



Immunohistochemistry analysis of paraffin-embedded human Breast tissues with AEC staining using EphA7 Monoclonal Antibody.