

## FoxP2 Monoclonal Antibody

<b>Catalog No :</b>	YM0284
<b>Reactivity :</b>	Human
<b>Applications :</b>	WB;ELISA
<b>Target :</b>	FoxP2
<b>Gene Name :</b>	FOXP2
<b>Protein Name :</b>	Forkhead box protein P2
<b>Human Gene Id :</b>	93986
<b>Human Swiss Prot No :</b>	O15409
<b>Mouse Swiss Prot No :</b>	P58463
<b>Immunogen :</b>	Purified recombinant fragment of human FoxP2 expressed in E. Coli.
<b>Specificity :</b>	FoxP2 Monoclonal Antibody detects endogenous levels of FoxP2 protein.
<b>Formulation :</b>	Liquid in PBS containing 50% glycerol, 0.5% BSA and 0.02% sodium azide.
<b>Source :</b>	Monoclonal, Mouse
<b>Dilution :</b>	WB 1:500 - 1:2000. ELISA: 1:10000. Not yet tested in other applications.
<b>Purification :</b>	Affinity purification
<b>Storage Stability :</b>	-15°C to -25°C/1 year(Do not lower than -25°C)
<b>Molecularweight :</b>	80kD
<b>P References :</b>	1. Nature. 2009 Nov 12;462(7270):213-7. 2. Mol Biol Evol. 2009 Oct;26(10):2181-4.

**Background :** This gene encodes a member of the forkhead/winged-helix (FOX) family of transcription factors. It is expressed in fetal and adult brain as well as in several other organs such as the lung and gut. The protein product contains a FOX DNA-binding domain and a large polyglutamine tract and is an evolutionarily conserved transcription factor, which may bind directly to approximately 300 to 400 gene promoters in the human genome to regulate the expression of a variety of genes. This gene is required for proper development of speech and language regions of the brain during embryogenesis, and may be involved in a variety of biological pathways and cascades that may ultimately influence language development. Mutations in this gene cause speech-language disorder 1 (SPCH1), also known as autosomal dominant speech and language disorder with orofacial dyspraxia. Multiple alternative transcripts encoding different isoforms

**Function :** developmental stage: Expressed in the brain at 15 and 22 weeks of gestation, with a pattern of strong cortical, basal ganglia, thalamic and cerebellar expression. Highly expressed in the head and tail of nucleus caudatus and putamen. Restricted expression within the globus pallidus, with high levels in the pars interna, which provides the principal source of output from the basal ganglia to the nucleus centrum medianum thalami (CM) and the major motor relay nuclei of the thalamus. In the thalamus, present in the CM and nucleus medialis dorsalis thalami. Lower levels are observed in the nuclei anterior thalami, dorsal and ventral, and the nucleus parafascicularis thalami. Expressed in the ventrobasal complex comprising the nucleus ventralis posterior lateralis/medialis. The ventral tier of the thalamus exhibits strong expression, including nuclei ventralis anterior, lateralis and posterior

**Subcellular Location :** Nucleus .

**Expression :** Isoform 1 and isoform 6 are expressed in adult and fetal brain, caudate nucleus and lung.

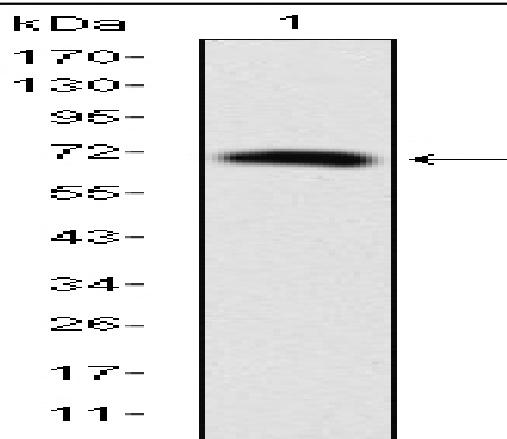
**Sort :** 6275

**No4 :** 1

**Host :** Mouse

**Modifications :** Unmodified

## Products Images



Western Blot analysis using FoxP2 Monoclonal Antibody against recombinant protein.

