

## Fucokinase Monoclonal Antibody

<b>Catalog No :</b>	YM0288
<b>Reactivity :</b>	Human;Mouse;Rat;Monkey
<b>Applications :</b>	WB;FCM;ELISA
<b>Target :</b>	Fucokinase
<b>Fields :</b>	>>Fructose and mannose metabolism;>>Amino sugar and nucleotide sugar metabolism;>>Metabolic pathways;>>Biosynthesis of nucleotide sugars
<b>Gene Name :</b>	FUK
<b>Protein Name :</b>	L-fucose kinase
<b>Human Gene Id :</b>	197258
<b>Human Swiss Prot No :</b>	Q8N0W3
<b>Immunogen :</b>	Purified recombinant fragment of human Fucokinase expressed in E. Coli.
<b>Specificity :</b>	Fucokinase Monoclonal Antibody detects endogenous levels of Fucokinase protein.
<b>Formulation :</b>	Liquid in PBS containing 50% glycerol, 0.5% BSA and 0.02% sodium azide.
<b>Source :</b>	Monoclonal, Mouse
<b>Dilution :</b>	WB 1:500 - 1:2000. Flow cytometry: 1:200 - 1:400. ELISA: 1:10000. Not yet tested in other applications.
<b>Purification :</b>	Affinity purification
<b>Storage Stability :</b>	-15°C to -25°C/1 year(Do not lower than -25°C)
<b>Molecularweight :</b>	118kD
<b>Cell Pathway :</b>	Fructose and mannose metabolism;Amino sugar and nucleotide sugar

metabolism;

---

**P References :**

1. J Hum Ergol (Tokyo). 2009 Dec;38(2):81-8.
  2. Ophthalmologica. 2009;223(4):233-8.
- 

**Background :**

fucokinase(FUK) Homo sapiens The protein encoded by this gene belongs to the GHMP (galacto-, homoserine, mevalonate and phosphomevalonate) kinase family and catalyzes the phosphorylation of L-fucose to form beta-L-fucose 1-phosphate. This enzyme catalyzes the first step in the utilization of free L-fucose in glycoprotein and glycolipid synthesis. L-fucose may be important in mediating a number of cell-cell interactions such as blood group antigen recognition, inflammation, and metastasis. While several transcript variants may exist for this gene, the full-length nature of only one has been described to date. [provided by RefSeq, Jul 2008],

---

**Function :**

catalytic activity:ATP + L-fucose = ADP + beta-L-fucose 1-phosphate.,function:Takes part in the salvage pathway for reutilization of fucose from the degradation of oligosaccharides.,similarity:Belongs to the GHMP kinase family.,

---

**Subcellular Location :**cytoplasm,cytosol,

---

**Expression :**Expressed in fibroblasts.

---

**Sort :**6316

---

**No4 :**1

---

**Host :**Mouse

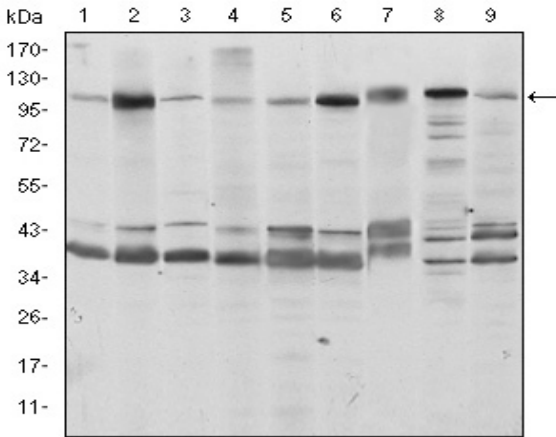
---

**Modifications :**Unmodified

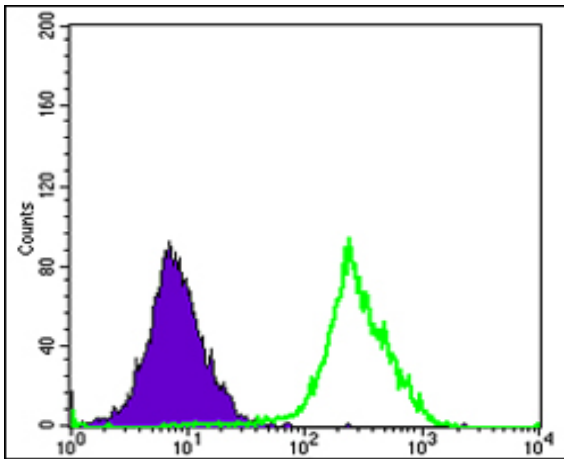
---

---

**Products Images**



Western Blot analysis using Fucokinase Monoclonal Antibody against HeLa (1), HepG2 (2), Jurkat (3), A431 (4), HEK293 (5), MCF-7 (6), PC-12 (7), Cos7 (8), and NIH/3T3 (9) cell lysate.



Flow cytometric analysis of HeLa cells using Fucokinase Monoclonal Antibody (green) and negative control (purple).

