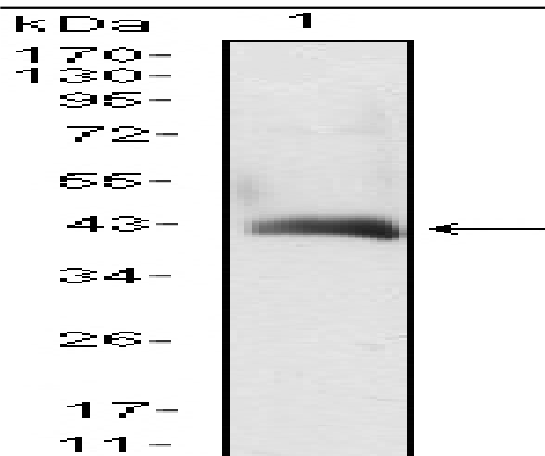


GM-CSF Monoclonal Antibody

Catalog No :	YM0311
Reactivity :	Human
Applications :	WB;ELISA
Target :	GM-CSF
Fields :	>>Cytokine-cytokine receptor interaction;>>JAK-STAT signaling pathway;>>Hematopoietic cell lineage;>>Natural killer cell mediated cytotoxicity;>>IL-17 signaling pathway;>>T cell receptor signaling pathway;>>Fc epsilon RI signaling pathway;>>TNF signaling pathway;>>Shigellosis;>>Amoebiasis;>>Human T-cell leukemia virus 1 infection;>>Kaposi sarcoma-associated herpesvirus infection;>>Coronavirus disease - COVID-19;>>Transcriptional misregulation in cancer;>>Acute myeloid leukemia;>>Rheumatoid arthritis
Gene Name :	CSF2
Protein Name :	Granulocyte-macrophage colony-stimulating factor
Human Gene Id :	1437
Human Swiss Prot No :	P04141
Mouse Swiss Prot No :	P01587
Immunogen :	Purified recombinant fragment of human GM-CSF (aa18-144) expressed in E. Coli.
Specificity :	GM-CSF Monoclonal Antibody detects endogenous levels of GM-CSF protein.
Formulation :	Liquid in PBS containing 50% glycerol, 0.5% BSA and 0.02% sodium azide.
Source :	Monoclonal, Mouse
Dilution :	WB 1:500 - 1:2000. ELISA: 1:10000. Not yet tested in other applications. Affinity purification

Storage Stability :	-15°C to -25°C/1 year(Do not lower than -25°C)
Molecularweight :	16kD
Cell Pathway :	Cytokine-cytokine receptor interaction;Jak_STAT;Hematopoietic cell lineage;Natural killer cell mediated cytotoxicity;T_Cell_Receptor;Fc epsilon RI;
P References :	<ol style="list-style-type: none">1. Eur Respir J. 2008 Jul;32(1):25-34.2. Cell. 2008 Aug 8;134(3):496-507.3. Mol Immunol. 2008 Nov;46(1):37-44.
Background :	The protein encoded by this gene is a cytokine that controls the production, differentiation, and function of granulocytes and macrophages. The active form of the protein is found extracellularly as a homodimer. This gene has been localized to a cluster of related genes at chromosome region 5q31, which is known to be associated with interstitial deletions in the 5q- syndrome and acute myelogenous leukemia. Other genes in the cluster include those encoding interleukins 4, 5, and 13. [provided by RefSeq, Jul 2008],
Function :	function:Cytokine that stimulates the growth and differentiation of hematopoietic precursor cells from various lineages, including granulocytes, macrophages, eosinophils and erythrocytes.,online information:Clinical information on Leukine,pharmaceutical:Available under the names Leukine (Immunex) and Leucomax (Novartis). Used in myeloid reconstitution following bone marrow transplant, bone marrow transplant engraftment failure or delay, mobilization and following transplantation of autologous peripheral blood progenitor cells, and following induction chemotherapy in older adults with acute myelogenous leukemia.,polymorphism:Variant Ile-117 may be a risk factor for atopic asthma.,similarity:Belongs to the GM-CSF family.,subunit:Monomer.,
Subcellular Location :	Secreted .
Expression :	Peripheral blood,
Sort :	6666
No4 :	1
Host :	Mouse
Modifications :	Unmodified

Products Images



Western Blot analysis using GM-CSF Monoclonal Antibody against CSF2-hlgGfc transfected HEK293 cell lysate.