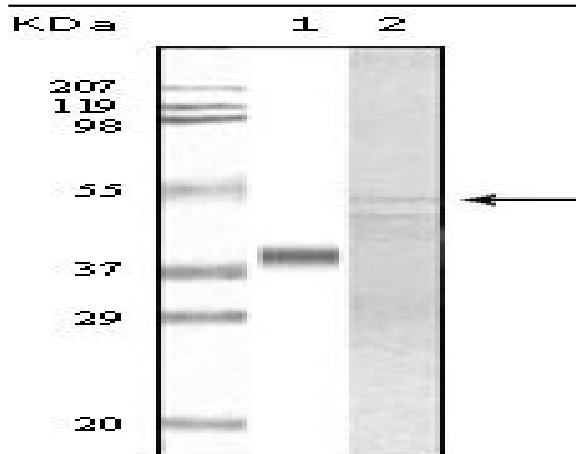


GSK3 α Monoclonal Antibody

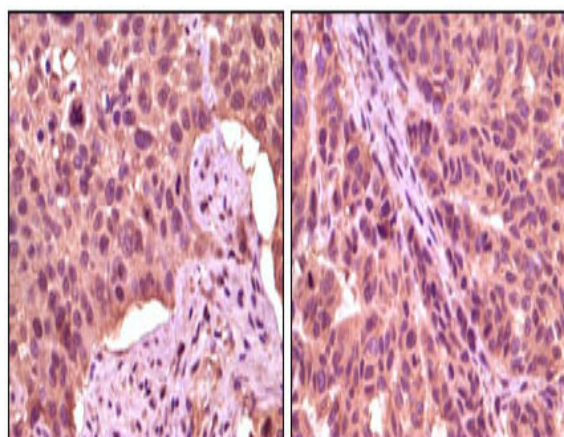
Catalog No :	YM0315
Reactivity :	Human
Applications :	WB;IHC;IF;ELISA
Target :	GSK3 α
Fields :	>>Chemokine signaling pathway;>>Dopaminergic synapse;>>Non-alcoholic fatty liver disease;>>Shigellosis
Gene Name :	GSK3A
Protein Name :	Glycogen synthase kinase-3 alpha
Human Gene Id :	2931
Human Swiss Prot No :	P49840
Mouse Swiss Prot No :	Q2NL51
Immunogen :	Purified recombinant fragment of GSK3 α expressed in E. Coli.
Specificity :	GSK3 α Monoclonal Antibody detects endogenous levels of GSK3 α protein.
Formulation :	Liquid in PBS containing 50% glycerol, 0.5% BSA and 0.02% sodium azide.
Source :	Monoclonal, Mouse
Dilution :	WB 1:500 - 1:2000. IHC 1:200 - 1:1000. ELISA: 1:10000.. IF 1:50-200
Purification :	Affinity purification
Storage Stability :	-15°C to -25°C/1 year(Do not lower than -25°C)
Molecularweight :	51kD

Cell Pathway :	Chemokine;
P References :	<ol style="list-style-type: none">1. Bradley W. Doble and James R. Woodgett. J. Cell Sci., Apr 2003; 116: 1175.2. C. Laura Sayas , Aafke Ariaens, Bas Ponsioen. Mol. Biol. Cell, Apr 2006; 17: 1834 – 1844.
Background :	glycogen synthase kinase 3 alpha(GSK3A) Homo sapiens This gene encodes a multifunctional Ser/Thr protein kinase that is implicated in the control of several regulatory proteins including glycogen synthase, and transcription factors, such as JUN. It also plays a role in the WNT and PI3K signaling pathways, as well as regulates the production of beta-amyloid peptides associated with Alzheimer's disease. [provided by RefSeq, Oct 2011],
Function :	catalytic activity:ATP + [tau protein] = ADP + [tau protein] phosphate.,function:Implicated in the hormonal control of several regulatory proteins including glycogen synthase, MYB and the transcription factor JUN.,similarity:Belongs to the protein kinase superfamily.,similarity:Belongs to the protein kinase superfamily. CMGC Ser/Thr protein kinase family. GSK-3 subfamily.,similarity:Contains 1 protein kinase domain.,subunit:Monomer.,
Subcellular Location :	mitochondrion,cytosol,beta-catenin destruction complex,postsynapse,
Expression :	Brain,Eye,Foreskin,Lung,Pancreas,Platelet,Testis,
Sort :	7164
No4 :	1
Host :	Mouse
Modifications :	Unmodified

Products Images



Western Blot analysis using GSK3 α Monoclonal Antibody against truncated GSK3 alpha recombinant protein (1) and A549 cell lysate (2).



Immunohistochemistry analysis of paraffin-embedded human lung carcinoma (left) and skin carcinoma (right), showing cytoplasmic localization with DAB staining using GSK3 α Monoclonal Antibody.