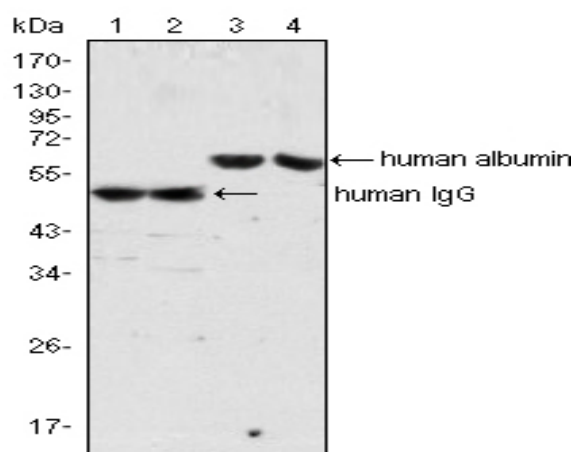


Human IgG Monoclonal Antibody

Catalog No :	YM0344
Reactivity :	Human
Applications :	WB;ELISA
Target :	Human IgG
Immunogen :	Human IgG was isolated from human sera and purified by chromatography.
Specificity :	Human IgG Monoclonal Antibody detects Human IgG protein.
Formulation :	Liquid in PBS containing 50% glycerol, 0.5% BSA and 0.02% sodium azide.
Source :	Monoclonal, Mouse
Dilution :	WB 1:500 - 1:2000. ELISA: 1:10000. Not yet tested in other applications.
Purification :	Affinity purification
Concentration :	1 mg/ml
Storage Stability :	-15°C to -25°C/1 year(Do not lower than -25°C)
P References :	1. Roitt,I, et al "Immunology", Mosby, London, England, (1996) fourth edition. 2. Vlug, A. et al "The structure and function of human IgG subclasses". Eur.Clin.Lab. 8, 26 (1989).
Sort :	8097
No4 :	1
Host :	Mouse
Modifications :	Unmodified

Products Images



Western Blot analysis using Human IgG Monoclonal Antibody (lane 1, 2) and ALB Monoclonal Antibody (lane 3, 4) against human serum (lane 1, 3) and plasma (lane 2, 4).