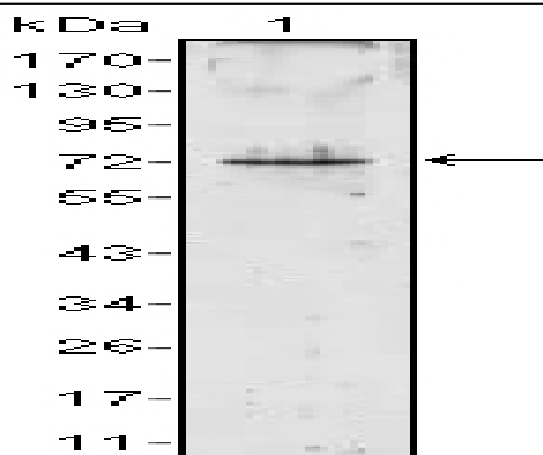


## PR3 Monoclonal Antibody

<b>Catalog No :</b>	YM0532
<b>Reactivity :</b>	Human
<b>Applications :</b>	WB;ELISA
<b>Target :</b>	PR3
<b>Gene Name :</b>	PRTN3
<b>Protein Name :</b>	Myeloblastin
<b>Human Gene Id :</b>	5657
<b>Human Swiss Prot No :</b>	P24158
<b>Mouse Swiss Prot No :</b>	Q61096
<b>Immunogen :</b>	Purified recombinant fragment of human PR3 expressed in E. Coli.
<b>Specificity :</b>	PR3 Monoclonal Antibody detects endogenous levels of PR3 protein.
<b>Formulation :</b>	Liquid in PBS containing 50% glycerol, 0.5% BSA and 0.02% sodium azide.
<b>Source :</b>	Monoclonal, Mouse
<b>Dilution :</b>	WB 1:500 - 1:2000. ELISA: 1:10000. Not yet tested in other applications.
<b>Purification :</b>	Affinity purification
<b>Storage Stability :</b>	-15°C to -25°C/1 year(Do not lower than -25°C)
<b>Molecularweight :</b>	28kD
<b>P References :</b>	1. Blood. 2007 Dec 1;110(12):4086-95. 2. Clin Exp Immunol. 2006 Jul;145(1):63-70.

<b>Background :</b>	<p>catalytic activity:Hydrolysis of proteins, including elastin, by preferential cleavage: -Ala- -Xaa- &gt; -Val- -Xaa-.,function:Polymorphonuclear leukocyte serine protease that degrades elastin, fibronectin, laminin, vitronectin, and collagen types I, III, and IV (in vitro) and causes emphysema when administered by tracheal insufflation to hamsters.,online information:Proteinase 3 entry,similarity:Belongs to the peptidase S1 family. Elastase subfamily.,similarity:Contains 1 peptidase S1 domain.,</p>
<b>Function :</b>	<p>catalytic activity:Hydrolysis of proteins, including elastin, by preferential cleavage: -Ala- -Xaa- &gt; -Val- -Xaa-.,function:Polymorphonuclear leukocyte serine protease that degrades elastin, fibronectin, laminin, vitronectin, and collagen types I, III, and IV (in vitro) and causes emphysema when administered by tracheal insufflation to hamsters.,online information:Proteinase 3 entry,similarity:Belongs to the peptidase S1 family. Elastase subfamily.,similarity:Contains 1 peptidase S1 domain.,</p>
<b>Subcellular Location :</b>	<p>Cytoplasmic granule . Secreted . Cell membrane ; Peripheral membrane protein ; Extracellular side . Membrane raft ; Peripheral membrane protein ; Extracellular side . Localizes predominantly to azurophil granules (primary secretory granules) in neutrophils (PubMed:2033050, PubMed:3198760, PubMed:7897245, PubMed:18462208). Secreted upon neutrophil stimulation by TNF-alpha, lipopolysaccharide (LPS), fMLP and CXCL8/IL8 or during neutrophil transmigration (PubMed:22266279, PubMed:28240246). Following secretion tethered to the cell membrane by CD177 (PubMed:18462208, PubMed:22266279). .</p>
<b>Expression :</b>	<p>Expressed in polymorphonuclear leukocytes (at protein level) (PubMed:2033050, PubMed:7897245, PubMed:3198760). Expressed in neutrophils (at protein level) (PubMed:28240246, PubMed:18462208, PubMed:21193407, PubMed:22266279, PubMed:17244676). Expressed in differentiating neutrophils (PubMed:18462208).</p>
<b>Sort :</b>	12980
<b>No4 :</b>	1
<b>Host :</b>	Mouse
<b>Modifications :</b>	Unmodified

## Products Images



Western Blot analysis using PR3 Monoclonal Antibody against PRTN3 (aa28-256)-hlgGFc transfected HEK293 cell lysate (1).