

## Islet-1 Monoclonal Antibody

<b>Catalog No :</b>	YM0382
<b>Reactivity :</b>	Human
<b>Applications :</b>	WB;IHC;IF;ELISA
<b>Target :</b>	Islet-1
<b>Fields :</b>	>>Signaling pathways regulating pluripotency of stem cells
<b>Gene Name :</b>	ISL1
<b>Protein Name :</b>	Insulin gene enhancer protein ISL-1
<b>Human Gene Id :</b>	3670
<b>Human Swiss Prot No :</b>	P61371
<b>Mouse Swiss Prot No :</b>	P61372
<b>Immunogen :</b>	Purified recombinant fragment of human Islet-1 expressed in E. Coli.
<b>Specificity :</b>	Islet-1 Monoclonal Antibody detects endogenous levels of Islet-1 protein.
<b>Formulation :</b>	Liquid in PBS containing 50% glycerol, 0.5% BSA and 0.02% sodium azide.
<b>Source :</b>	Monoclonal, Mouse
<b>Dilution :</b>	WB 1:500 - 1:2000. IHC 1:200 - 1:1000. IF 1:200 - 1:1000. ELISA: 1:10000. Not yet tested in other applications.
<b>Purification :</b>	Affinity purification
<b>Storage Stability :</b>	-15°C to -25°C/1 year(Do not lower than -25°C)
<b>Molecularweight :</b>	39kD

**P References :** 1. Cell. 1996 Jan 26;84(2):309-20.  
2. J Neurosci. 2008 Mar 26;28(13):3291-7.

---

**Background :** This gene encodes a member of the LIM/homeodomain family of transcription factors. The encoded protein binds to the enhancer region of the insulin gene, among others, and may play an important role in regulating insulin gene expression. The encoded protein is central to the development of pancreatic cell lineages and may also be required for motor neuron generation. Mutations in this gene have been associated with maturity-onset diabetes of the young. [provided by RefSeq, Jul 2008],

---

**Function :** function: Binds to one of the cis-acting domain of the insulin gene enhancer., similarity: Contains 1 homeobox DNA-binding domain., similarity: Contains 2 LIM zinc-binding domains., tissue specificity: Expressed in subsets of neurons of the adrenal medulla and dorsal root ganglion, inner nuclear and ganglion cell layers in the retina, the pineal and some regions of the brain.,

---

**Subcellular Location :** Nucleus .

---

**Expression :** Expressed in subsets of neurons of the adrenal medulla and dorsal root ganglion, inner nuclear and ganglion cell layers in the retina, the pineal and some regions of the brain.

---

**Sort :** 8711

---

**No4 :** 1

---

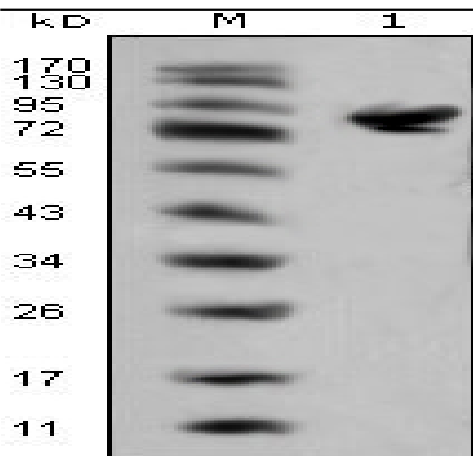
**Host :** Mouse

---

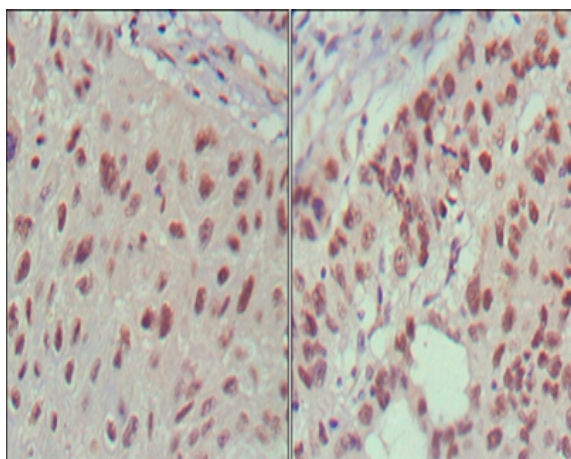
**Modifications :** Unmodified

---

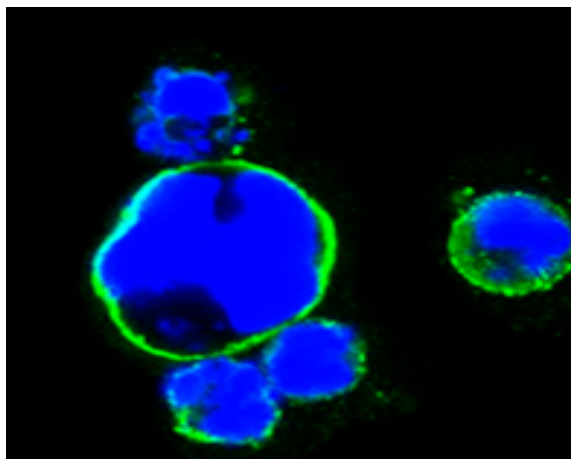
**Products Images**



Western Blot analysis using Islet-1 Monoclonal Antibody against full-length ISL1 (aa1-349)-hlgGfc transfected HEK293 cell lysate(1).



Immunohistochemistry analysis of paraffin-embedded human lung cancer (left) and cervical carcinoma (right), showing nuclear localization with DAB staining using Islet-1 Monoclonal Antibody.



Confocal immunofluorescence analysis of HEK293 cells transfected with full-length ISL1-hlgGfc using Islet-1 Monoclonal Antibody (green). Blue: DRAQ5 fluorescent DNA dye.