

JNK3 Monoclonal Antibody

Catalog No :	YM0390
Reactivity :	Human;Mouse
Applications :	WB;IF;ELISA
Target :	JNK3
Fields :	>>Endocrine resistance;>>MAPK signaling pathway;>>ErbB signaling pathway;>>Ras signaling pathway;>>cAMP signaling pathway;>>FoxO signaling pathway;>>Sphingolipid signaling pathway;>>Mitophagy - animal;>>Autophagy - animal;>>Protein processing in endoplasmic reticulum;>>Apoptosis;>>Apoptosis - multiple species;>>Necroptosis;>>Wnt signaling pathway;>>Osteoclast differentiation;>>Focal adhesion;>>Tight junction;>>Toll-like receptor signaling pathway;>>NOD-like receptor signaling pathway;>>RIG-I-like receptor signaling pathway;>>C-type lectin receptor signaling pathway;>>IL-17 signaling pathway;>>Th1 and Th2 cell differentiation;>>Th17 cell differentiation;>>T cell receptor signaling pathway;>>Fc epsilon RI signaling pathway;>>TNF signaling pathway;>>Neurotrophin signaling pathway;>>Retrograde endocannabinoid signaling;>>Dopaminergic synapse;>>Inflammatory mediator regulation of TRP channels;>>Insulin signaling pathway;>>GnRH signaling pathway;>>Progesterone-mediated oocyte maturation;>>Pr
Gene Name :	MAPK10
Protein Name :	Mitogen-activated protein kinase 10
Human Gene Id :	5602
Human Swiss Prot No :	P53779
Mouse Swiss Prot No :	Q61831
Immunogen :	Purified recombinant fragment of human JNK3 (aa28-233) expressed in E. Coli.
Specificity :	JNK3 Monoclonal Antibody detects endogenous levels of JNK3 protein.
Formulation :	Liquid in PBS containing 50% glycerol, 0.5% BSA and 0.02% sodium azide.

Source :	Monoclonal, Mouse
Dilution :	WB 1:500 - 1:2000. IF 1:200 - 1:1000. ELISA: 1:10000. Not yet tested in other applications.
Purification :	Affinity purification
Storage Stability :	-15 °C to -25 °C/1 year(Do not lower than -25 °C)
Molecularweight :	53kD
Cell Pathway :	Toll_Like; Stem cell pathway; Insulin Receptor; MAPK_ERK_Growth;MAPK_G_Protein; ErbB/HER; SAPK_JNK; WNT;WNT-T CELL;β-Catenin; Cell Growth
P References :	<ol style="list-style-type: none">1. Blood. 2002 Oct 1;100(7):2546-53.2. J Leukoc Biol. 2003 May;73(5):682.3. Exp Neurol. 2004 Aug;188(2):246.
Background :	<p>The protein encoded by this gene is a member of the MAP kinase family. MAP kinases act as integration points for multiple biochemical signals and are involved in a wide variety of cellular processes, such as proliferation, differentiation, transcription regulation and development. This kinase is specifically expressed in a subset of neurons in the nervous system and is activated by threonine and tyrosine phosphorylation. Targeted deletion of this gene in mice suggests that it may have a role in stress-induced neuronal apoptosis. Alternatively spliced transcript variants encoding different isoforms have been described for this gene. A recent study provided evidence for translational readthrough in this gene and expression of an additional C-terminally extended isoform via the use of an alternative in-frame translation termination codon. [provided by RefSeq, Dec 2015],</p>
Function :	<p>alternative products:A similar low level of binding to substrates is observed for isoform alpha-1 and isoform alpha-2. However, there is no correlation between binding and phosphorylation, which is achieved about at the same efficiency by all isoforms,catalytic activity:ATP + a protein = ADP + a phosphoprotein.,caution:The sequence shown here is derived from an Ensembl automatic analysis pipeline and should be considered as preliminary data.,cofactor:Magnesium.,disease:A chromosomal rearrangement involving MAPK10 is a cause of epileptic encephalopathy Lennox-Gastaut type [MIM:606369]. Translocation t(Y;4)(q11.2;q21) which causes MAPK10 truncation. Epileptic encephalopathies of the Lennox-Gastaut group are childhood epileptic disorders characterized by severe psychomotor delay and seizures.,domain:The TXY motif contains the threonine and tyrosine residues whose phosphorylation activates t</p>
Subcellular Location :	Cytoplasm . Membrane ; Lipid-anchor . Nucleus . Mitochondrion . Palmitoylation regulates MAPK10 trafficking to cytoskeleton. Recruited to the mitochondria in

the presence of SARM1 (By similarity). .

Expression : Specific to a subset of neurons in the nervous system. Present in the hippocampus and areas, cerebellum, striatum, brain stem, and weakly in the spinal cord. Very weak expression in testis and kidney.

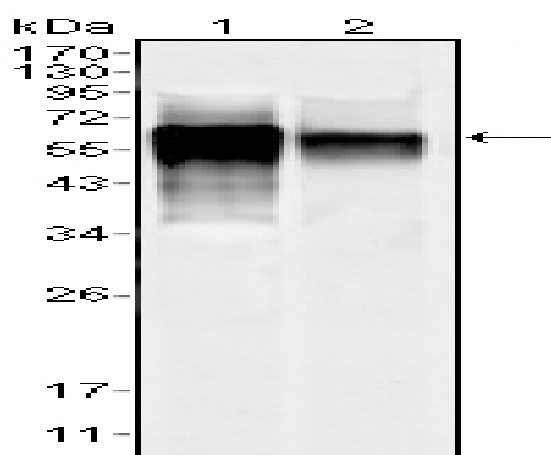
Sort : 8807

No4 : 1

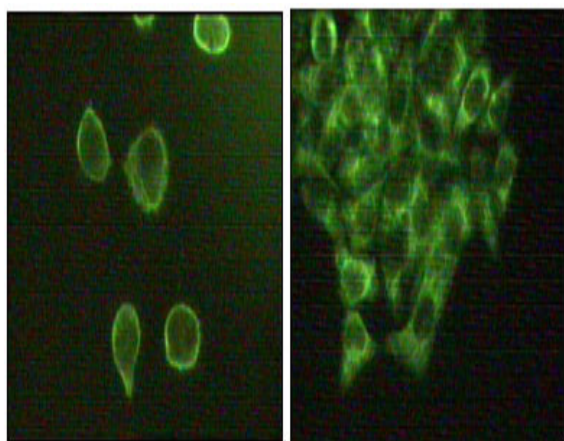
Host : Mouse

Modifications : Unmodified

Products Images



Western Blot analysis using JNK3 Monoclonal Antibody against NIH/3T3 (1) and SKN-SH (2) cell lysate.



Immunofluorescence staining of methanol-fixed A431 (left) and Hela (right) cells showing cytoplasmic and membrane localization using JNK3 Monoclonal Antibody.