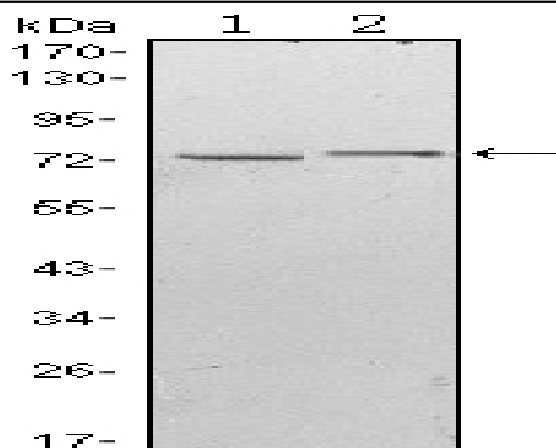


KLHL13 Monoclonal Antibody

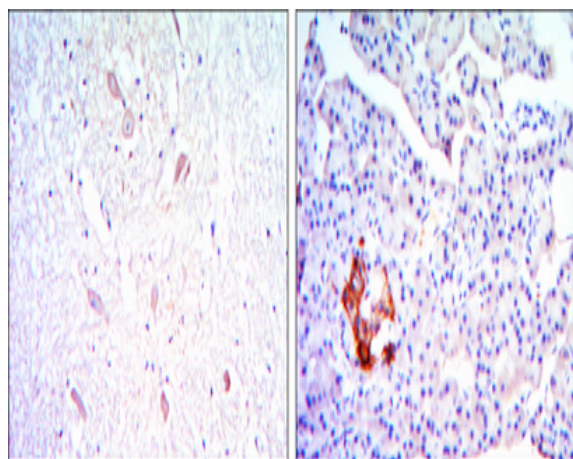
Catalog No :	YM0401
Reactivity :	Human
Applications :	WB;IHC;IF;FCM;ELISA
Target :	KLHL13
Fields :	>>Ubiquitin mediated proteolysis
Gene Name :	KLHL13
Protein Name :	Kelch-like protein 13
Human Gene Id :	90293
Human Swiss Prot No :	Q9P2N7
Mouse Swiss Prot No :	Q80TF4
Immunogen :	Purified recombinant fragment of human KLHL13 expressed in E. Coli.
Specificity :	KLHL13 Monoclonal Antibody detects endogenous levels of KLHL13 protein.
Formulation :	Liquid in PBS containing 50% glycerol, 0.5% BSA and 0.02% sodium azide.
Source :	Monoclonal, Mouse
Dilution :	WB 1:500 - 1:2000. IHC 1:200 - 1:1000. IF 1:200 - 1:1000. Flow cytometry: 1:200 - 1:400. ELISA: 1:10000. Not yet tested in other applications.
Purification :	Affinity purification
Storage Stability :	-15°C to -25°C/1 year(Do not lower than -25°C)
Molecularweight :	74kD

Cell Pathway :	Ubiquitin mediated proteolysis;
P References :	<ol style="list-style-type: none">1. DNA Res. 2000 Feb 28;7(1):65-73.2. Genome Res. 2004 Sep;14(9):1711-8.3. Cell. 2009 Jul 23;138(2):389-403.
Background :	This gene encodes a BTB and kelch domain containing protein and belongs to the kelch repeat domain containing superfamily of proteins. The encoded protein functions as an adaptor protein that complexes with Cullin 3 and other proteins to form the Cullin 3-based E3 ubiquitin-protein ligase complex. This complex is necessary for proper chromosome segregation and completion of cytokinesis. Alternate splicing results in multiple transcript variants. [provided by RefSeq, Mar 2010],
Function :	function:Substrate-specific adapter for a CUL3-based E3 ubiquitin-protein ligase complex. Within this complex, controls the dynamic behavior of AURKB on mitotic chromosomes and thereby coordinates faithful mitotic progression and completion of cytokinesis.,pathway:Protein modification; protein ubiquitination.,similarity:Contains 1 BACK (BTB/Kelch associated) domain.,similarity:Contains 1 BTB (POZ) domain.,similarity:Contains 6 Kelch repeats.,subunit:Forms a complex with CUL3 and KLHL9. Interacts with AURKB. Interacts with CUL3.,
Subcellular Location :	midbody,Cul3-RING ubiquitin ligase complex,
Expression :	Brain,Testis,Thalamus,Whole embryo,
Sort :	8959
No4 :	1
Host :	Mouse
Modifications :	Unmodified

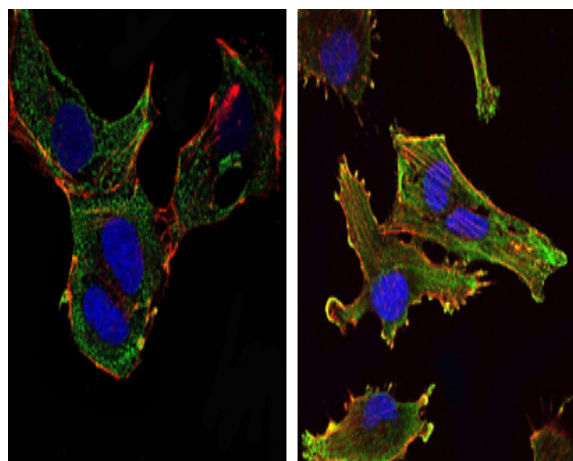
Products Images



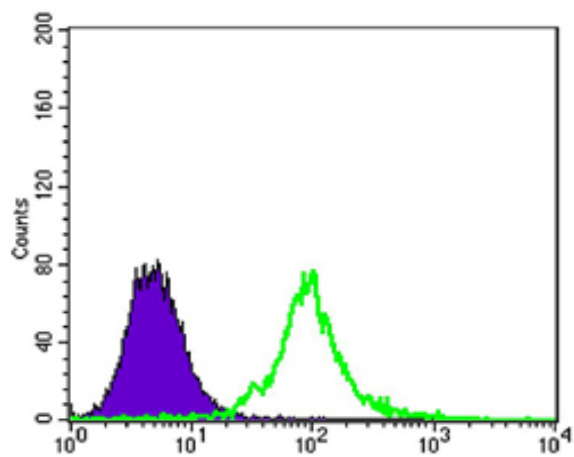
Western Blot analysis using KLHL13 Monoclonal Antibody against HeLa (1) and MCF-7 (2) cell lysate.



Immunohistochemistry analysis of paraffin-embedded brain tissues (left) and pancreas tissues (right) with DAB staining using KLHL13 Monoclonal Antibody.



Immunofluorescence analysis of NTERA-2 cells (left) and U251 (right) cells using KLHL13 Monoclonal Antibody (green). Blue: DRAQ5 fluorescent DNA dye. Red: Actin filaments have been labeled with Alexa Fluor-555 phalloidin.



Flow cytometric analysis of 3T3/L1 cells using KLHL13 Monoclonal Antibody (green) and negative control (purple).