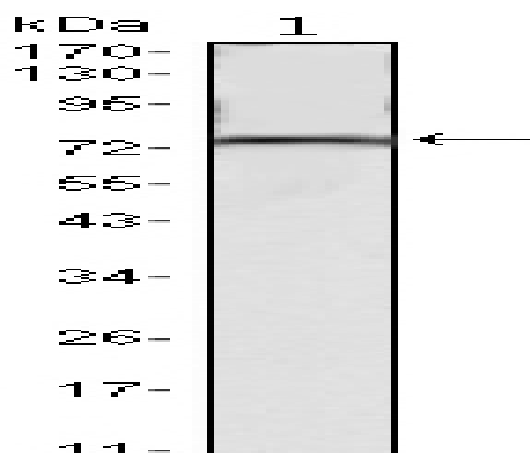


KLHL22 Monoclonal Antibody

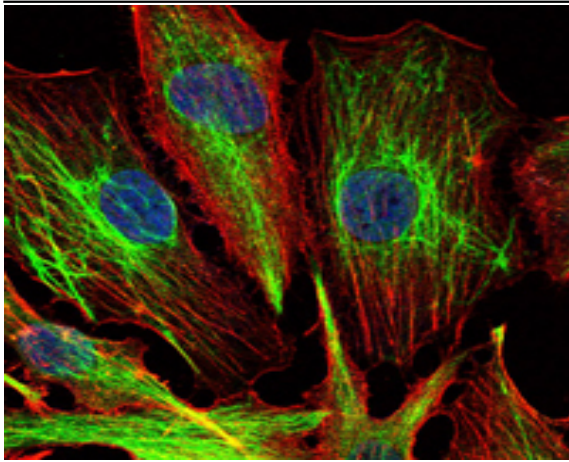
Catalog No :	YM0403
Reactivity :	Human
Applications :	WB;IF;ELISA
Target :	KLHL22
Gene Name :	KLHL22
Protein Name :	Kelch-like protein 22
Human Gene Id :	84861
Human Swiss Prot No :	Q53GT1
Mouse Swiss Prot No :	Q99JN2
Immunogen :	Purified recombinant fragment of human KLHL22 expressed in E. Coli.
Specificity :	KLHL22 Monoclonal Antibody detects endogenous levels of KLHL22 protein.
Formulation :	Liquid in PBS containing 50% glycerol, 0.5% BSA and 0.02% sodium azide.
Source :	Monoclonal, Mouse
Dilution :	WB 1:500 - 1:2000. IF 1:200 - 1:1000. ELISA: 1:10000. Not yet tested in other applications.
Purification :	Affinity purification
Storage Stability :	-15°C to -25°C/1 year(Do not lower than -25°C)
Molecularweight :	72kD
P References :	1. Gene. 1994 Jan 28;138(1-2):171-4. 2. Nat Genet. 2004 Jan;36(1):40-5. 3. Cell. 2009 Jul 23;138(2):389-403.

Background :	similarity:Contains 1 BTB (POZ) domain.,similarity:Contains 6 Kelch repeats.,
Function :	similarity:Contains 1 BTB (POZ) domain.,similarity:Contains 6 Kelch repeats.,
Subcellular Location :	Cytoplasm, cytosol . Cytoplasm, cytoskeleton, microtubule organizing center, centrosome . Cytoplasm, cytoskeleton, spindle . Nucleus . Lysosome . Mainly cytoplasmic in prophase and prometaphase. Associates with the mitotic spindle as the cells reach chromosome bi-orientation. Localizes to the centrosomes shortly before cells enter anaphase After anaphase onset, predominantly associates with the polar microtubules connecting the 2 opposing centrosomes and gradually diffuses into the cytoplasm during telophase (PubMed:23455478). Localizes to the nucleus upon amino acid starvation (PubMed:29769719). Relocalizes to the cytosol and associates with lysosomes when amino acids are available (PubMed:29769719). .
Expression :	Embryo,Kidney,Liver,
Sort :	8962
No4 :	1
Host :	Mouse
Modifications :	Unmodified

Products Images



Western Blot analysis using KLHL22 Monoclonal Antibody against mouse brain tissues lysate.



Immunofluorescence analysis of U251 cells using KLHL22 Monoclonal Antibody (green). Blue: DRAQ5 fluorescent DNA dye. Red: Actin filaments have been labeled with Alexa Fluor-555 phalloidin.