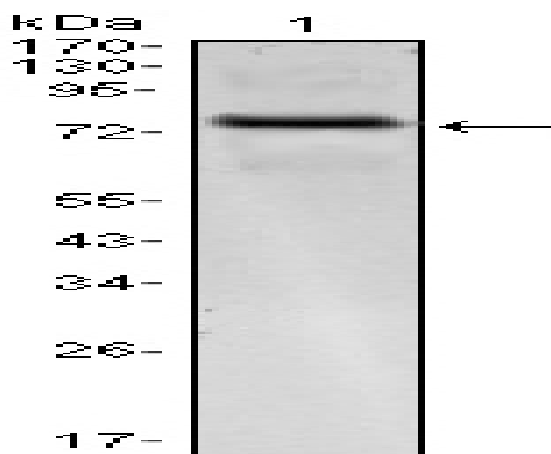


KLHL25 Monoclonal Antibody

Catalog No :	YM0404
Reactivity :	Human
Applications :	WB;ELISA
Target :	KLHL25
Gene Name :	KLHL25
Protein Name :	Ectoderm-neural cortex protein 2
Human Gene Id :	64410
Human Swiss Prot No :	Q9H0H3
Mouse Swiss Prot No :	Q8R2P1
Immunogen :	Purified recombinant fragment of human KLHL25 expressed in E. Coli.
Specificity :	KLHL25 Monoclonal Antibody detects endogenous levels of KLHL25 protein.
Formulation :	Liquid in PBS containing 50% glycerol, 0.5% BSA and 0.02% sodium azide.
Source :	Monoclonal, Mouse
Dilution :	WB 1:500 - 1:2000. ELISA: 1:10000. Not yet tested in other applications.
Purification :	Affinity purification
Storage Stability :	-15°C to -25°C/1 year(Do not lower than -25°C)
Molecularweight :	66kD
P References :	1. BMC Med Genet. 2007 Sep 19;8 Suppl 1:S13. 2. Genome Res. 2004 Oct;14(10B):2136-44.

Background :	<u>similarity:Contains 1 BTB (POZ) domain.,similarity:Contains 6 Kelch repeats.,</u>
Function :	<u>similarity:Contains 1 BTB (POZ) domain.,similarity:Contains 6 Kelch repeats.,</u>
Subcellular Location :	<u>cytoplasm,Cul3-RING ubiquitin ligase complex,</u>
Expression :	<u>Brain,Testis,</u>
Sort :	<u>8963</u>
No4 :	<u>1</u>
Host :	<u>Mouse</u>
Modifications :	<u>Unmodified</u>

Products Images



Western Blot analysis using KLHL25 Monoclonal Antibody against KLHL25-hlgGfc transfected HEK293 cell.