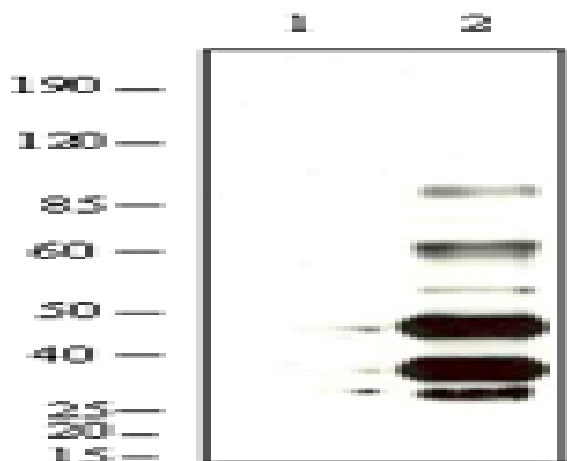


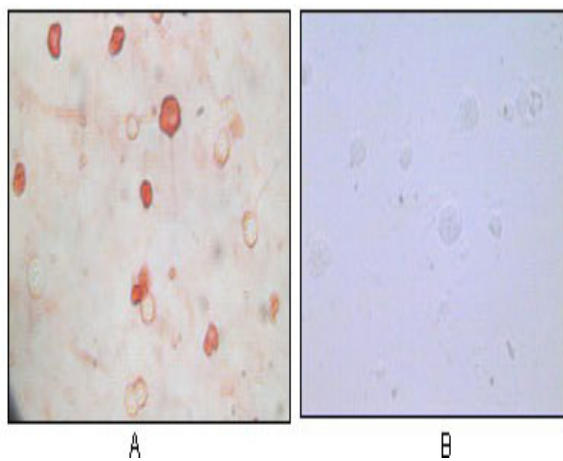
KSHV K8α Monoclonal Antibody

Catalog No :	YM0405
Reactivity :	KsheepV
Applications :	WB;ICC;ELISA
Target :	KSHV K8α
Human Gene Id :	4.96146e+006
Immunogen :	Purified recombinant fragment of KSHV K8α expressed in E. Coli.
Specificity :	KSHV K8α Monoclonal Antibody detects KSHV K8α protein.
Formulation :	Liquid in PBS containing 50% glycerol, 0.5% BSA and 0.02% sodium azide.
Source :	Monoclonal, Mouse
Dilution :	WB 1:500 - 1:2000. Immunocytochemistry: 1:200 - 1:1000. ELISA: 1:10000. Not yet tested in other applications.
Purification :	Affinity purification
Storage Stability :	-15°C to -25°C/1 year(Do not lower than -25°C)
P References :	1. James J et al. Proc. Natl. Acad. Sci Vol. 1996. 93, pp. 14862-14867.
Sort :	9004
No4 :	1
Host :	Mouse
Modifications :	Unmodified

Products Images



Western Blot analysis using KSHV K8 α Monoclonal Antibody against BCBL-1 (1) and TPA induced BCBL-1 (2) cell lysate.



Immunocytochemistry analysis of TPA induced BCBL-1 cells (A) and uninduced BCBL-1 cells (B) using KSHV K8 α Monoclonal Antibody with AEC staining.