

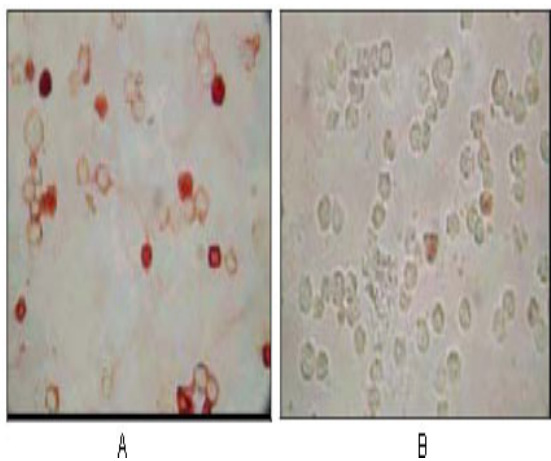
KSHV ORF62 Monoclonal Antibody

Catalog No :	YM0408
Reactivity :	KsheepV
Applications :	WB;ICC;ELISA
Target :	KSHV ORF62
Human Gene Id :	4.96146e+006
Immunogen :	Purified recombinant fragment of human KSHV ORF62 expressed in E. Coli.
Specificity :	KSHV ORF62 Monoclonal Antibody detects KSHV ORF62 protein.
Formulation :	Liquid in PBS containing 50% glycerol, 0.5% BSA and 0.02% sodium azide.
Source :	Monoclonal, Mouse
Dilution :	WB 1:500 - 1:2000. Immunocytochemistry: 1:200 - 1:1000. ELISA: 1:10000. Not yet tested in other applications.
Purification :	Affinity purification
Storage Stability :	-15°C to -25°C/1 year(Do not lower than -25°C)
P References :	1. Chang Y. et al. 1994. Science. 266:1865-1869. 2. Russo J.J. et al. 1996. PNAS. 93: 14862-14867. 3. Wu L. et al. 2000. J VirolOct; 74(20):9646-54.
Sort :	9007
No4 :	1
Host :	Mouse
Modifications :	Unmodified

Products Images



Western Blot analysis using KSHV ORF62 Monoclonal Antibody against KSHV ORF62 recombinant protein.



Immunocytochemistry analysis of TPA induced BCBL-1 cells (A) and uninduced BCBL-1 cells (B) using KSHV ORF62 Monoclonal Antibody with AEC staining.