

MESP1 Monoclonal Antibody

Catalog No :	YM0441
Reactivity :	Human
Applications :	WB;ELISA
Target :	MESP1
Gene Name :	MESP1
Protein Name :	Mesoderm posterior protein 1
Human Gene Id :	55897
Human Swiss Prot No :	Q9BRJ9
Mouse Swiss Prot No :	P97309
Immunogen :	Purified recombinant fragment of human MESP1 expressed in E. Coli.
Specificity :	MESP1 Monoclonal Antibody detects endogenous levels of MESP1 protein.
Formulation :	Liquid in PBS containing 50% glycerol, 0.5% BSA and 0.02% sodium azide.
Source :	Monoclonal, Mouse
Dilution :	WB 1:500 - 1:2000. ELISA: 1:10000. Not yet tested in other applications.
Purification :	Affinity purification
Storage Stability :	-15°C to -25°C/1 year(Do not lower than -25°C)
Molecularweight :	29kD
P References :	1. Proc Natl Acad Sci U S A. 2007 Mar 6;104(10):3859-64. 2. Cell Stem Cell. 2008 Jul 3;3(1):69-84. 3. Circulation. 2008 Jul 29;118(5):507-17.

Background : function:Transcription factor. Plays a role in the epithelialization of somitic mesoderm and in the development of cardiac mesoderm. Defines the rostrocaudal patterning of the somites by participating in distinct Notch pathways.,miscellaneous:The N- and C-terminal domains are separated by a 2-repeat G-Q region.,similarity:Contains 1 basic helix-loop-helix (bHLH) domain.,

Function : function:Transcription factor. Plays a role in the epithelialization of somitic mesoderm and in the development of cardiac mesoderm. Defines the rostrocaudal patterning of the somites by participating in distinct Notch pathways.,miscellaneous:The N- and C-terminal domains are separated by a 2-repeat G-Q region.,similarity:Contains 1 basic helix-loop-helix (bHLH) domain.,

Subcellular Location : Nucleus .

Expression : Lung,

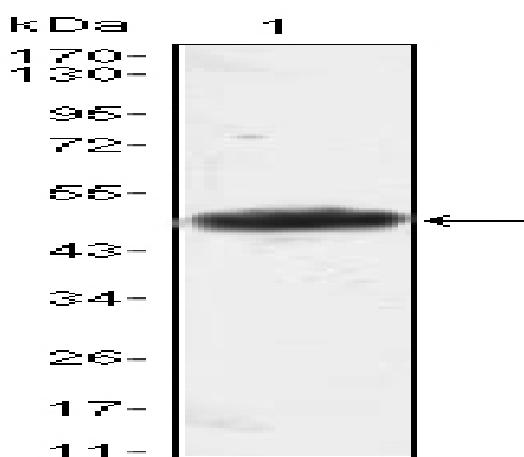
Sort : 9592

No4 : 1

Host : Mouse

Modifications : Unmodified

Products Images



Western Blot analysis using MESP1 Monoclonal Antibody against MESP1-hlgGfc transfected HEK293 cell lysate.