

## Msi1 Monoclonal Antibody

|                              |   |
|------------------------------|---|
| <b>Catalog No :</b>          | YM0451  |
| <b>Reactivity :</b>          | Human   |
| <b>Applications :</b>        | WB;FCM;ELISA  |
| <b>Target :</b>              | Msi1  |
| <b>Fields :</b>              | >>mRNA surveillance pathway   |
| <b>Gene Name :</b>           | MSI1  |
| <b>Protein Name :</b>        | RNA-binding protein Musashi homolog 1   |
| <b>Human Gene Id :</b>       | 4440  |
| <b>Human Swiss Prot No :</b> | O43347  |
| <b>Mouse Swiss Prot No :</b> | Q61474  |
| <b>Immunogen :</b>           | Purified recombinant fragment of human Msi1 expressed in E. Coli.                                       |
| <b>Specificity :</b>         | Msi1 Monoclonal Antibody detects endogenous levels of Msi1 protein.                                     |
| <b>Formulation :</b>         | Liquid in PBS containing 50% glycerol, 0.5% BSA and 0.02% sodium azide.                                 |
| <b>Source :</b>              | Monoclonal, Mouse   |
| <b>Dilution :</b>            | WB 1:500 - 1:2000. Flow cytometry: 1:200 - 1:400. ELISA: 1:10000. Not yet tested in other applications. |
| <b>Purification :</b>        | Affinity purification   |
| <b>Storage Stability :</b>   | -15°C to -25°C/1 year(Do not lower than -25°C)  |
| <b>Molecularweight :</b>     | 39kD  |

**P References :**

1. BMC Cancer. 2008 Apr 18;8:108.
  2. Gastroenterology. 2008 May;134(5):1448-58.
- 

**Background :**

This gene encodes a protein containing two conserved tandem RNA recognition motifs. Similar proteins in other species function as RNA-binding proteins and play central roles in posttranscriptional gene regulation. Expression of this gene has been correlated with the grade of the malignancy and proliferative activity in gliomas and melanomas. A pseudogene for this gene is located on chromosome 11q13. [provided by RefSeq, Jul 2008],

---

**Function :**

domain:The first RNA recognition motif binds more strongly to RNA compared to the second one.,function:RNA binding protein that regulates the expression of target mRNAs at the translation level. Regulates expression of the NOTCH1 antagonist NUMB. Binds RNA containing the sequence 5'-GUUAGUUAGUUAGUU-3' and other sequences containing the pattern 5'-[GA]U(1-3)AGU-3'. May play a role in the proliferation and maintenance of stem cells in the central nervous system.,similarity:Belongs to the Musashi family.,similarity:Contains 2 RRM (RNA recognition motif) domains.,tissue specificity:Detected in fetal kidney, brain, liver and lung, and in adult brain and pancreas. Detected in hepatoma cell lines.,

---

**Subcellular Location :**

Cytoplasm . Nucleus .

---

**Expression :**

Detected in fetal kidney, brain, liver and lung, and in adult brain and pancreas. Detected in hepatoma cell lines.

---

**Sort :**

10285

---

**No4 :**

1

---

**Host :**

Mouse

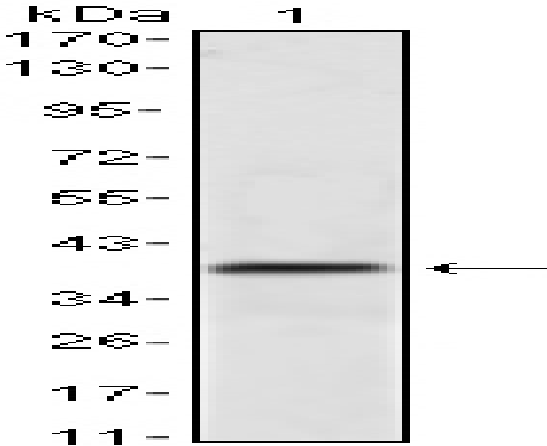
---

**Modifications :**

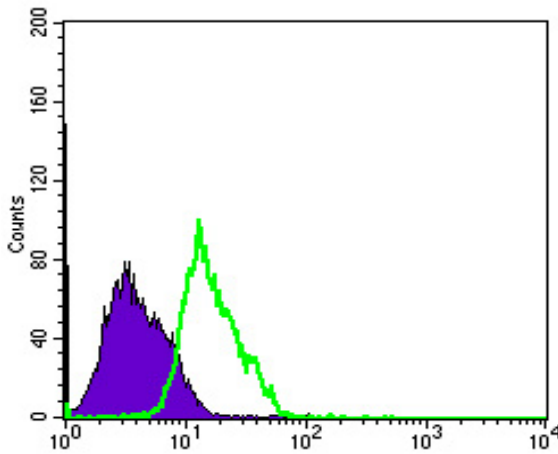
Unmodified

---

## Products Images



Western Blot analysis using Msi1 Monoclonal Antibody against NTERA-2 cell lysate.



Flow cytometric analysis of PC-2 cells using Msi1 Monoclonal Antibody (green) and negative control (purple).

