

MerTK Monoclonal Antibody

Catalog No :	YM0440
Reactivity :	Human
Applications :	WB;ELISA
Target :	MerTK
Gene Name :	MERTK
Protein Name :	Tyrosine-protein kinase Mer
Human Gene Id :	10461
Human Swiss Prot No :	Q12866
Mouse Swiss Prot No :	Q60805
Immunogen :	Purified recombinant fragment of MerTK expressed in E. Coli.
Specificity :	MerTK Monoclonal Antibody detects endogenous levels of MerTK protein.
Formulation :	Liquid in PBS containing 50% glycerol, 0.5% BSA and 0.02% sodium azide.
Source :	Monoclonal, Mouse
Dilution :	WB 1:500 - 1:2000. ELISA: 1:10000. Not yet tested in other applications.
Purification :	Affinity purification
Storage Stability :	-15°C to -25°C/1 year (Do not lower than -25°C)
Molecularweight :	110kD
P References :	<ol style="list-style-type: none"> 1. McGough N. Cummings JH. Proc Nutr Soc.2005, Nov,64(4):434-50. Review. 2. Allouache D. Gawande SR. Tubiana-Hulin M. et al. BMC Cancer. 2005, Nov 29,5:151. 3. Segueineau C. Soudant P. Moal J.

Background :

This gene is a member of the MER/AXL/TYRO3 receptor kinase family and encodes a transmembrane protein with two fibronectin type-III domains, two Ig-like C2-type (immunoglobulin-like) domains, and one tyrosine kinase domain. Mutations in this gene have been associated with disruption of the retinal pigment epithelium (RPE) phagocytosis pathway and onset of autosomal recessive retinitis pigmentosa (RP). [provided by RefSeq, Jul 2008],

Function :

catalytic activity:ATP + a [protein]-L-tyrosine = ADP + a [protein]-L-tyrosine phosphate.,disease:Defects in MERTK are a cause of retinitis pigmentosa (RP) [MIM:268000]. RP that leads to degeneration of retinal photoreceptor cells. Patients typically have night vision blindness and loss of midperipheral visual field. As their condition progresses, they lose their far peripheral visual field and eventually central vision as well.,function:In case of filovirus infection, seems to function as a cell entry factor.,online information:Retina International's Scientific Newsletter,similarity:Belongs to the protein kinase superfamily. Tyr protein kinase family.,similarity:Belongs to the protein kinase superfamily. Tyr protein kinase family. AXL/UFO subfamily.,similarity:Contains 1 protein kinase domain.,similarity:Contains 2 fibronectin type-III domains.,similarity:Contains 2 Ig-like C2-type (imm

Subcellular Location :

Cell membrane ; Single-pass type I membrane protein .

Expression :

Not expressed in normal B- and T-lymphocytes but is expressed in numerous neoplastic B- and T-cell lines. Highly expressed in testis, ovary, prostate, lung, and kidney, with lower expression in spleen, small intestine, colon, and liver.

Tag :

hot

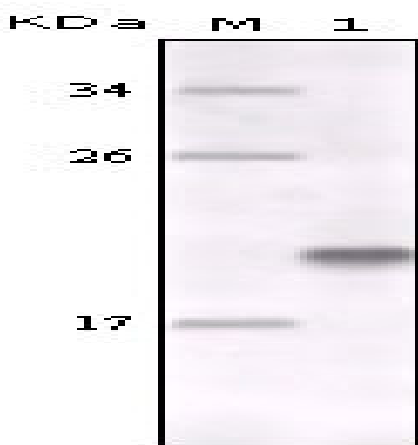
Sort :

9584

No4 :

1

Products Images



Western Blot analysis using MerTK Monoclonal Antibody against full-length MerTK recombinant protein.