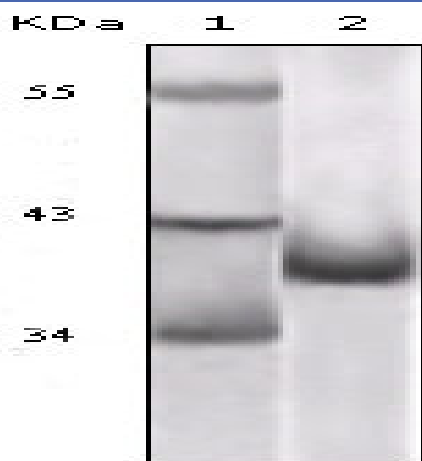


**p14ARF Monoclonal Antibody**

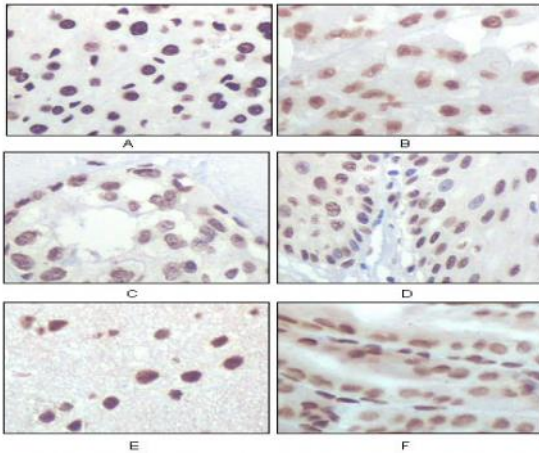
<b>Catalog No :</b>	YM0494
<b>Reactivity :</b>	Human;Mouse;Rat
<b>Applications :</b>	WB;IHC;IF;ELISA
<b>Target :</b>	p14ARF
<b>Gene Name :</b>	CDKN2A
<b>Protein Name :</b>	Cyclin-dependent kinase inhibitor 2A isoform 4
<b>Human Gene Id :</b>	1029
<b>Human Swiss Prot No :</b>	Q8N726
<b>Mouse Gene Id :</b>	12578
<b>Mouse Swiss Prot No :</b>	Q64364
<b>Rat Swiss Prot No :</b>	Q8QZZ9
<b>Immunogen :</b>	Purified recombinant fragment of p16 expressed in E. Coli.
<b>Specificity :</b>	p16 Monoclonal Antibody detects endogenous levels of p16 protein.
<b>Formulation :</b>	Liquid in PBS containing 50% glycerol, 0.5% BSA and 0.02% sodium azide.
<b>Source :</b>	Monoclonal, Mouse
<b>Dilution :</b>	WB 1:500 - 1:2000. IHC 1:200 - 1:1000. ELISA: 1:10000.. IF 1:50-200
<b>Purification :</b>	Affinity purification
<b>Storage Stability :</b>	-15°C to -25°C/1 year(Do not lower than -25°C)
<b>Molecularweight :</b>	14kD

<b>Cell Pathway :</b>	Stem cell pathway; Cell Cycle
<b>P References :</b>	1. Hunter, T. 1993. Cell 75: 839-841. 2. Sherr, C.J. 1993. Cell 73: 1059-1065. 3. El-Deiry, W.S., et al. 1993. Cell 75: 817-825.
<b>Subcellular Location :</b>	Nucleus, nucleolus . Nucleus, nucleoplasm .; [Isoform smARF]: Mitochondrion .
<b>Tag :</b>	orthogonal
<b>Sort :</b>	1
<b>No3 :</b>	ab54210
<b>No4 :</b>	1
<b>Host :</b>	Mouse
<b>Modifications :</b>	Unmodified

## Products Images



Western Blot analysis using p16 Monoclonal Antibody against truncated p16 recombinant protein.



Immunohistochemistry analysis of paraffin-embedded rat liver tissue (A), human brain tumor (B), breast cancer (C), esophageal epithelium tissue (D), mouse brain tissue (E) and stomach tissue (F), showing nuclear localization with DAB staining using p16 Mon