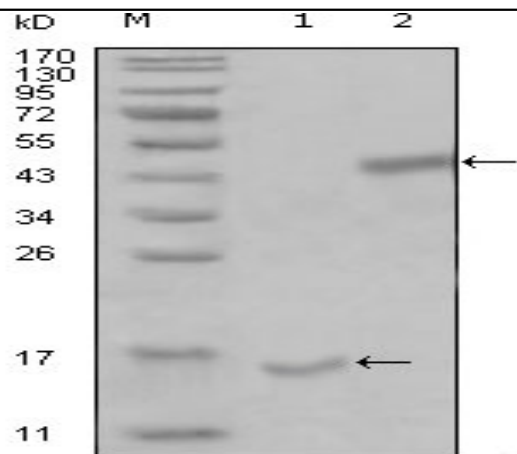


PARL Monoclonal Antibody

Catalog No :	YM0505
Reactivity :	Human
Applications :	WB;ELISA
Target :	PARL
Gene Name :	PARL
Protein Name :	Presenilins-associated rhomboid-like protein mitochondrial
Human Gene Id :	55486
Human Swiss Prot No :	Q9H300
Mouse Swiss Prot No :	Q5XJY4
Immunogen :	Purified recombinant fragment of PARL (aa112-167) expressed in E. Coli.
Specificity :	PARL Monoclonal Antibody detects endogenous levels of PARL protein.
Formulation :	Liquid in PBS containing 50% glycerol, 0.5% BSA and 0.02% sodium azide.
Source :	Monoclonal, Mouse
Dilution :	WB 1:500 - 1:2000. ELISA: 1:10000. Not yet tested in other applications.
Purification :	Affinity purification
Storage Stability :	-15°C to -25°C/1 year(Do not lower than -25°C)
Molecularweight :	42kD
P References :	1. J Alzheimers Dis. 2001 Apr;3(2):181-190. 2. Proc Natl Acad Sci U S A. 2002 Dec 24;99(26):16899-903. 3. Nature. 2003 May 29;423(6939):537-41.

Background :	This gene encodes a member of the rhomboid family of intramembrane serine proteases that is localized to the inner mitochondrial membrane. The encoded protein regulates mitochondrial remodeling and apoptosis through regulated substrate proteolysis. Proteolytic processing of the encoded protein results in the release of a small peptide, P-beta, which may transit to the nucleus. Mutations in this gene may be associated with Parkinson's disease. [provided by RefSeq, May 2016],
Function :	catalytic activity: Cleaves type-1 transmembrane domains using a catalytic dyad composed of serine and histidine that are contributed by different transmembrane domains., function: Required for the control of apoptosis during postnatal growth. Essential for proteolytic processing of an antiapoptotic form of OPA1 which prevents the release of mitochondrial cytochrome c in response to intrinsic apoptotic signals (By similarity). Promotes changes in mitochondria morphology regulated by phosphorylation of P-beta domain., PTM: P-beta is proteolytically processed (beta-cleavage) in a PARL-dependent manner. The cleavage is inhibited when residues Ser-65, Thr-69 and Ser-70 are all phosphorylated., similarity: Belongs to the peptidase S54 family., subcellular location: Translocated into the nucleus by an unknown mechanism., subunit: Interacts with PSEN1 and PSEN2. Binds OPA1.,
Subcellular Location :	Mitochondrion inner membrane ; Multi-pass membrane protein . ; [P-beta]: Nucleus . Translocated into the nucleus by an unknown mechanism (PubMed:17116872). .
Expression :	Fetal liver, Lung,
Sort :	11634
No4 :	1
Host :	Mouse
Modifications :	Unmodified

Products Images



Western Blot analysis using PARL Monoclonal Antibody against truncated Trx-PARL recombinant protein (1) and truncated MBP-PARL(aa112-167) recombinant protein (2).