

**PGA5 Monoclonal Antibody**

<b>Catalog No :</b>	YM0518
<b>Reactivity :</b>	Human
<b>Applications :</b>	WB;IHC;IF;ELISA
<b>Target :</b>	PGA5
<b>Gene Name :</b>	PGA3/PGA4/PGA5
<b>Protein Name :</b>	Pepsin A
<b>Human Gene Id :</b>	5222
<b>Human Swiss Prot No :</b>	P00790
<b>Immunogen :</b>	Purified recombinant fragment of human PGA5 expressed in E. Coli.
<b>Specificity :</b>	PGA5 Monoclonal Antibody detects endogenous levels of PGA5 protein.
<b>Formulation :</b>	Liquid in PBS containing 50% glycerol, 0.5% BSA and 0.02% sodium azide.
<b>Source :</b>	Monoclonal, Mouse
<b>Dilution :</b>	WB 1:500 - 1:2000. IHC 1:200 - 1:1000. ELISA: 1:10000.. IF 1:50-200
<b>Purification :</b>	Affinity purification
<b>Storage Stability :</b>	-15°C to -25°C/1 year(Do not lower than -25°C)
<b>Molecularweight :</b>	42kD
<b>P References :</b>	1. Proc Natl Acad Sci U S A. 2002 Dec 24;99(26):16899-903. 2. Nat Genet. 2004 Jan;36(1):40-5.
<b>Background :</b>	This gene encodes a protein precursor of the digestive enzyme pepsin, a member of the peptidase A1 family of endopeptidases. The encoded precursor is secreted by gastric chief cells and undergoes autocatalytic cleavage in acidic

conditions to form the active enzyme, which functions in the digestion of dietary proteins. This gene is found in a cluster of related genes on chromosome 11, each of which encodes one of multiple pepsinogens. Pepsinogen levels in serum may serve as a biomarker for atrophic gastritis and gastric cancer. [provided by RefSeq, Jul 2015],

**Function :**

catalytic activity:Preferential cleavage: hydrophobic, preferably aromatic, residues in P1 and P1' positions. Cleaves 1-Phe-|-Val-2, 4-Gln-|-His-5, 13-Glu-|-Ala-14, 14-Ala-|-Leu-15, 15-Leu-|-Tyr-16, 16-Tyr-|-Leu-17, 23-Gly-|-Phe-24, 24-Phe-|-Phe-25 and 25-Phe-|-Tyr-26 bonds in the B chain of insulin.,function:Shows particularly broad specificity; although bonds involving phenylalanine and leucine are preferred, many others are also cleaved to some extent.,similarity:Belongs to the peptidase A1 family.,

**Subcellular Location :**

extracellular exosome,multivesicular body lumen,

**Expression :**

Brain,Colon,Kidney,Placenta,Skeletal muscle,

**Sort :**

11860

**No4 :**

1

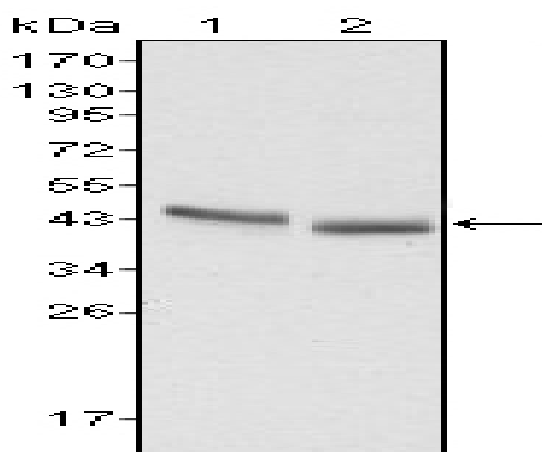
**Host :**

Mouse

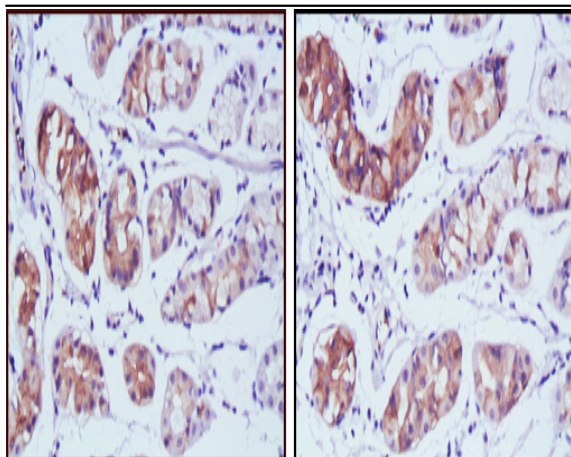
**Modifications :**

Unmodified

## Products Images



Western Blot analysis using PGA5 Monoclonal Antibody against HepG2 (1) and SMMC-7721 (2) cell lysate.



Immunohistochemistry analysis of paraffin-embedded human stomach cancer tissues with DAB staining using PGA5 Monoclonal Antibody.