

Rak Monoclonal Antibody

Catalog No :	YM0551
Reactivity :	Human
Applications :	WB;IHC;IF;ELISA
Target :	Rak
Gene Name :	FRK
Protein Name :	Tyrosine-protein kinase FRK
Human Gene Id :	2444
Human Swiss Prot No :	P42685
Mouse Swiss Prot No :	Q922K9
Immunogen :	Purified recombinant fragment of Rak (aa2-300) expressed in E. Coli.
Specificity :	Rak Monoclonal Antibody detects endogenous levels of Rak protein.
Formulation :	Liquid in PBS containing 50% glycerol, 0.5% BSA and 0.02% sodium azide.
Source :	Monoclonal, Mouse
Dilution :	WB 1:500 - 1:2000. IHC 1:200 - 1:1000. ELISA: 1:10000.. IF 1:50-200
Purification :	Affinity purification
Storage Stability :	-15°C to -25°C/1 year(Do not lower than -25°C)
Molecularweight :	58kD
P References :	1. Int J Cancer. 1993 Jun 19;54(4):571-7. 2. Proc Natl Acad Sci U S A. 2002 Dec 24;99(26):16899-903. 3. Neurosci Lett. 2004 Apr 22;360(1-2):109-11.

Background : The protein encoded by this gene belongs to the TYR family of protein kinases. This tyrosine kinase is a nuclear protein and may function during G1 and S phase of the cell cycle and suppress growth. [provided by RefSeq, Jul 2008],

Function : catalytic activity:ATP + a [protein]-L-tyrosine = ADP + a [protein]-L-tyrosine phosphate.,similarity:Belongs to the protein kinase superfamily. Tyr protein kinase family. SRC subfamily.,similarity:Contains 1 protein kinase domain.,similarity:Contains 1 SH2 domain.,similarity:Contains 1 SH3 domain.,tissue specificity:Restricted to cells lines derived from tissues of lymphoid, brain, breast, colon and bladder origin.,

Subcellular Location : Cytoplasm . Nucleus . Predominantly found in the nucleus, with a small fraction found in the cell periphery.

Expression : Predominantly expressed in epithelial derived cell lines and tissues, especially normal liver, kidney, breast and colon.

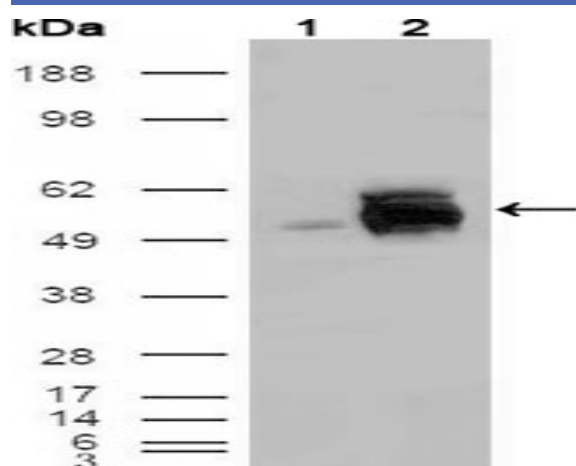
Sort : 13805

No4 : 1

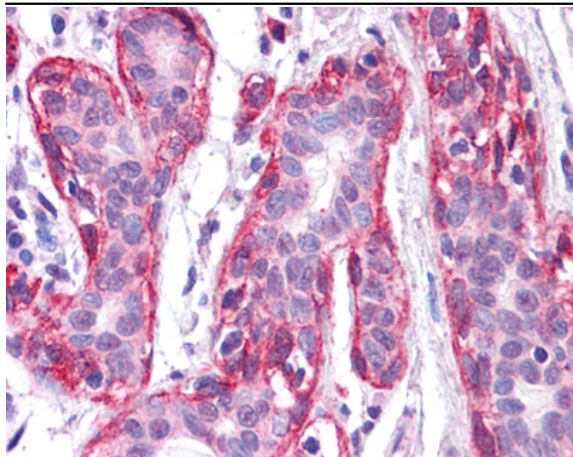
Host : Mouse

Modifications : Unmodified

Products Images



Western Blot analysis using Rak Monoclonal Antibody against HEK293T cells transfected with the pCMV6-ENTRY control (1) and pCMV6-ENTRY Rak cDNA (2).



Immunohistochemistry analysis of paraffin-embedded human Breast tissues with AEC staining using Rak Monoclonal Antibody.