

S-100A10 Monoclonal Antibody

| | |
|------------------------------|---|
| Catalog No : | YM0573 |
| Reactivity : | Human |
| Applications : | WB;IHC;IF;ELISA |
| Target : | S-100A10 |
| Fields : | >>Salmonella infection |
| Gene Name : | S100A10 |
| Protein Name : | Protein S100-A10 |
| Human Gene Id : | 6281 |
| Human Swiss Prot No : | P60903 |
| Mouse Swiss Prot No : | P08207 |
| Immunogen : | Purified recombinant fragment of human S-100A10 expressed in E. Coli. |
| Specificity : | S-100A10 Monoclonal Antibody detects endogenous levels of S-100A10 protein. |
| Formulation : | Liquid in PBS containing 50% glycerol, 0.5% BSA and 0.02% sodium azide. |
| Source : | Monoclonal, Mouse |
| Dilution : | WB 1:500 - 1:2000. IHC 1:200 - 1:1000. IF 1:200 - 1:1000. ELISA: 1:10000. Not yet tested in other applications. |
| Purification : | Affinity purification |
| Storage Stability : | -15°C to -25°C/1 year(Do not lower than -25°C) |
| Molecularweight : | 11kD |

P References :

1. Svenningsson P, Greengard P. *Curr Opin Pharmacol.* 2007;7(1):27-32.
2. Santamaria-Kisiel L, Rintala-Dempsey AC, Shaw GS. *Biochem J.* 2006;396(2):201-14.
3. Rust R, VL, van dJ, Harms G,.et al.

Background :

The protein encoded by this gene is a member of the S100 family of proteins containing 2 EF-hand calcium-binding motifs. S100 proteins are localized in the cytoplasm and/or nucleus of a wide range of cells, and involved in the regulation of a number of cellular processes such as cell cycle progression and differentiation. S100 genes include at least 13 members which are located as a cluster on chromosome 1q21. This protein may function in exocytosis and endocytosis. [provided by RefSeq, Jul 2008],

Function :

function:Because S100A10 induces the dimerization of ANXA2/p36, it may function as a regulator of protein phosphorylation in that the ANXA2 monomer is the preferred target (in vitro) of tyrosine-specific kinase.,miscellaneous:Does not appear to bind calcium. Contains 2 ancestral calcium site related to EF-hand domains that have lost their ability to bind calcium.,similarity:Belongs to the S-100 family.,subunit:Heterotetramer containing 2 light chains of S100A10/p11 and 2 heavy chains of ANXA2/p36. Interacts with SCN10A.,

Subcellular Location :

integral component of membrane,extrinsic component of plasma membrane,membrane raft,extracellular exosome,

Expression :

Brain,Keratinocyte,

Tag :

hot

Sort :

14684

No4 :

1

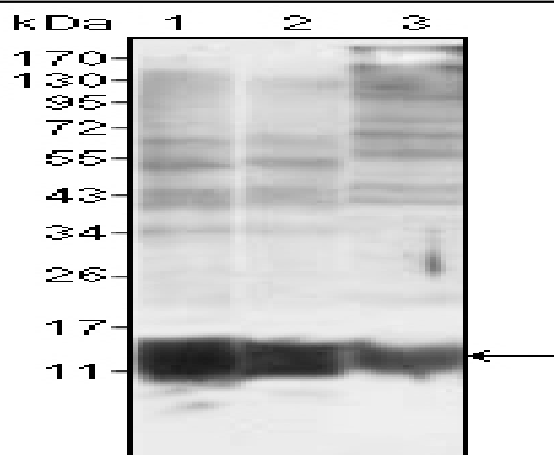
Host :

Mouse

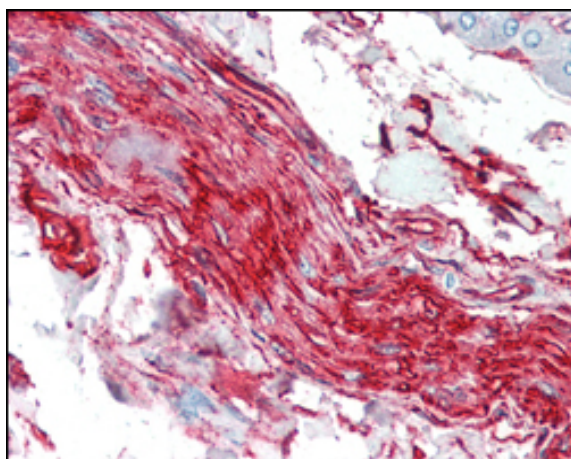
Modifications :

Unmodified

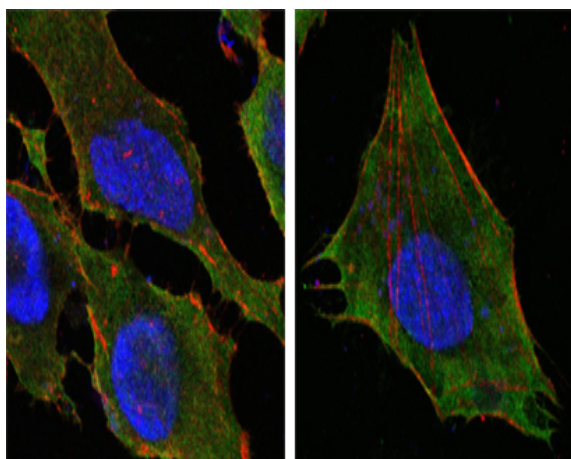
Products Images



Western Blot analysis using S-100A10 Monoclonal Antibody against MCF-7 (1), HepG2 (2) and HeLa (3).



Immunohistochemistry analysis of paraffin-embedded human nerve and ganglion cells with AEC staining using S-100A10 Monoclonal Antibody.



Confocal immunofluorescence analysis of HeLa (left) and L-02 (right) cells using S-100A10 Monoclonal Antibody (green). Red: Actin filaments have been labeled with DY-554 phalloidin. Blue: DRAQ5 fluorescent DNA dye.