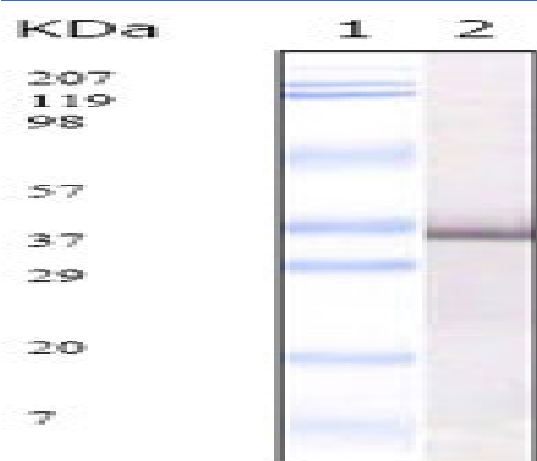


SARS-E2 Monoclonal Antibody

Catalog No :	YM0575
Reactivity :	Human virus
Applications :	WB;ELISA
Target :	SARS-E2
Immunogen :	Purified recombinant fragment of SARS-E2 glycoprotein precursor expressed in E. Coli.
Specificity :	SARS-E2 Monoclonal Antibody detects SARS-E2 protein.
Formulation :	Subclonal supernatant.
Source :	Monoclonal, Mouse
Dilution :	WB 1:500 - 1:2000. ELISA: 1:10000. Not yet tested in other applications.
Purification :	Affinity purification
Concentration :	1 mg/ml
Storage Stability :	-15°C to -25°C/1 year(Do not lower than -25°C)
P References :	1. Fournel S, Cell Immunol 1993 Aug; 150(1):194-204. 2. Marcinkiewicz J Przegl Lek 1998;55(11):611-3.
Sort :	14775
No4 :	1
Host :	Mouse
Modifications :	Unmodified

Products Images



Western Blot analysis using SARS-E2 Monoclonal Antibody against SARS-E2GP3 recombinant protein.