

Smad6 Monoclonal Antibody

Catalog No :	YM0585
Reactivity :	Human
Applications :	WB;ELISA
Target :	Smad6
Fields :	>>TGF-beta signaling pathway
Gene Name :	SMAD6
Protein Name :	Mothers against decapentaplegic homolog 6
Human Gene Id :	4091
Human Swiss Prot No :	O43541
Mouse Swiss Prot No :	O35182
Immunogen :	Purified recombinant fragment of human Smad6 expressed in E. Coli.
Specificity :	Smad6 Monoclonal Antibody detects endogenous levels of Smad6 protein.
Formulation :	Liquid in PBS containing 50% glycerol, 0.5% BSA and 0.02% sodium azide.
Source :	Monoclonal, Mouse
Dilution :	WB 1:500 - 1:2000. ELISA: 1:10000. Not yet tested in other applications.
Purification :	Affinity purification
Storage Stability :	-15°C to -25°C/1 year(Do not lower than -25°C)
Molecularweight :	53kD
Cell Pathway :	TGF-beta;

P References :

1. J Biol Chem. 2006 Feb 10;281(6):3569-76.
2. Nat Immunol. 2006 Oct;7(10):1057-65.
3. J Med Genet. 2009 May;46(5):331-7.

Background : The protein encoded by this gene belongs to the SMAD family of proteins, which are related to *Drosophila* 'mothers against decapentaplegic' (Mad) and *C. elegans* Sma. SMAD proteins are signal transducers and transcriptional modulators that mediate multiple signaling pathways. This protein functions in the negative regulation of BMP and TGF-beta/activin-signalling. Multiple transcript variants have been found for this gene.[provided by RefSeq, Sep 2014],

Function : function:Antagonist of signaling by TGF-beta (transforming growth factor) type 1 receptor superfamily members; has been shown to inhibit selectively BMP (bone morphogenetic proteins) signaling by competing with the co-SMAD SMAD4 for receptor-activated SMAD1. SMAD6 is an inhibitory SMAD (I-SMAD) or antagonistic SMAD. Binds to regulatory elements in target promoter regions.,PTM:Phosphorylated by BMP type 1 receptor kinase and by PRKX.,similarity:Belongs to the dwarfin/SMAD family.,similarity:Contains 1 MH1 (MAD homology 1) domain.,similarity:Contains 1 MH2 (MAD homology 2) domain.,subunit:Interacts with NEDD4L (By similarity). Interacts with RNF111 and AXIN1. Interacts with TGF-beta type I receptor superfamily members, SMAD1, HOXC8 and HOXC9. Interacts with STAMBP and PRKX.,tissue specificity:Ubiquitous in various organs, with higher levels in lung. Isoform B is up-regulated in diseased he

Subcellular Location : Nucleus .

Expression : Ubiquitous in various organs, with higher levels in lung. Isoform B is up-regulated in diseased heart tissue.

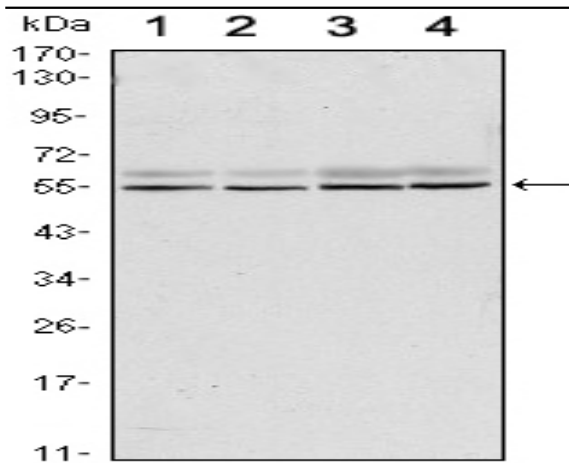
Sort : 16428

No4 : 1

Host : Mouse

Modifications : Unmodified

Products Images



Western Blot analysis using Smad6 Monoclonal Antibody against A431 (1), A431 (2), HeLa (3) and Jurkat (4) cell lysate.