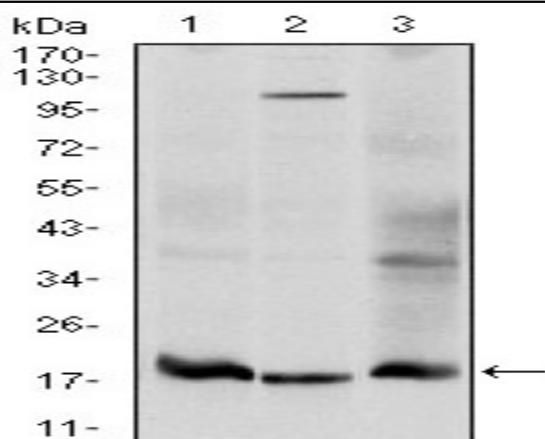


UBC9 Monoclonal Antibody

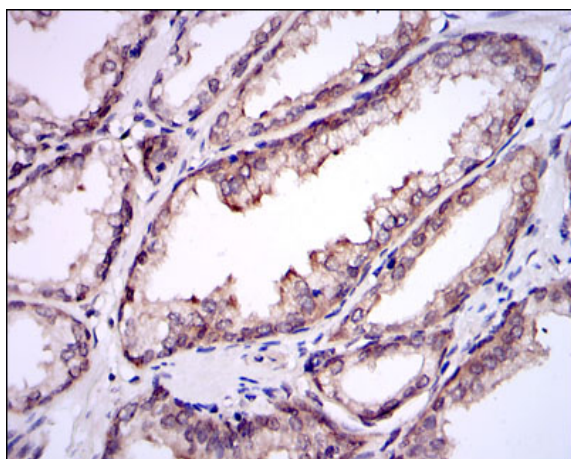
Catalog No :	YM0642
Reactivity :	Human
Applications :	WB;IHC;IF;FCM;ELISA
Target :	UBC9
Fields :	>>Nucleocytoplasmic transport;>>NF-kappa B signaling pathway;>>Ubiquitin mediated proteolysis;>>MicroRNAs in cancer
Gene Name :	UBE2I
Protein Name :	SUMO-conjugating enzyme UBC9
Human Gene Id :	7329
Human Swiss Prot No :	P63279
Mouse Swiss Prot No :	P63280
Immunogen :	Purified recombinant fragment of human UBC9 expressed in E. Coli.
Specificity :	UBC9 Monoclonal Antibody detects endogenous levels of UBC9 protein.
Formulation :	Liquid in PBS containing 50% glycerol, 0.5% BSA and 0.02% sodium azide.
Source :	Monoclonal, Mouse
Dilution :	WB 1:500 - 1:2000. IHC 1:200 - 1:1000. IF 1:200 - 1:1000. Flow cytometry: 1:200 - 1:400. ELISA: 1:10000. Not yet tested in other applications.
Purification :	Affinity purification
Storage Stability :	-15°C to -25°C/1 year(Do not lower than -25°C)
Molecularweight :	18kD

Cell Pathway :	Ubiquitin mediated proteolysis;
P References :	<ol style="list-style-type: none">1. Cell Signal. 2009 Dec;21(12):1935-44.2. Nat Struct Mol Biol. 2009 Sep;16(9):945-52.
Background :	The modification of proteins with ubiquitin is an important cellular mechanism for targeting abnormal or short-lived proteins for degradation. Ubiquitination involves at least three classes of enzymes: ubiquitin-activating enzymes, or E1s, ubiquitin-conjugating enzymes, or E2s, and ubiquitin-protein ligases, or E3s. This gene encodes a member of the E2 ubiquitin-conjugating enzyme family. Four alternatively spliced transcript variants encoding the same protein have been found for this gene. [provided by RefSeq, Jul 2008],
Function :	<p>catalytic activity:ATP + SUMO + protein lysine = AMP + diphosphate + protein N-SUMOyllysine.,function:Accepts the ubiquitin-like proteins SUMO1, SUMO2, SUMO3 and SUMO4 from the UBLE1A-UBLE1B E1 complex and catalyzes their covalent attachment to other proteins with the help of an E3 ligase such as RANBP2 or CBX4. Essential for nuclear architecture and chromosome segregation.,pathway:Protein modification; protein sumoylation.,similarity:Belongs to the ubiquitin-conjugating enzyme family.,subunit:Interacts with HIPK1, HIPK2 and PPM1J (By similarity). Forms a tight complex with RANGAP1 and RANBP2. Interacts with SIAH1 and PARP. Interacts with various transcription factors such as TCF3, TFAP2A, TFAP2B, TFAP2C, AR, ETS1 and SOX4. Interacts with human adenovirus E1A and human herpesvirus 6 IE2. Interacts with RWDD3; the interaction enhances the sumoylation of a number of proteins such as HIF1A</p>
Subcellular Location :	Nucleus . Cytoplasm . Cytoplasm, perinuclear region . Mainly nuclear (By similarity). In spermatocytes, localizes in synaptonemal complexes (PubMed:8610150). Recruited by BCL11A into the nuclear body (By similarity). .
Expression :	Expressed in heart, skeletal muscle, pancreas, kidney, liver, lung, placenta and brain. Also expressed in testis and thymus.
Tag :	hot
Sort :	23852
No4 :	1
Host :	Mouse
Modifications :	Unmodified

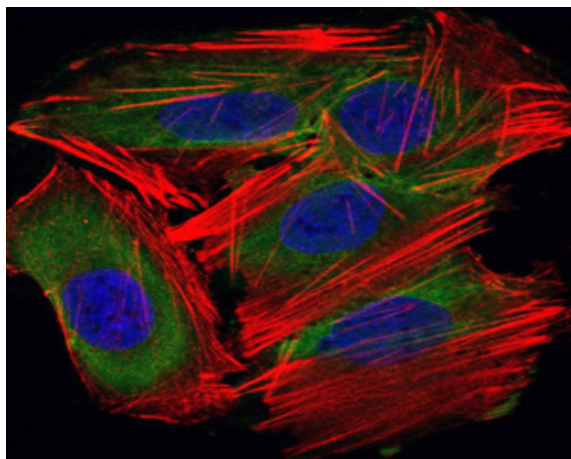
Products Images



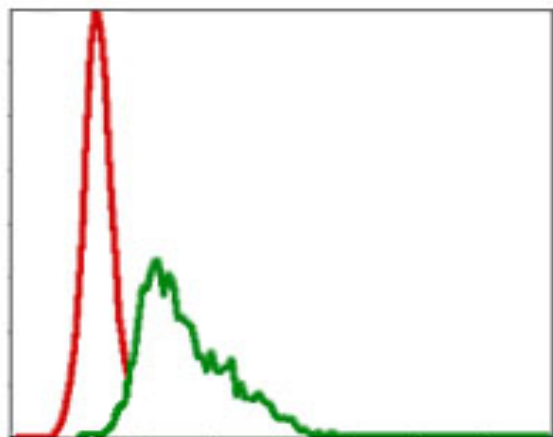
Western Blot analysis using UBC9 Monoclonal Antibody against HeLa (1), HepG2 (2), and Cos7 (3) cell lysate.



Immunohistochemistry analysis of paraffin-embedded prostate tissues with DAB staining using UBC9 Monoclonal Antibody.



Immunofluorescence analysis of HepG2 cells using UBC9 Monoclonal Antibody (green). Blue: DRAQ5 fluorescent DNA dye. Red: Actin filaments have been labeled with Alexa Fluor-555 phalloidin.



Flow cytometric analysis of HepG2 cells using UBC9 Monoclonal Antibody (green) and negative control (red).

