

UBE1L Monoclonal Antibody

Catalog No :	YM0643
Reactivity :	Human
Applications :	WB;ELISA
Target :	UBE1L
Fields :	>>Ubiquitin mediated proteolysis;>>Parkinson disease;>>Pathways of neurodegeneration - multiple diseases
Gene Name :	UBA7
Protein Name :	Ubiquitin-like modifier-activating enzyme 7
Human Gene Id :	7318
Human Swiss Prot No :	P41226
Immunogen :	Purified recombinant fragment of human UBE1L expressed in E. Coli.
Specificity :	UBE1L Monoclonal Antibody detects endogenous levels of UBE1L protein.
Formulation :	Liquid in PBS containing 50% glycerol, 0.5% BSA and 0.02% sodium azide.
Source :	Monoclonal, Mouse
Dilution :	WB 1:500 - 1:2000. ELISA: 1:10000. Not yet tested in other applications.
Purification :	Affinity purification
Storage Stability :	-15°C to -25°C/1 year(Do not lower than -25°C)
Molecularweight :	112kD
Cell Pathway :	Ubiquitin mediated proteolysis;Parkinson's disease;

P References :

1. Cancer Res. 1992 Mar 15;52(6):1536-41
 2. Proc Natl Acad Sci U S A. 1993 Jul 1;90(13):6071-5.
 3. Proc Natl Acad Sci U S A. 2002 Mar 19;99(6):3806-11.
-

Background :

The modification of proteins with ubiquitin is an important cellular mechanism for targeting abnormal or short-lived proteins for degradation. Ubiquitination involves at least three classes of enzymes: ubiquitin-activating enzymes, or E1s, ubiquitin-conjugating enzymes, or E2s, and ubiquitin-protein ligases, or E3s. This gene encodes a member of the E1 ubiquitin-activating enzyme family. The encoded enzyme is a retinoid target that triggers promyelocytic leukemia (PML)/retinoic acid receptor alpha (RARalpha) degradation and apoptosis in acute promyelocytic leukemia, where it is involved in the conjugation of the ubiquitin-like interferon-stimulated gene 15 protein. [provided by RefSeq, Jul 2008],

Function :

function:Activates ubiquitin by first adenylating with ATP its C-terminal glycine residue and thereafter linking this residue to the side chain of a cysteine residue in E1, yielding an ubiquitin-E1 thioester and free AMP.,miscellaneous:There are two active sites within the E1 molecule, allowing it to accommodate two ubiquitin moieties at a time, with a new ubiquitin forming an adenylate intermediate as the previous one is transferred to the thiol site.,pathway:Protein modification; protein ubiquitination.,similarity:Belongs to the ubiquitin-activating E1 family.,subunit:Monomer (By similarity). Binds and is involved in the conjugation of G1P2/ISG15.,tissue specificity:Expressed in a variety of normal and tumor cell types, but is reduced in lung cancer cell lines.,

Subcellular Location :

nucleus,nucleoplasm,cytosol,

Expression :

Expressed in a variety of normal and tumor cell types, but is reduced in lung cancer cell lines.

Sort :

23855

No4 :

1

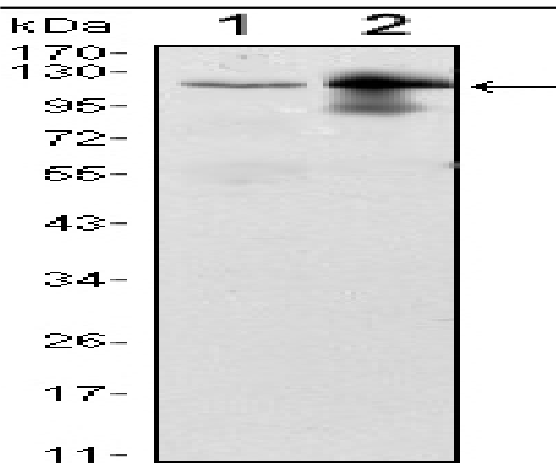
Host :

Mouse

Modifications :

Unmodified

Products Images



Western Blot analysis using UBE1L Monoclonal Antibody against Raji (1) and THP-1 (2) cell lysate.