

CHRDL1 Monoclonal Antibody

Catalog No :	YM1022
Reactivity :	Human;Rat
Applications :	WB
Target :	CHRDL1
Gene Name :	CHRDL1
Protein Name :	Chordin-like protein 1
Human Gene Id :	91851
Human Swiss Prot No :	Q9BU40
Mouse Swiss Prot No :	Q920C1
Rat Gene Id :	363455
Rat Swiss Prot No :	Q76LD0
Immunogen :	Purified recombinant human CHRDL1 protein fragments expressed in E.coli.
Specificity :	CHRDL1 Monoclonal Antibody detects endogenous levels of CHRDL1 protein.
Formulation :	Liquid in PBS containing 50% glycerol, 0.5% BSA and 0.02% sodium azide.
Source :	Monoclonal, Mouse
Dilution :	WB 1:1000 - 1:2000. Not yet tested in other applications.
Purification :	Affinity purification
Concentration :	1 mg/ml
Storage Stability :	-15°C to -25°C/1 year(Do not lower than -25°C)

Molecularweight : 52kD

Background : This gene encodes an antagonist of bone morphogenetic protein 4. The encoded protein may play a role in topographic retinotectal projection and in the regulation of retinal angiogenesis in response to hypoxia. Alternatively spliced transcript variants encoding different isoforms have been described. [provided by RefSeq, Jan 2009],

Function : function:Antagonizes the function of BMP4 by binding to it and preventing its interaction with receptors. Alters the fate commitment of neural stem cells from gliogenesis to neurogenesis. Contributes to neuronal differentiation of neural stem cells in the brain by preventing the adoption of a glial fate. May play a crucial role in dorsoventral axis formation. May play a role in embryonic bone formation (By similarity). May also play an important role in regulating retinal angiogenesis through modulation of BMP4 actions in endothelial cells.,induction:By hypoxia in retinal pericytes.,similarity:Contains 3 VWFC domains.,tissue specificity:Expressed in retinal pericytes.,

Subcellular Location : Secreted .

Expression : Expressed in the developing cornea and in the eye anterior segment in addition to the retina. Differentially expressed in the fetal brain. There is high expression in cerebellum and neocortex. Expressed in retinal pericytes.

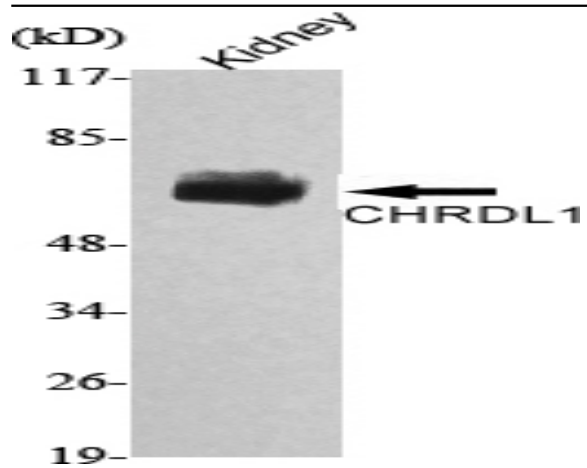
Sort : 3972

No4 : 1

Host : Mouse

Modifications : Unmodified

Products Images



Western Blot analysis using CHRDL1 Monoclonal Antibody against rat kidney lysate.