

## Integrin $\alpha 5$ Monoclonal Antibody

<b>Catalog No :</b>	YM1054
<b>Reactivity :</b>	Human;Mouse;Rat;Bovine
<b>Applications :</b>	WB;FCM
<b>Target :</b>	Integrin $\alpha 5$
<b>Fields :</b>	>>Phagosome;>>PI3K-Akt signaling pathway;>>Focal adhesion;>>ECM-receptor interaction;>>Hematopoietic cell lineage;>>Regulation of actin cytoskeleton;>>Bacterial invasion of epithelial cells;>>Shigellosis;>>Pertussis;>>Yersinia infection;>>Human papillomavirus infection;>>Herpes simplex virus 1 infection;>>Proteoglycans in cancer;>>MicroRNAs in cancer;>>Hypertrophic cardiomyopathy;>>Arrhythmogenic right ventricular cardiomyopathy;>>Dilated cardiomyopathy
<b>Gene Name :</b>	ITGA5
<b>Protein Name :</b>	Integrin alpha-5
<b>Human Gene Id :</b>	3678
<b>Human Swiss Prot No :</b>	P08648
<b>Mouse Gene Id :</b>	16402
<b>Mouse Swiss Prot No :</b>	P11688
<b>Immunogen :</b>	Purified recombinant human Integrin $\alpha 5$ (N-terminus) protein fragments expressed in E.coli.
<b>Specificity :</b>	Integrin $\alpha 5$ Monoclonal Antibody detects endogenous levels of Integrin $\alpha 5$ protein.
<b>Formulation :</b>	Liquid in PBS containing 50% glycerol, 0.5% BSA and 0.02% sodium azide.
<b>Source :</b>	Monoclonal, Mouse

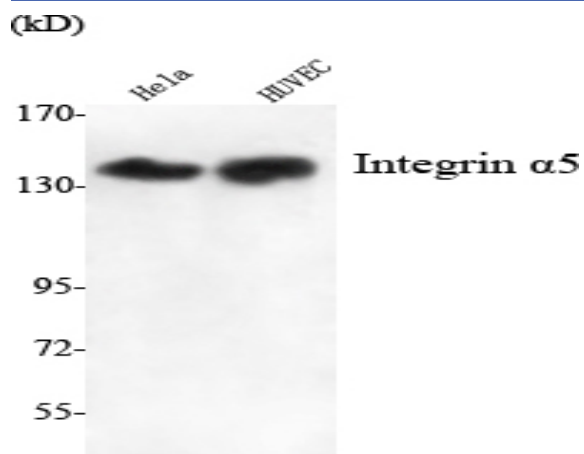
---

<b>Dilution :</b>	WB 1:1000 - 1:2000. Flow cytometry: 1:100 - 1:200. Not yet tested in other applications.
<b>Purification :</b>	Affinity purification
<b>Concentration :</b>	1 mg/ml
<b>Storage Stability :</b>	-15°C to -25°C/1 year(Do not lower than -25°C)
<b>Molecularweight :</b>	115kD
<b>Cell Pathway :</b>	Focal adhesion;ECM-receptor interaction;Hematopoietic cell lineage;Regulates Actin and Cytoskeleton;Hypertrophic cardiomyopathy (HCM);Arrhythmogenic right ventricular cardiomyopathy (ARVC);Dilated car
<b>Background :</b>	integrin subunit alpha 5(ITGA5) Homo sapiens The product of this gene belongs to the integrin alpha chain family. Integrins are heterodimeric integral membrane proteins composed of an alpha subunit and a beta subunit that function in cell surface adhesion and signaling. The encoded preproprotein is proteolytically processed to generate light and heavy chains that comprise the alpha 5 subunit. This subunit associates with the beta 1 subunit to form a fibronectin receptor. This integrin may promote tumor invasion, and higher expression of this gene may be correlated with shorter survival time in lung cancer patients. Note that the integrin alpha 5 and integrin alpha V subunits are encoded by distinct genes. [provided by RefSeq, Oct 2015],
<b>Function :</b>	function:Integrin alpha-5/beta-1 is a receptor for fibronectin and fibrinogen. It recognizes the sequence R-G-D in its ligands. In case of HIV-1 infection, the interaction with extracellular viral Tat protein seems to enhance angiogenesis in Kaposi's sarcoma lesions.,similarity:Belongs to the integrin alpha chain family.,similarity:Contains 7 FG-GAP repeats.,subunit:Heterodimer of an alpha and a beta subunit. The alpha subunit is composed of an heavy and a light chain linked by a disulfide bond. Alpha-5 associates with beta-1. Interacts with HPS5 and NISCH. Interacts with HIV-1 Tat. Interacts with RAB21.,
<b>Subcellular Location :</b>	Membrane; Single-pass type I membrane protein. Cell junction, focal adhesion . Cell surface .
<b>Expression :</b>	Liver,Placenta,
<b>Tag :</b>	hot
<b>Sort :</b>	8603
<b>No4 :</b>	1

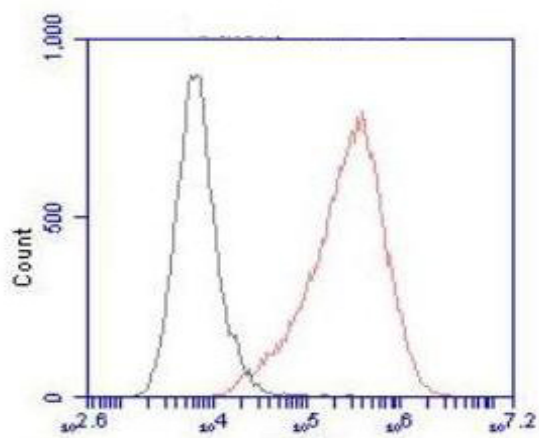
---

**Host :** Mouse**Modifications :** Unmodified

## Products Images



Western Blot analysis using Integrin  $\alpha 5$  Monoclonal Antibody against HeLa, HUVEC cell lysate.



Flow cytometric analysis of HeLa cells stained with Integrin  $\alpha 5$  Monoclonal Antibody (red), followed by FITC-conjugated goat anti-mouse IgG. Black line histogram represents the isotype control, normal mouse IgG.