

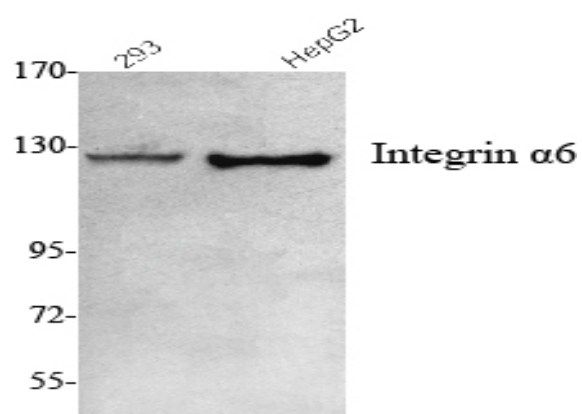
Integrin $\alpha 6$ Monoclonal Antibody

Catalog No :	YM1055
Reactivity :	Human;Mouse;Rat;Bovine;Dog;Pig
Applications :	WB;IF
Target :	Integrin $\alpha 6$
Fields :	>>PI3K-Akt signaling pathway;>>Focal adhesion;>>ECM-receptor interaction;>>Cell adhesion molecules;>>Hematopoietic cell lineage;>>Regulation of actin cytoskeleton;>>Toxoplasmosis;>>Human papillomavirus infection;>>Pathways in cancer;>>Small cell lung cancer;>>Hypertrophic cardiomyopathy;>>Arrhythmogenic right ventricular cardiomyopathy;>>Dilated cardiomyopathy
Gene Name :	ITGA6
Protein Name :	Integrin alpha-6
Human Gene Id :	3655
Human Swiss Prot No :	P23229
Mouse Swiss Prot No :	Q61739
Immunogen :	Purified recombinant human Integrin $\alpha 6$ (N-terminus) protein fragments expressed in E.coli.
Specificity :	Integrin $\alpha 6$ Monoclonal Antibody detects endogenous levels of Integrin $\alpha 6$ protein.
Formulation :	Liquid in PBS containing 50% glycerol, 0.5% BSA and 0.02% sodium azide.
Source :	Monoclonal, Mouse
Dilution :	WB 1:1000 - 1:2000. IF 1:100 - 1:500. Not yet tested in other applications.
Purification :	Affinity purification

Concentration :	1 mg/ml
Storage Stability :	-15°C to -25°C/1 year(Do not lower than -25°C)
Molecularweight :	127kD
Cell Pathway :	Focal adhesion;ECM-receptor interaction;Cell adhesion molecules (CAMs);Hematopoietic cell lineage;Regulates Actin and Cytoskeleton;Pathways in cancer;Small cell lung cancer;Hypertrophic cardiomyopathy
Background :	<p>integrin subunit alpha 6(ITGA6) Homo sapiens The gene encodes a member of the integrin alpha chain family of proteins. Integrins are heterodimeric integral membrane proteins composed of an alpha chain and a beta chain that function in cell surface adhesion and signaling. The encoded preproprotein is proteolytically processed to generate light and heavy chains that comprise the alpha 6 subunit. This subunit may associate with a beta 1 or beta 4 subunit to form an integrin that interacts with extracellular matrix proteins including members of the laminin family. The alpha 6 beta 4 integrin may promote tumorigenesis, while the alpha 6 beta 1 integrin may negatively regulate erbB2/HER2 signaling. Alternative splicing results in multiple transcript variants. [provided by RefSeq, Oct 2015],</p>
Function :	<p>alternative products:Additional isoforms seem to exist. There is a combination of at least four alternatively spliced domains, two extracellular (X1 and X2) and two cytoplasmic (A and B). So far detected are isoform Alpha-6X1A, isoform Alpha-6X1B and isoform Alpha-6X1X2A (minor). Experimental confirmation may be lacking for some isoforms,disease:Defects in ITGA6 are a cause of epidermolysis bullosa with pyloric atresia (EB-PA) [MIM:226730]; also known as aplasia cutis congenita with gastrointestinal atresia. EB-PA is an autosomal recessive disease characterized by mucocutaneous fragility and gastrointestinal atresia, which most commonly affects the pylorus.,function:Integrin alpha-6/beta-1 is a receptor for laminin on platelets. Integrin alpha-6/beta-4 is a receptor for laminin in epithelial cells and it plays a critical structural role in the hemidesmosome.,PTM:Isoforms containing segme</p>
Subcellular Location :	Cell membrane ; Single-pass type I membrane protein . Cell membrane ; Lipid-anchor .
Expression :	<p>Integrin alpha-6/beta-4 is predominantly expressed by epithelia. Isoforms containing segment X1 are ubiquitously expressed. Isoforms containing segment X1X2 are expressed in heart, kidney, placenta, colon, duodenum, myoblasts and myotubes, and in a limited number of cell lines; they are always coexpressed with the ubiquitous isoform containing segment X1. In some tissues (e.g. Salivary gland), isoforms containing cytoplasmic segment A and isoforms containing segment B are detected while in others, only isoforms containing one cytoplasmic segment are found (segment A in epidermis and segment B in kidney). Processed integrin alpha-6: Expressed at low levels in normal prostate tissue with elevated levels in prostate cancer tissue (at protein level) (PubMed:15023541).</p>

Sort : 8605**No4 :** 1

Products Images

(kD)

Western Blot analysis using Integrin $\alpha 6$ Monoclonal Antibody against 293, HepG2 cell lysate.