

## PPX Monoclonal Antibody

<b>Catalog No :</b>	YM1083
<b>Reactivity :</b>	Human;Mouse;Rat;Bovine;Dog;Zebrafish
<b>Applications :</b>	WB;IHC;IF
<b>Target :</b>	PPX
<b>Fields :</b>	>>Glucagon signaling pathway
<b>Gene Name :</b>	PPP4C
<b>Protein Name :</b>	Serine/threonine-protein phosphatase 4 catalytic subunit
<b>Human Gene Id :</b>	5531
<b>Human Swiss Prot No :</b>	P60510
<b>Mouse Gene Id :</b>	56420
<b>Mouse Swiss Prot No :</b>	P97470
<b>Rat Gene Id :</b>	171366
<b>Rat Swiss Prot No :</b>	Q5BJ92
<b>Immunogen :</b>	Purified recombinant human PPX protein fragments expressed in E.coli.
<b>Specificity :</b>	PPX Monoclonal Antibody detects endogenous levels of PPX protein.
<b>Formulation :</b>	Liquid in PBS containing 50% glycerol, 0.5% BSA and 0.02% sodium azide.
<b>Source :</b>	Monoclonal, Mouse
<b>Dilution :</b>	WB 1:1000 - 1:2000. IHC 1:500 - 1:1000. IF 1:100 - 1:500. Not yet tested in other applications.

**Purification :** Affinity purification

---

**Concentration :** 1 mg/ml

---

**Storage Stability :** -15°C to -25°C/1 year(Do not lower than -25°C)

---

**Molecularweight :** 35kD

---

**Background :** catalytic activity:A phosphoprotein + H(2)O = a protein + phosphate.,cofactor:Binds 1 iron ion per subunit.,cofactor:Binds 1 manganese ion per subunit.,function:Protein phosphatase that is involved in many processes such as microtubule organization at centrosomes, maturation of spliceosomal snRNPs, apoptosis, tumor necrosis factor (TNF)-alpha signaling, activation of c-Jun N-terminal kinase MAPK8, regulation of histone acetylation, DNA damage checkpoint signaling, NF-kappa-B activation and cell migration. The PPP4C-PPP4R1 PP4 complex may play a role in dephosphorylation and regulation of HDAC3. The PPP4C-PPP4R2-PPP4R3A PP4 complex specifically dephosphorylates H2AFX phosphorylated on Ser-140 (gamma-H2AFX) generated during DNA replication and required for DNA DSB repair. Dephosphorylates NDEL1 at CDC2/Cdk1 phosphorylation sites and negatively regulates CDC2/Cdk1 activity in interphase.,similarity:Belongs to the PPP phosphatase family.,similarity:Belongs to the PPP phosphatase family. PP-4 (PP-X) subfamily.,subunit:Serine/threonine-protein phosphatase 4 (PP4) occurs in different assemblies of the catalytic and one or more regulatory subunits. Component of the PP4 complexes PPP4C-PPP4R1, PPP4C-PPP4R2, PPP4C-PPP4R2-PPP4R3A, PPP4C-PPP4R2-PPP4R3B and PPP4C-PPP4R4. The PPP4C-PPP4R2 complex appears to be a tetramer composed of 2 molecules of PPP4C and 2 molecules of PPP4R2. Interacts with REL, NFKB1/p50 and RELA. Interacts with SMN1 AND GEMIN4. Interacts with IRS4 (phosphorylated). Interacts with SMEK1/PPP4R3A; the interaction requires PP4R2. Interacts with HDAC3.,

---

**Function :** catalytic activity:A phosphoprotein + H(2)O = a protein + phosphate.,cofactor:Binds 1 iron ion per subunit.,cofactor:Binds 1 manganese ion per subunit.,function:Protein phosphatase that is involved in many processes such as microtubule organization at centrosomes, maturation of spliceosomal snRNPs, apoptosis, tumor necrosis factor (TNF)-alpha signaling, activation of c-Jun N-terminal kinase MAPK8, regulation of histone acetylation, DNA damage checkpoint signaling, NF-kappa-B activation and cell migration. The PPP4C-PPP4R1 PP4 complex may play a role in dephosphorylation and regulation of HDAC3. The PPP4C-PPP4R2-PPP4R3A PP4 complex specifically dephosphorylates H2AFX phosphorylated on Ser-140 (gamma-H2AFX) generated during DNA replication and required for DNA DSB repair. Dephosphorylates NDEL1 at CDC2/Cdk1 phosphorylation sites and negatively regulates CDC2/Cdk1 activity in interphase.,si

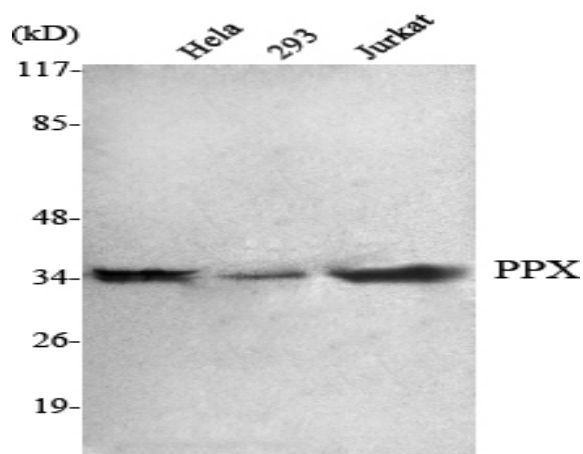
---

**Subcellular Location :** Cytoplasm. Nucleus. Cytoplasm, cytoskeleton, microtubule organizing center, centrosome.

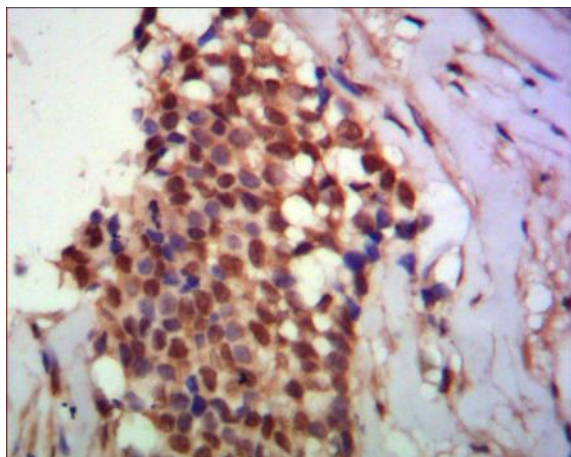
---

<b>Expression :</b>	Placenta,
<b>Sort :</b>	12967
<b>No4 :</b>	1
<b>Host :</b>	Mouse
<b>Modifications :</b>	Unmodified

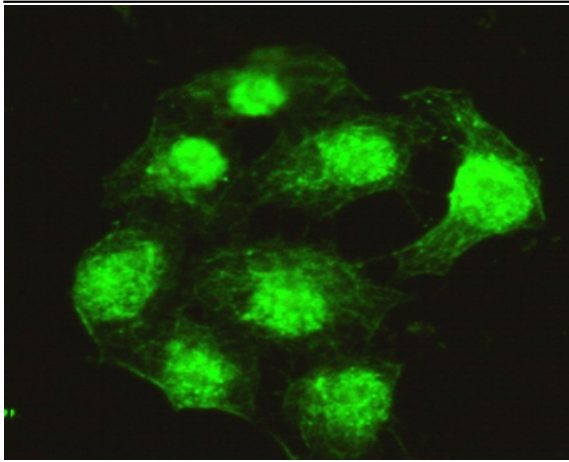
## Products Images



Western Blot analysis using PPX Monoclonal Antibody against HeLa, 293, Jurkat cell lysate.



Immunohistochemistry analysis of paraffin-embedded human breast cancer using PPX Monoclonal Antibody.



Immunofluorescence analysis of HeLa cells using PPX Monoclonal Antibody.