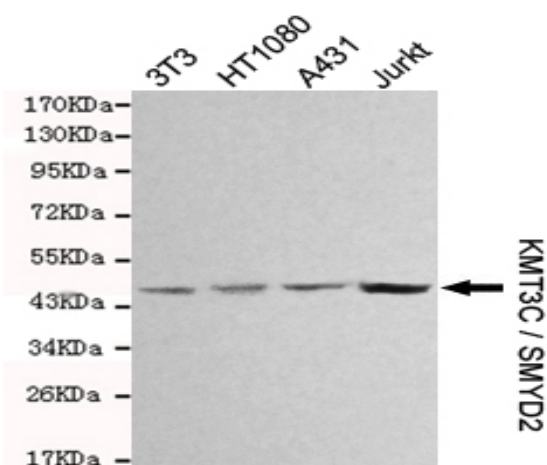


KMT3C/SMYD2 mouse mAb

| | |
|------------------------------|--|
| Catalog No : | YM1214 |
| Reactivity : | Human;Mouse |
| Applications : | WB |
| Target : | SMYD2 |
| Fields : | >>Lysine degradation;>>Metabolic pathways |
| Gene Name : | smyd2 |
| Human Gene Id : | 56950 |
| Human Swiss Prot No : | Q9NRG4 |
| Mouse Swiss Prot No : | Q8R5A0 |
| Immunogen : | Purified recombinant human KMT3C / SMYD2 protein fragments expressed in E.coli. |
| Specificity : | This antibody detects endogenous levels of KMT3C / SMYD2 and does not cross-react with related proteins. |
| Formulation : | Liquid in PBS containing 50% glycerol, 0.5% BSA and 0.02% sodium azide. |
| Source : | Monoclonal, Mouse |
| Dilution : | wb 1:1000 |
| Purification : | The antibody was affinity-purified from mouse ascites by affinity-chromatography using epitope-specific immunogen. |
| Concentration : | 1 mg/ml |
| Storage Stability : | -15°C to -25°C/1 year(Do not lower than -25°C) |
| Observed Band : | 50kD |

| | |
|-------------------------------|--|
| Background : | SET and MYND domain containing 2(SMYD2) Homo sapiens SET domain-containing proteins, such as SMYD2, catalyze lysine methylation (Brown et al., 2006 [PubMed 16805913]).[supplied by OMIM, Nov 2008], |
| Function : | similarity:Contains 1 MYND-type zinc finger.,similarity:Contains 1 SET domain., |
| Subcellular Location : | Cytoplasm, cytosol . Nucleus . |
| Expression : | Brain,Colon,Liver cancer,Testis, |
| Sort : | 8971 |
| No4 : | 1 |
| Host : | Mouse |
| Modifications : | Unmodified |

Products Images



Western blot detection of KMT3C / SMYD2 in 3T3,HT1080,A431 and Jurkat cell lysates and using KMT3C / SMYD2 mouse mAb (1:1000 diluted). Predicted band size: 50KDa.Observed band size: 50KDa.