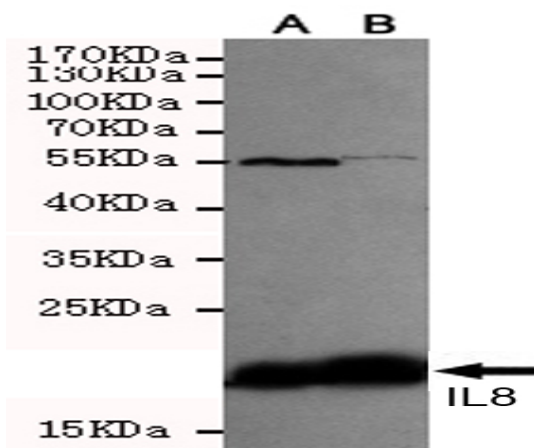


## IL-8 mouse mAb

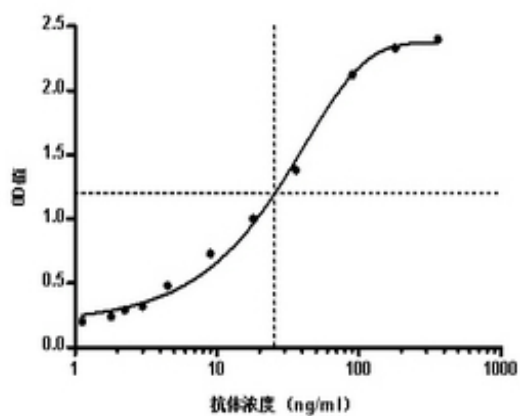
<b>Catalog No :</b>	YM1225
<b>Reactivity :</b>	Human
<b>Applications :</b>	WB;ELISA
<b>Target :</b>	IL-8
<b>Fields :</b>	>>Cytokine-cytokine receptor interaction;>>Viral protein interaction with cytokine and cytokine receptor;>>Chemokine signaling pathway;>>NF-kappa B signaling pathway;>>Phospholipase D signaling pathway;>>Cellular senescence;>>Toll-like receptor signaling pathway;>>NOD-like receptor signaling pathway;>>RIG-I-like receptor signaling pathway;>>IL-17 signaling pathway;>>Non-alcoholic fatty liver disease;>>AGE-RAGE signaling pathway in diabetic complications;>>Alcoholic liver disease;>>Epithelial cell signaling in Helicobacter pylori infection;>>Pathogenic Escherichia coli infection;>>Shigellosis;>>Salmonella infection;>>Pertussis;>>Legionellosis;>>Yersinia infection;>>Chagas disease;>>Malaria;>>Amoebiasis;>>Hepatitis B;>>Human cytomegalovirus infection;>>Influenza A;>>Kaposi sarcoma-associated herpesvirus infection;>>Coronavirus disease - COVID-19;>>Pathways in cancer;>>Transcriptional misregulation in cancer;>>Bladder cancer;>>Rheumatoid arthritis;>>Lipid and atherosclerosis
<b>Gene Name :</b>	IL8 CXCL8
<b>Human Gene Id :</b>	3576
<b>Human Swiss Prot No :</b>	P10145
<b>Immunogen :</b>	Purified recombinant human IL8 protein fragments expressed in E.coli.
<b>Specificity :</b>	This antibody detects over-expressed and recombinant levels of IL8 and does not cross-react with related proteins.
<b>Formulation :</b>	Liquid in PBS containing 50% glycerol, 0.5% BSA and 0.02% sodium azide.
<b>Source :</b>	Monoclonal, Mouse
<b>Dilution :</b>	wb 1:500

<b>Purification :</b>	The antibody was affinity-purified from mouse ascites by affinity-chromatography using epitope-specific immunogen.
<b>Concentration :</b>	1 mg/ml
<b>Storage Stability :</b>	-15°C to -25°C/1 year(Do not lower than -25°C)
<b>Observed Band :</b>	20kD
<b>Cell Pathway :</b>	Cytokine-cytokine receptor interaction;Chemokine;Toll_Like;NOD-like receptor;RIG-I-like receptor;Epithelial cell signaling in Helicobacter pylori infection;Pathways in cancer;Bladder cancer;
<b>Background :</b>	The protein encoded by this gene is a member of the CXC chemokine family. This chemokine is one of the major mediators of the inflammatory response. This chemokine is secreted by several cell types. It functions as a chemoattractant, and is also a potent angiogenic factor. This gene is believed to play a role in the pathogenesis of bronchiolitis, a common respiratory tract disease caused by viral infection. This gene and other ten members of the CXC chemokine gene family form a chemokine gene cluster in a region mapped to chromosome 4q. [provided by RefSeq, Jul 2008],
<b>Function :</b>	function:IL-8 is a chemotactic factor that attracts neutrophils, basophils, and T-cells, but not monocytes. It is also involved in neutrophil activation. It is released from several cell types in response to an inflammatory stimulus. IL-8(6-77) has a 5-10-fold higher activity on neutrophil activation, IL-8(5-77) has increased activity on neutrophil activation and IL-8(7-77) has a higher affinity to receptors CXCR1 and CXCR2 as compared to IL-8(1-77), respectively.,online information:Interleukin-8 entry,PTM:Several N-terminal processed forms are produced by proteolytic cleavage after secretion from at least peripheral blood monocytes, leukocytes and endothelial cells. In general, IL-8(1-77) is referred to as interleukin-8. IL-8(6-77) is the most prominent form.,similarity:Belongs to the intercrine alpha (chemokine CxC) family.,subunit:Homodimer.,
<b>Subcellular Location :</b>	Secreted.
<b>Expression :</b>	Chronic myeloid leukemia cell,Kidney,Lung,Lung carcinoma,Neutrophil,Periphe
<b>Tag :</b>	overexpression
<b>Sort :</b>	8531
<b>No4 :</b>	1
<b>Host :</b>	Mouse

## Products Images



Western blot detection of IL8 in CHO-K1 transfected by IL8-PDGFR fusion protein cell lysate using IL8 mouse mAb (1:500(A)-1:1000(B) diluted).



Indirect ELISA assay for anti-IL8 mouse mAb. Antigen coating concentration: 8ug/ml.